



Winners of European Cup-Winners' Cup 1971

Chelsea



Football League Division One—Season 1971/72

Saturday, 25th March
WEST HAM UNITED

Kick-off 3 p.m.



OFFICIAL PROGRAMME 5P

Chelsea

Colours:

Shirts: Royal Blue.

Shorts: Royal Blue with White Seam.

Stockings: White.



West Ham

Colours:

Shirts: Claret with Blue Sleeves, Claret and Blue Facings.

Shorts: White.

Stockings: White.

PETER
BONETTI

— **1** —

PADDY
MULLIGAN

— **2** —

JOHN
BOYLE

— **3** —

JOHN
HOLLINS (*Captain*)

— **4** —

JOHN
DEMPSEY

— **5** —

DAVID
WEBB

— **6** —

CHARLIE
COOKE

— **7** —

CHRIS
GARLAND

— **8** —

PETER
OSGOOD

— **9** —

ALAN
HUDSON

— **10** —

PETER
HOUSEMAN

— **11** —

BOBBY
FERGUSON

JOHN
McDOWELL

FRANK
LAMPARD

BILLY
BONDS

TOMMY
TAYLOR

BOBBY
MOORE (*Captain*)

PAT
HOLLAND

CLYDE
BEST

GEOFF
HURST

TREVOR
BROOKING

BRYAN
ROBSON

— **Substitute** —

Linesman (Red Flag):

Mr. T. R. Mason
(Oswestry)

Referee:

Mr. BOB MATTHEWSON
(Manchester)

Linesman (Orange Flag):

Mr. R. S. Lewis
(Bournemouth)



THE CHELSEA FOOTBALL & ATHLETIC CO. LTD.

(Founded 1905)

Registered Address

STAMFORD BRIDGE GROUNDS,
FULHAM ROAD, LONDON SW6
(Tel: 01-385 5545)

PRESIDENT

The Right Hon. Earl Cadogan, M.C.,
D.L.

BOARD OF DIRECTORS

J. B. Mears (Chairman)
Viscount Chelsea (Vice-Chairman)
L. J. Mears
G. M. Thomson
R. S. Attenborough, C.B.E.

Secretary

A. W. Green

Team Manager

D. Sexton

Trainer

H. Medhurst

Hon. Medical Officers

Dr. W. C. Marshall
Dr. J. Vyse

COLOURS

Shirts: Royal Blue. Shorts: Royal Blue
with White Seam.
Stockings: White.

HONOURS

Football League Champions 1955
F.A. Charity Shield Winners 1955
Football League Cup Winners 1965
F.A. Cup Winners 1970
European Cup-Winners' Cup 1971
Won promotion to Div. 1 1907, 1912,
1930, 1963
F.A. Youth Cup Winners 1960, 1961

The Talk of Stamford Bridge

MARCH has been a month we would like to forget because so far it has to be remembered for the wrong reasons. The present sequence, starting with the last match of last month, of four defeats and a draw represents our worst patch in three seasons, though there were signs of better things when we visited the League leaders Manchester City last Saturday.

Today we welcome our good friends and keen London rivals West Ham United, who are managed, of course, by our former player Ron Greenwood. Then, on Wednesday night, another old favourite at Stamford Bridge, John Harris, brings his team—Sheffield United—to provide the opposition here.

After recent results, a really big effort is called for in the season's remaining League fixtures if we are to achieve a final position in the table good enough to earn qualification for Europe in next season's U.E.F.A. Cup. Make no mistake, European football has a prominent place in our future planning. Indeed, it is an essential part of the fixture-list of every top-class club, as we know from our own previous "big nights" in Europe and as we were reminded this week by events across London at Tottenham and Highbury. With eleven games to go, there is still plenty to play for.

* * *

New date: Our League match at Southampton, washed out on February 12, has been re-arranged for Tuesday, April 18 (7.30 p.m.). A new date has still to be fixed for the home match with Stoke City, originally postponed on League Cup Final day and again put off on Wednesday this week because of Stoke's F.A. Cup sixth round replay against Manchester United.

* * *

So unlucky Ian: Ian Hutchinson cannot have many challengers for the unwanted title of "football's unluckiest player of the season." The day after we went to press with our last programme, against Liverpool—in which we stated that "his broken left leg is now doing well"—Hutch was running in training when he felt a pain. X-ray revealed a slight crack, a stress

fracture, in the same area as the previous injury, and the leg was put in plaster again for some six weeks. So, instead of hoping to finish this season back in action, Ian must now plan his comeback for the start of next season. It was last April that he had a cartilage operation on the right knee, on recovery from which he broke the left leg in two places in a Reserve try-out at Swindon last August. We know supporters join us in wishing Ian complete recovery through the close-season, and we look forward to him starting 1972-73 fully fit again and ready to make up for all the football he has missed this winter.

* * *

Chelsea's captaincy: A change in the Club captaincy was made last week-end, when Ron Harris was left out of the side for the first time this season. Eddie McCreadie is the new Club captain, and John Hollins took over the team captaincy against Manchester City last Saturday. In leading us to F.A. Cup and European Cup-Winners' Cup successes, Ron Harris has made his mark as no previous Chelsea captain did and, announcing the change, Manager Dave Sexton said: "Ron has been one of the rocks in our triumphs of the past two seasons, even at times when playing out of position. We have leaned on him for a long time, but he has lost a bit of form lately, and I feel it will be for the best to leave him out of the side tomorrow and also to relieve him of the responsibilities of captaincy. John Hollins takes over the team captaincy and Eddie McCreadie is our new Club captain. Eddie is injured just now, but if and when he gets back into the first team he will take over the captaincy on the field as well. I have made these changes in the best interests of the Club and also, I think, to help Ron get back his own form."

* * *

Up from Somerset: Chelsea supporter Bill Hanlon, who comes from Taunton, is having a day out here today thanks to his ten-year-old son Kevin. Young Kevin beat all the soccer experts in his home town in a *Rothmans* football quiz, and the prize was a trip for two to a big match of their choice—which explains why Kevin and his Dad are here this afternoon. Says Bill: "I entered him for the competition, when I saw it announced in the local paper, to

ALAN HUDSON FAN CLUB

JUST starting—the Alan Hudson Fan Club! To join, send 25p postal order and stamped, addressed envelope.

In return you will receive a signed photograph, membership card and a regular newsletter from Alan.

Please write to: Alan Hudson Fan Club, No. 1 Curzonfield House, 42 Curzon Street, London, W1Y 7RS.

find out just how much he knew about his favourite sport. He'll know still more after watching today's game."

* * *

Player of the Year: Four weeks today Chelsea's "Player of the Year" will be announced and he will receive the award at the Supporters' Club dance at Fulham Town Hall. That's on the night of the home match against Newcastle (April 22), and tickets—members 45p, non-members 60p—can be obtained now from Mr. J. Coombes, 103 Pulborough Road, London, S.W.18, or from the Supporters' Club Shop at 547 Fulham Road, S.W.6. Cheques and postal orders should be made payable to Chelsea Supporters' Club.

* * *

Chelsea's chosen: An ankle injury ruled Alan Hudson out of the Football League XI against the Scottish League at Middlesbrough last midweek, but both Alan and Steve Kember were in the England Under-23 squad for the match against East Germany on the Bristol City ground on Wednesday night.

* * *

Into the Final: Chelsea Juniors beat Millwall here 4-1 on Monday in the semi-final of the London F.A. Youth Cup. Opponents, date and venue for the Final are now awaited.

* * *

Important note to Season-ticket holders: Please advise our Ticket Office by Thursday next (March 30)—unless you have already done so—of any change of address since your present Season-ticket book was issued.

TABLES, APPEARANCES & GOALSCORERS

FOOTBALL LEAGUE—DIVISION 1

	P	W	D	L	F	A	W	D	L	F	A	Pts
Man. City	34	14	3	1	42	12	6	6	4	24	24	49
Derby	32	12	4	0	36	9	6	4	6	20	20	44
Leeds	31	13	4	0	40	8	5	3	6	12	14	43
Liverpool	33	13	3	1	39	14	4	5	7	10	13	42
Wolves	33	9	7	0	32	16	6	3	8	23	29	40
Tottenham	32	12	3	2	35	10	2	7	6	13	23	38
Man. Utd.	32	10	2	4	28	18	5	6	5	26	27	38
Sheff. Utd.	33	8	7	2	36	21	6	3	7	18	26	38
Arsenal	31	10	1	3	25	9	6	4	7	19	22	37
CHELSEA	31	8	6	2	29	15	4	4	7	11	17	34
Newcastle	33	8	4	4	25	15	4	4	9	15	29	32
W. HAM	34	8	5	4	26	15	2	5	10	13	24	30
Everton	35	8	6	4	25	14	0	7	10	6	26	29
Ipswich	33	5	7	5	14	15	2	8	6	16	29	29
Stoke	30	6	6	3	23	17	3	4	8	10	21	28
Leicester	32	6	4	6	14	11	3	5	8	18	29	27
West Brom.	33	5	4	7	16	20	5	3	9	16	24	27
Coventry	32	5	9	2	17	15	1	5	10	15	35	26
Crystal P.	33	3	5	7	19	24	4	5	9	12	27	24
S'th'mpt'n	32	6	3	6	26	24	3	2	12	16	45	23
Huddersf'd	33	4	5	7	10	16	2	4	11	13	30	21
Nottm. F.	34	4	3	10	19	26	1	4	12	18	42	17

Figures in brackets in opposite column represent appearances as substitutes.

FOOTBALL COMBINATION

	P	W	D	L	F	A	Pts
Tottenham Hotspur	31	23	6	2	68	12	52
Oxford United	35	17	12	6	51	35	46
Ipswich Town	35	17	9	9	75	43	43
Queen's Park Rangers	32	15	10	7	65	34	40
Leicester City	33	16	8	9	63	44	40
Crystal Palace	32	15	8	9	50	43	38
Bristol City	33	14	7	12	49	40	35
Arsenal	34	13	7	14	52	44	33
West Ham United	31	12	8	11	52	43	32
Southampton	31	12	7	12	34	34	31
Swindon Town	31	11	9	11	54	57	31
Bristol Rovers	32	11	8	13	36	49	30
CHELSEA	34	10	9	15	37	43	29
Swansea City	31	10	9	12	34	51	29
Cardiff City	32	11	6	15	42	40	28
Birmingham City	29	10	7	12	30	40	27
Fulham	32	9	9	14	32	45	27
Bournemouth & B.	32	7	8	17	33	55	22
Norwich City	31	8	6	17	31	55	22
Plymouth Argyle	34	7	6	21	32	74	20
Reading	29	7	5	17	27	66	19

FRONT COVER SHOT

WE'VE not had too much to laugh about lately, but the photographer tried his best to give us a smile with this goalmouth shot from the last home game. Actually, Tommy Baldwin is getting in a deflecting back-header, but he appears to be on a kick in the pants from Liverpool back Alec Lindsay . . . and that ball has positively "gone to the head" of Peter Osgood!

FOOTBALL LEAGUE

HARRIS	30	MULLIGAN	17
HOLLINS	31	BALDWIN	15
OSGOOD	30	GARLAND	9 (1)
WEBB	30	PHILLIPS	7
HUDSON	25	McCREADIE	6
DEMPSEY	25	HINTON	5 (1)
COOKE	24 (3)	SMETHURST	2
HOUSEMAN	24 (1)	WELLER	2
BONETTI	22	POTRAC	1
BOYLE	18	SHERWOOD	1
KEMBER	17 (2)	FEELY	— (1)

Goalscorers: Osgood 16, Hollins 9, Baldwin 6, Cooke 2, Kember 2, Dempsey 1, Garland 1, Houseman 1, Hudson 1, Weller 1, Total 40.

FOOTBALL LEAGUE CUP

HARRIS	9	BOYLE	6
HOLLINS	9	BALDWIN	5 (2)
HUDSON	9	DEMPSEY	5 (2)
OSGOOD	9	GARLAND	5
WEBB	9	MULLIGAN	5
BONETTI	8	HINTON	4
COOKE	7	McCREADIE	1 (1)
HOUSEMAN	7	PHILLIPS	1

Goalscorers: Baldwin 4, Hollins 4, Osgood 4, Garland 2, Hudson 2, Cooke 1, Houseman 1, Webb 1. Total 19.

F.A. CUP

BONETTI	3	OSGOOD	3
COOKE	3	WEBB	3
HARRIS	3	KEMBER	2 (1)
HOLLINS	3	DEMPSEY	2
HOUSEMAN	3	GARLAND	1
HUDSON	3	McCREADIE	1
MULLIGAN	3		

Goalscorers: Cooke 1, Dempsey 1, Hollins 1, Houseman 1, Osgood 1, Webb 1. Total 6.

EUROPEAN CUP-WINNERS' CUP

BONETTI	4	WEBB	4
BOYLE	4	BALDWIN	3
COOKE	4	HOUSEMAN	3
HARRIS	4	HINTON	2 (2)
HOLLINS	4	DEMPSEY	2
HUDSON	4	MULLIGAN	1 (1)
OSGOOD	4	McCREADIE	1

Goalscorers: Osgood 8, Baldwin 4, Houseman 3, Hollins 2, Hudson 2, Webb 2, Harris 1. Total 22.

FOOTBALL COMBINATION

BROLLY	27 (1)	MORRISON	7 (2)
POTRAC	27	W. SMITH	6
DROY	26	BALDWIN	5
FEELY	24 (2)	MULLIGAN	5
LOCKE	23	SMETHURST	4
VAUGHAN	21 (3)	SPONG	4
HOUSTON	19	G. WILKINS	3 (1)
PHILLIPS	19	B. BASON	3
CRAKER	14 (3)	DEMPSEY	3
STANLEY	14 (1)	D. GRADI	2 (2)
HINTON	13	PRICE	2 (1)
BRITTON	12	BONETTI	2
FINNIESTON	12	COOKE	2
PERKINS	12	WELLER	2
SHERWOOD	12	DAVIS	1 (1)
LAWRENCE	10	D. EBANKS	1
BARRY	9 (2)	HOUSEMAN	1
McCREADIE	9	HUDSON	1
BOYLE	8	HUTCHINSON	1
GARLAND	7	KEMBER	1

Goalscorers: Potrac 12, Feely 7, Brolly 3, Finnieston 3, Vaughan 3, Baldwin 1, Barry 1, Craker 1, Droy 1, Hutchinson 1, Smethurst 1, Stanley 1, Opponents 2. Total 37.

in off the post

Your letters should be of not more than 150 words and addressed to "In off the Post", Chelsea F.C., Fulham Road, London, S.W.6.

TERRY MEETS THE TEAM

TERRY is eleven years old and suffers from leukaemia. He was one of the patients interviewed by Rolf Harris in his Christmas morning Television programme.

We have known about Terry for some time and have done what we could to help. Our Treasurer went shopping to get some tapes for Terry's recording machine and when the owner of our Surbiton photographic shop heard who the tapes were for, he promptly gave them, together with five records for Terry's record-player.

When our Treasurer discovered that her new neighbour was a Chelsea footballer, and knowing that Terry was a Chelsea fan, she mentioned this to Chris Garland, who went along to see Terry, armed with a scarf and team photograph.

Next, Chris arranged for Terry to visit Chelsea Football Club. Our photographic shop provided Terry with a camera, films and flash bulbs for his visit, and Terry was picked up by Peter Osgood and taken in his Jaguar to meet all the team. He returned with an autographed football.

We are so grateful to all who helped to give Terry so much happiness.

National Society for Cancer Relief. News-Letter (Surbiton Committee Report), February, 1972.

PROGRAMMES WANTED

I would like to buy the following Chelsea back numbers: v. Leeds (10.1.70); v. Everton (Charity Shield (9.8.70).

D. O'Connor, 80 Jerningham Road, New Cross, London, S.E.14.

LOST AT WEMBLEY

I WONDER if any supporter found a camera which I lost at Wembley on League Cup Final day.

I was in B21 section and in the excitement of Osgood scoring it must have fallen out of my pocket. I didn't notice it was missing until about half-way through the second half and by that time I had moved with the crowd to a different position.

I was in the middle of Chelsea supporters, so hope one of them picked it up and handed it in. I have also written to Wembley.

Stewart MacAlpine.

7 Elmers Drive,
Kingston Road,
Teddington,
Middlesex.

THANKS FROM STEVE

I AM writing to send my appreciation to all the staff at Chelsea who have sent letters and a photograph of the team to me since I broke my knee in November. They really cheered me up.

Steve Tatam.

16 Stevenage Road,
East Ham,
London, E6 2AX.

DESPERATE PLEA

I am writing this in desperation, as nowhere can I find a girl who supports Chelsea. There must be one out there somewhere, preferably over 20, who will write to me.

Laurie Mann, 142 Hampton Road, Forest Gate, London, E.7.

THE REAL 'MISS CHELSEA'



SHE'S four months old, she lives at 112 Kingshill Avenue, Northolt, Middlesex, and the name on her birth certificate is "Chelsea Thompson".

Her father is Chelsea fanatic Noel Thompson—he's both a Pools Member and an Agent.

Baby Chelsea was born on November 27, and Noel says: "If she'd been a boy, the name would have been Peter Osgood Thompson".

PROGRAMMES WANTED

I require the following programmes and am willing to pay a reasonable price for them: 1970/71 Liverpool v. Chelsea, Coventry City v. Chelsea; 1971/72 Chelsea v. Derby Co., v. Wolves, v. Southampton.

S. Parker, "San Michele", Knotty Green Road, Forty Green, Beaconsfield, Bucks.

* * *

Does any reader have the following Chelsea programmes to sell or swap: v. Southampton 23rd October 1971; v. Nottingham Forest 6th November 1971 (two copies if possible); v. Leeds United 11th December 1971.

E. C. Dean, 103 Levita House, Chalton Street, London, N.W.1.

* * *

I am willing to pay up to 40p for each of the following (last season's) programmes: Real Madrid v. Chelsea (Athens—Final and Replay); Man. City v. Chelsea (Away—Cup Winners' Cup semi-final).

Mark Stanford, 15 Farm Close, Dormers Wells Lane, Southall, Middlesex.

CHELSEA v. WEST HAM UNITED

Past League Results

Season	Home	Away	Season	Home	Away
1923-24	0-0	0-2	1964-65	0-3	2-3
1930-31	2-1	1-4	1965-66	6-2	1-2
1931-32	3-2	1-3	1966-67	5-5	2-1
1958-59	3-2	2-4	1967-68	1-3	1-0
1959-60	2-4	2-4	1968-69	1-1	0-0
1960-61	3-2	1-3	1969-70	0-0	0-2
1961-62	0-1	1-2	1970-71	2-1	2-2
1963-64	0-0	2-2	1971-72	Today	1-2

(Chelsea's score given first in each case)

Summary	P	W	D	L	F	A	Pts
Home	15	6	5	4	28	27	17
Away	16	2	3	11	19	36	7
Total	31	8	8	15	47	63	24

WEST HAM'S RESULTS THIS SEASON

(Numbered in sequence order)

FOOTBALL LEAGUE

Home	Away
1. West Brom. L 0-1	2. Derby .. L 0-2
4. Ipswich .. D 0-0	3. Nottm' F. L 0-1
5. Everton .. W 1-0	7. Newcastle D 2-2
6. Coventry .. W 4-0	10. Man. Utd. L 2-4
9. Chelsea .. W 2-1	13. Leeds .. D 0-0
12. Stoke .. W 2-1	16. West Brom. D 0-0
15. Leicester .. D 1-1	20. C. Palace W 3-0
18. Wolves .. W 1-0	22. Huddersf'd L 0-1
21. Sheff. Utd. L 1-2	25. Liverpool L 0-1
24. Man. City L 0-2	28. S'th'mpt'n D 3-3
26. Arsenal .. D 0-0	31. Tottenham W 1-0
30. Newcastle L 0-1	34. Everton .. L 1-2
32. Man. Utd. W 3-0	38. Ipswich .. L 0-1
37. Derby .. D 3-3	40. Wolves .. L 0-1
42. C. Palace .. D 1-1	44. Sheff. Utd. L 0-3
45. Huddersf'd W 3-0	46. Leicester.. L 0-2
47. Nott'm. F. W 4-2	48. Coventry.. D 1-1

Goalscorers: Best 16, Robson 8, Hurst 6, Brooking 4, Bonds 2, Coker 1, Lampard 1, Opponent 1. Total 39.

LEAGUE CUP

Home	Away
8. Cardiff .. D 1-1	11. Cardiff .. W 2-1
14. Leeds .. D 0-0	17. Leeds .. W 1-0
19. Liverpool.. W 2-1	27. Stoke .. W 2-1
23. Sheff. Utd. W 5-0	33. Stoke .. D 0-0
29. Stoke .. L 0-1	(at Hillsboro')
	35. Stoke .. L 2-3
	(at Old Trafford)

Goalscorers: Best 4, Hurst 4, Robson 4, Bonds 2, Brooking 1. Total 15.

F.A. CUP

Home	Away
36. Luton .. W 2-1	39. Hereford.. D 0-0
41. Hereford .. W 3-1	43. Huddersf'd L 2-4

Goalscorers: Hurst 4, Best 2, Robson 1. Total 7.

CHELSEA POOLS ANNOUNCEMENT

IF you can't find an Agent in your locality, you can still enter the Chelsea Pool—by sending a cheque or postal orders for 95p. This will bring you the chance every week of winning the many big prizes in the Chelsea Pool.

Send your remittance, together with your name and address, to: Chelsea Pools Association, Chelsea F.C., Stamford Bridge Grounds, Fulham Road, London, S.W.6.

★ STARS ★ in the ★ ★ STAND



CHARLIE DRAKE

IF Charlie ("Hello, my Chelsea darlings") Drake still supported the team he shouted for as a kid, he would have been following Millwall in their battle towards the First Division instead of cheering Chelsea in the League Cup Final at Wembley. He was born at Elephant & Castle, and spent his boyhood Saturday afternoons at The Den.

He is a comparatively recent Chelsea convert. Clad in blue sweater, red slacks and grey jacket, he broke off from the TV script he was writing in his secluded top-floor flat just off Leicester Square and explained what brought him to Stamford Bridge:-

"It's all down to my friend Joe Baker. He's a senior member of Ind Coope's sales force in London—ex-army, bowler hat and umbrella type from Earls Court Road—and he has two season-tickets here. He's been a fan for about 40 years, and one day he said to me 'Why don't you come and see Chelsea?'"

"I must say it's a very nice seat there in the front row of the East Stand. No, there's no trouble with autograph hunters—I naturally sign a few, but it's the team they come to see, not me, and they accept me as one of themselves—as a Chelsea fan."

Charlie had a long haul to reach the top as one of the world's leading family comedians. "First, there were 15 years on various variety stages. TV gave me a shove forward, but I was on the box nearly

seven years before I got a series—and then that first one was a disaster!"

As a star in his own profession, Charlie fully appreciates the star's role in football. "I know the team is the thing, but it's the top names who switch the rest on, win games, pull the crowds. You've got to go along with someone like Osgood, a man of uncommon talent. Arrogance goes with genius. He's got to prove himself every week—the fans expect it—and the pressure on a player like him is extra.

"Chelsea really turned the South on two seasons ago when they won the F.A. Cup, and followed up with that big European success last year. They've botched things up a bit this past month, but with so much talent on tap I'm sure we'll be able to make a big noise about 'em again next season.

"Webb's enthusiasm is simply enormous, and Houseman impresses me no end. He doesn't cut the figure of someone like Osgood, but he has his own kind of class and, what's more, he's the last man in the game to get dirty."

Charlie Drake is not without on-the-field experience himself. He played for the R.A.F. in India, and there was also one game for a Showbiz team when he was in a summer show at Blackpool. Or rather part of one game. "I was doing a Stanley Matthews at outside-right, and suddenly this left-back sent me crashing to the ground with a great sliding tackle. I thought he'd broken both my ankles. As I picked myself up, I said to myself 'One more of those, Charlie, and you won't be top of the bill tonight—you'll be in hospital. And I walked off.'"

FIXTURES 1971-1972

Football League

Copyright of the Football League

						<i>Attendance</i>	
1971		<i>Opponents</i>	<i>Venue</i>	<i>Results</i>	<i>Goalscorers</i>	<i>Home</i>	<i>Away</i>
Sat.	Aug. 14	Arsenal ..	Away	L 0-3	49,174
Wed.	" 18	MAN. UTD. ..	HOME	L 2-3	Baldwin, Osgood ..	54,763	
Sat.	" 21	MAN. CITY ..	HOME	D 2-2	Baldwin, Weller ..	38,425	
Tues.	" 24	Everton ..	Away	L 0-2	38,994
Sat.	" 28	Huddersfield T. ..	Away	W 2-1	Hollins (pen.), Osgood	15,030
Wed.	Sept. 1	WEST BROM. A. HOME	W	1-0	Hollins ..	29,931	
Sat.	" 4	COVENTRY C. ..	HOME	D 3-3	Osgood 2, Hollins ..	35,459	
Sat.	" 11	West Ham United	Away	L 1-2	Hollins	36,866
Sat.	" 18	DERBY C. ..	HOME	D 1-1	Baldwin ..	42,872	
Sat.	" 25	Sheffield United ..	Away	L 0-1	40,651
Sat.	Oct. 2	WOLVES ..	HOME	W 3-1	Baldwin, Houseman, Hollins ..	42,706	
Sat.	" 9	Liverpool ..	Away	D 0-0	48,464
Sat.	" 16	ARSENAL ..	HOME	L 1-2	Osgood ..	52,338	
Sat.	" 23	SOUTHAMPTON HOME	W	3-0	Baldwin, Kember, Hollins (pen.)	38,940	
Sat.	" 30	Leicester City ..	Away	D 1-1	Osgood	36,574
Sat.	Nov. 6	NOTTM. F. ..	HOME	W 2-0	Cooke, Osgood ..	25,812	
Sat.	" 13	Stoke City ..	Away	W 1-0	Osgood	22,190
Sat.	" 20	Crystal Palace ..	Away	W 3-2	Baldwin, Hudson, Osgood	34,637
Sat.	" 27	TOTTENHAM H. HOME	W	1-0	Cooke ..	52,581	
Sat.	Dec. 4	Newcastle United	Away	D 0-0	37,562
Sat.	" 11	LEEDS U. ..	HOME	D 0-0	45,867	
Fri.	" 17	Coventry City ..	Away	D 1-1	Osgood	22,424
Mon.	" 27	IPSWICH T. ..	HOME	W 2-0	Kember, Garland ..	43,896	
1972							
Sat.	Jan. 1	Derby County ..	Away	L 0-1	33,663
Sat.	" 8	HUDDERSFIELD HOME	D	2-2	Hollins, Osgood ..	30,801	
Sat.	" 22	Manchester U. ..	Away	W 1-0	Osgood	55,927
Sat.	" 29	EVERTON ..	HOME	W 4-0	Osgood 2, Hollins (pen.), Dempsey	38,558	
Sat.	Feb. 19	LEICESTER C. ..	HOME	W 2-1	Osgood 2 ..	38,783	
Sat.	Mar. 11	LIVERPOOL ..	HOME	D 0-0	38,691	
Tues.	" 14	Nott'm. Forest ..	Away	L 1-2	Hollins (pen.)	13,346
Sat.	" 18	Manchester City ..	Away	L 0-1	53,322
Sat.	" 25	WEST HAM U. ..	HOME	
Wed.	" 29	SHEFFIELD U. ..	HOME	
Sat.	Apr. 1	Ipswich Town ..	Away	
Mon.	" 3	Wolverhampton W. ..	Away	
Sat.	" 8	CRYSTAL PAL. HOME	
Sat.	" 15	Tottenham H. ..	Away	
Tues.	" 18	Southampton ..	Away	
Sat.	" 22	NEWCASTLE U. HOME	
Wed.	" 26	West Bromwich A. ..	Away	
Sat.	" 29	Leeds United ..	Away	
Undated:		STOKE CITY ..	HOME	

European Cup-Winners' Cup

						<i>Attendance</i>	
				<i>Goalscorers</i>		<i>Home</i>	<i>Away</i>
Wed.	Sept. 15	(1) Jeunesse Hautcharage (Lux.)	Away	W 8-0	Osgood 3, Houseman 2, Hollins, Webb, Baldwin	13,000
Wed.	" 29	(1) JEUNESSE H. (Won 21-0 on aggregate)	HOME	W 13-0	Osgood 5, Baldwin 3, Hudson, Hollins (pen.), Webb, Harris, Houseman ..	27,621	
Wed.	Oct. 20	(2) Atvidaberg (Sweden)	Away	D 0-0	10,212
"	Nov. 3	(2) ATVIDABERG (Lost on away goal)	HOME	D 1-1	Hudson ..	28,071	

Football League Cup

Wed.	Sept. 8	(2) PLYMOUTH	HOME	W 2-0	Houseman, Hollins ..	23,011	
Wed.	Oct. 6	(3) Nott'm. Forest	Away	D 1-1	Webb	16,811
Mon.	" 11	(Rep.) NOTTM F.	HOME	W 2-1	Baldwin, Osgood ..	24,817	
Wed.	" 27	(4) BOLTON W.	HOME	D 1-1	Hudson ..	27,679	
Mon.	Nov. 8	(Rep.) Bolton W.	Away	W 6-0	Baldwin 3, Hollins 2 (1 pen.), Cooke	29,805	
Wed.	" 17	(5) Norwich City ..	Away	W 1-0	Osgood ..	35,927	
Wed.	Dec. 22	(Sf) TOTTENH'M	HOME	W 3-2	Osgood, Garland, Hollins (pen.)	43,330	
Wed.	Jan. 5	(Sf) Tottenham	Away	D 2-2	Garland, Hudson	52,755
Sat.	Mar. 4	(F) Stoke City	Wembley	L 1-2	Osgood	100,000

F.A. Cup

Sat.	Jan. 15	(3) Blackpool ..	Away	W 1-0	Dempsey	22,135
Sat.	Feb. 5	(4) BOLTON W.	HOME	W 3-0	Hollins (pen.), Houseman, Cooke	38,066	
Sat.	" 26	(5) Orient ..	Away	L 2-3	Webb, Osgood	30,329

WE SCORE FIRST AWAY TO FOREST AND



A great shot by Steve Kember from the edge of the penalty-area looked like finding the target in last week's match against Nottingham Forest. Instead it hit the bar.



Is it there? That's what Chris Garland (right) is probably wondering as John Dempsey's shot sends our former goalkeeper Jim Barron flying through the air.

THEN LOSE TO TWO IN THREE MINUTES



John Hollins sends Barron the wrong way and puts us ahead from the penalty-spot, but Forest themselves replied with a penalty and three minutes later Gemmell scored again.



A terrific scramble in Forest's goalmouth ends with Tommy Baldwin's header being cleared by one of those defenders standing guard on the goal-line.

Football Combination

1971	Opponents	Venue	Result
Sat. Aug. 14	BOURNEM'TH	HOME	W 2-0
Tues. " 17	Swindon Town	Away	D 2-2
Wed. " 25	SWANSEA CITY	HOME	L 1-2
Sat. " 28	CARDIFF CITY	HOME	W 3-0
Tues. " 31	Birmingham City	Away	D 0-0
Sat. Sept. 4	Crystal Palace	Away	L 0-3
Wed. " 8	Bristol City	Away	L 1-4
Sat. " 11	ARSENAL	HOME	W 1-0
Wed. " 15	BIRMINGH'M C.	HOME	L 1-2
Wed. " 22	OXFORD U.	HOME	D 1-1
Sat. " 25	WEST HAM U.	HOME	W 2-1
Sat. Oct. 2	Bournemouth	Away	W 3-1
Wed. " 13	Oxford United	Away	L 1-2
Sat. " 23	Leicester City	Away	L 1-5
Sat. " 30	SOUTHAMPTON	HOME	D 1-1
Mon. Nov. 1	Fulham	Away	L 0-2
Sat. " 6	Norwich City	Away	D 0-0
Sat. " 13	BRISTOL ROV.	HOME	L 0-1
Sat. " 27	Tottenham H.	Away	L 0-2
Sat. Dec. 4	Q.P.R.	HOME	W 3-0
Wed. " 8	Reading	Away	L 0-2
Sat. " 18	FULHAM	HOME	L 0-1

1972	Opponents	Venue	Result
Sat. Jan. 1	CRYSTAL PAL.	HOME	D 1-1
Wed. " 5	Cardiff City	Away	L 0-2
Sat. " 22	SWINDON T.	HOME	W 5-1
Sat. " 29	Swansea City	Away	W 1-0
Sat. Feb. 12	LEICESTER C.	HOME	L 1-2
Sat. " 19	Southampton	Away	W 2-0
Sat. " 26	NORWICH C.	HOME	W 1-0
Tues. " 29	Bristol Rovers	Away	L 0-1
Tues. Mar. 7	PLYMOUTH A.	HOME	D 0-0
Sat. " 11	Arsenal	Away	D 2-2
Mon. " 13	IPSWICH T.	HOME	L 1-2
Sat. " 18	BRISTOL CITY	HOME	D 0-0
Sat. " 25	West Ham United	Away
Sat. Apr. 8	Q.P.R.	Away
Tues. " 11	Ipswich Town	Away
Sat. " 15	TOTTENHAM H.	HOME
Sat. " 22	Plymouth Argyle	Away
Sat. " 29	READING	HOME

LONDON F.A. CHALLENGE CUP

Mon. Sept. 27 (1) West Ham U... Away L 0-1

F.A. YOUTH CUP

Wed. Nov. 24 (2) Orient .. Away D 0-0
 Mon. Dec. 6 (Rep.) ORIENT .. HOME W 3-0
 Mon. Jan. 3 (3) MILLWALL .. HOME W 3-2
 Mon. " 31 (4) CRYSTAL P... HOME W 3-0
 Tues. Feb. 22 (5) ASTON V. .. HOME D 1-1
 Mon. " 28 (Rep.) Aston Villa Away L 0-3

SOUTHERN JUNIOR FLOODLIT CUP

Tues. Oct. 5 (1) Brentford .. Away W 3-2
 Tues. Nov. 16 (2) Swindon Town Away D 1-1
 Wed. Dec. 15 (Rep.) SWINDON HOME W 2-0
 Tues. Mar. 28 (3) Southampton.. Away

LONDON F.A. YOUTH CUP

Mon. Dec. 13 (1) WEST HAM.. HOME W 1-0
 Mon. Mar. 20 (Sf) MILLWALL HOME W 4-1

Junior Fixtures

S.E. COUNTIES LEAGUE—DIVISION I

1971	Opponents	Venue	Result
Aug. 14	ORIENT	HOME	W 5-0
" 21	CRYSTAL PALACE	HOME	D 1-1
" 28	Reading	Away	W 4-2
Sept. 4	CHARLTON A.	HOME	W 2-0
" 11	Reading (Cup—1st Rd.)	Away	D 3-3
" 18	READING (Cup-Rep.)	HOME	W 4-0
" 25	GILLINGHAM	HOME	W 2-0
Oct. 2	West Ham United	Away	W 2-1
" 9	Q.P.R.	HOME	W 2-0
" 16	Ipswich (Cup—2nd Rd.)	Away	W 2-1
" 23	Millwall	Away	D 1-1
" 30	LUTON TOWN	HOME	D 1-1
Nov. 6	Tottenham Hotspur	Away	L 3-4
" 13	READING	HOME	W 5-1
" 20	Watford	Away	W 3-1
" 27	Luton Town	Away	W 3-2
Dec. 4	WEST HAM UTD.	HOME	D 1-1
" 11	ARSENAL	HOME	D 0-0
" 18	Q.P.R.	Away	W 5-0

1972	Opponents	Venue	Result
Jan. 1	IPSWICH TOWN	HOME	D 0-0
" 8	Gillingham	Away	L 1-2
" 15	FULHAM	HOME	L 0-1
" 22	Brentford	Away	W 2-0
" 29	WATFORD	HOME	W 3-0
Feb. 5	Charlton Athletic	Away	W 2-0
" 7	ARSENAL (Cup—Sf)	HOME	D 0-0
" 12	Ipswich Town	Away	D 0-0
" 26	Orient	Away	W 2-1
Mar. 11	Arsenal	Away	L 0-4
" 18	Crystal Palace	Away	L 0-1
" 25	BRENTFORD	HOME
Apr. 8	TOTTENHAM H.	HOME
" 18	Fulham	Away
" 22	MILLWALL	HOME

S.E. COUNTIES LEAGUE—DIVISION II

Aug. 21	Charlton Ath. (Cup)	Away	D 3-3
" 28	ORIENT (Cup)	HOME	W 4-1
Sept. 4	WEST HAM U. (Cup)	HOME	W 3-0
" 11	CHARLTON A. (Cup)	HOME	D 0-0
" 18	Gillingham (Cup)	Away	L 0-3
Oct. 2	CRYSTAL P. (Cup)	HOME	L 2-3
" 9	West Ham U. (Cup)	Away	D 1-1
" 16	WEST HAM UTD.	HOME	W 1-0
" 23	Tottenham H. (Cup)	Away	L 0-1
Nov. 6	Orient (Cup)	Away	W 2-0
" 20	TOTTENHAM H. (Cup)	HOME	L 1-3
Dec. 4	Crystal Palace (Cup)	Away	L 0-2
" 18	Gillingham (Cup)	Away	W 5-1
Jan. 8	ORIENT	HOME	W 4-1
" 15	West Ham United	Away	D 1-1
" 22	CHARLTON A.	HOME	W 3-2
Feb. 12	Crystal Palace	Away	W 2-1
" 26	Gillingham	Away	W 4-0
Mar. 11	Tottenham Hotspur	Away	L 0-5
" 18	CRYSTAL PALACE	HOME	L 0-2
" 25	Charlton Athletic	Away
" 27	Orient (Cup—Sf)	Away
Apr. 15	TOTTENHAM	HOME
" 15	GILLINGHAM	HOME
" 22	Orient	Away

Home matches, on Saturdays, kick-off 11 a.m. are played at the Imperial Services Ground, Bishopsford Road, Mitcham, Surrey.

By Albert Sewell

BETWEEN OURSELVES

Programme Editor

AFTER having substitutes for seven seasons in our domestic football, there is not much doubt that the system has worked well and to the benefit of the game. When substitutes were introduced at the start of season 1965-66, fears were expressed that unscrupulous managers or coaches might "invent" injuries in order to replace an off-form player—and some did—but this was soon remedied by changing the regulation to read "a club may, at its discretion, use one substitute player at any time in a match. . . ."

Now I suggest we are ready for another amendment, to permit a second replacement—in goal. The point was thrown up again in last Saturday's F.A. Cup quarter-final at Birmingham, where Huddersfield lost David Lawson directly after half-time. Inevitably, as he was carried off on a stretcher, his team's semi-final hopes went with him. "An experienced goalkeeper might well have prevented Birmingham's second and third goals," reported Monday's *Daily Telegraph*.

It is ludicrous that while any one of the ten outfield players can be substituted at any time for any reason (bar sending-off), if the one truly specialist player on the field, the goalkeeper, is injured, he can only be replaced in makeshift fashion. Maybe it's asking too much for 92 League clubs to pack a spare goalkeeper in the kit-skip for every one of 42 or more League games per season. In any case, in the League there's always next week, but Cup football, by its very essence of instant death, presents a special case.

Take, for example, past Cup experiences of the two goalkeepers in action here today. Two years ago, when Chelsea won the F.A. Cup Final replay against Leeds at Old Trafford, Peter Bonetti played an hour of normal time and then the extra half-hour virtually on one leg. If the injury to the other knee had been just one degree worse he would have had to leave the field for good. I've no doubt Dave Webb would have made a fair fist of things between the sticks, but against a team of Leeds' calibre could Chelsea have hoped to bring home the Cup with an outfield player in goal for so long? Webby certainly wouldn't have been at the other end of the field to head the winner, would he?

And take West Ham's Bobby Ferguson. Two months ago, in the final episode of the four-match League Cup semi-final marathon against Stoke at Old Trafford, he was carried off concussed after 14 minutes. He returned still dazed 20 minutes later, against the Manchester United doctor's advice, and instinctively went through the goalkeeping motions for the rest of the game. At the end he didn't know it was over or the result. While Ferguson was off, Bobby Moore went in goal. So West Ham were hit not once, but twice by that injury—they lost a specialist in goal and they lost Moore in his role of commander-in-chief defence.

The goalkeeper is a very special animal. A centre-forward can miss three open goals and still finish hero of the day by scoring in the last minute; your goalkeeper does not survive one major error in ten. For years goalkeeper substitutes have been permitted in friendly Internationals. They are now accepted in the three big European club tournaments. As the F.A. Cup reaches its centenary this year, let's hope we don't have to wait another century before injured goalies can be properly replaced. The Football League might like to consider taking the initiative in their own Cup . . . and next season wouldn't be too soon.

PEN PALS WANTED . . .

Dear Chelsea! My name is Henrik and I live in Denmark in a little town whose name is Frederikshavn. I have seen your team in TV a lot of times and you play wonderful football. Maybe I shall come to England in the next holiday and see you.

Could you send me a PEN-FRIEND from Chelsea? I am 15 years old.

Henrik Rasmussen, Peter Mollersgade 36 9900, Frederikshavn, Denmark.

* * *

As I live in Blackburn, I cannot get a lot of news about Chelsea, apart from the programmes I send for regularly. I would like to exchange newspaper cuttings, programmes, football magazines, etc., with anyone of my own age (i.e. 14-15).

Anthony Blackburn, 56 Poplar Street, Blackburn, Lancs.

* * *

I would like to meet a girl supporter who would go to Chelsea home games with me. I am 17 years old.

Tony Moore, 16 Estelle House, Henry Dickens Court, Kensington and Chelsea, London, W.11.

* * *

I am an Aberdeen supporter and like most people up here I have a favourite English team. Mine is Chelsea and I would like a male pen-pal aged about 13 who will swap Aberdeen for Chelsea programmes.

D. Little, 6 Broomhill Avenue, Aberdeen, Scotland, AB1 6JY.

* * *

I am 15 years old and listen, here in New Zealand, for Chelsea's result every week. I would very much like to have a Chelsea pen-friend—boy or girl of about my age.

G. R. Town, 34 Watling Street, Epsom, Auckland 3, New Zealand.

* * *

I would like a boy pen-pal, aged 15-17 to tell me about all the Chelsea matches I miss, because my parents will not allow me to go on my own and my sister will not come with me.

I heard about your pen-pal letters from my friend, who got quite a number of replies. Her name is Sandra Wood and I would be glad if those who did not get chosen as her pen-pals would write to me.

Rosemarie Hurd, 7 Coomber House, Townmead Estate, Fulham, S.W.6.

I would like a pen-pal to swap Chelsea programmes for Scunthorpe United programmes.

P. Southwick, 25 Bellingham Road, Ashby, Scunthorpe, Lincs.

* * *

I am a keen follower of Aberdeen and am anxious to get a Chelsea supporter (boy or girl aged, 13-15) as a pen-pal.

Gordon G. Ritchie, 23 Allochy Road, Inverallochy, Aberdeenshire, Scotland.

* * *

I am 15 and would like a boy pen-pal, aged about 16, who could tell me about Chelsea's matches, as I cannot get to see them very often.

Ann Hollyoake, 19 Orchard Close, Hounslow, Totton, Nr. Southampton, Hants. S04 4EZ.

* * *

I am a Rochdale supporter, aged 15, and like Chelsea a real lot, so would like a Chelsea pen-friend—any age, boy or girl.

Margaret Rawson, 56 Hope Street, Rochdale, Lancs.

* * *

Here in Rumania, I am a great supporter of your team. Chelsea are delegates of English football, and very much appreciated in our country. I you congratulate for the nice behaviour in the European Cup-Winners' Cup.

I want to correspond with a fan of Chelsea. I'm 18 and a pupil at secondary school. I'm fond of pop music and my hobby is collecting football photos and badges, so please will someone send me the banner, the badge and the team picture of Chelsea?

Dorin Oltean, Cartier Alea Carpati, Bloc 43, Apartment 30, Tirgu-Mures, Rumania.

* * *

I am 18 and a keen Aberdeen supporter, and have always wanted a Chelsea pen-pal.

D. Forbes, 36 Stewart Crescent, Northfield, Aberdeen, Scotland, AB25XY.

* * *

Living in Scotland, I cannot come and watch Chelsea, so would be grateful to any Chelsea fan who will write to me.

Stuart Jack, 86B Rannoch Road, Letham, Perth, Scotland.

££££££££££

CHELSEA POOLS SECOND GREAT SEASON

££££££££££

Committee:

MR. J. B. MEARS (Chairman)
 VISCOUNT CHELSEA
 MR. L. J. MEARS
 MR. G. M. THOMSON
 MR. R. S. ATTENBOROUGH, C.B.E.
 MR. D. SEXTON

Organiser and Secretary:
 MR. GEOFF ABEL

CHELSEA F.C. POOLS ASSOCIATION

STAMFORD BRIDGE GROUNDS
 FULHAM ROAD, LONDON S.W.6

01-385 3255

GROWING . . . growing . . . growing all the time! That's the Chelsea Pool. In fact, it has grown nearly 40 per cent since the first day of the season, when the prize money totalled £501.95.

On New Year's Day we paid out £583.12 . . . on February 5 the prize money totalled £660.43 . . . and two weeks ago (March 11) it reached the season's highest single-week total: £698.65. And that means, as we said, our Pool is nearly 40 per cent bigger than it was last August.

If you haven't already joined, you can help the go-go-go Chelsea Pool to grow-grow-grow by enrolling now as an Agent or Member. Chelsea Pools Agents qualify for all of the following:

- 12½p in the £1 commission
- Free tickets to certain Chelsea matches
- Free weekly draw, with Premium Bond prizes.
- Official "centurion" pass to all home First Division matches if you sell 100 or more tickets weekly.
- 5% bonus on all winners sold.

Please return to:

Chelsea F.C. Pools Association, Stamford Bridge Grounds, Fulham Road, S.W.6.

I would like to help Chelsea Football Club by acting as an Agent for the "Chelsea Big Pool". Please send me details. I am over 18.

Name (Mr./Mrs./Miss)

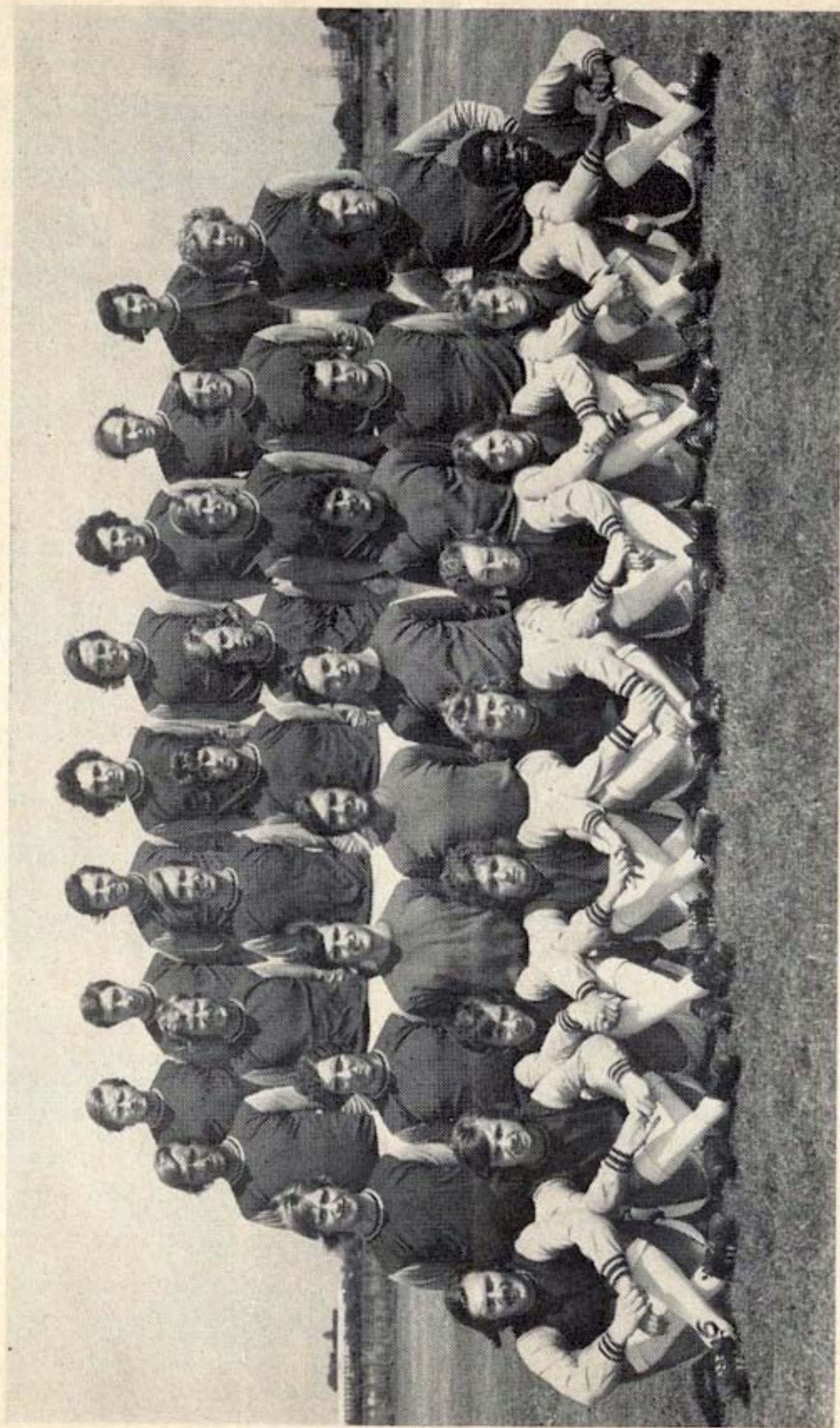
Address

.

. County

I estimate I shall require tickets for members.

WEST HAM UNITED 1971-72



Back row: Joe Durrell, Barry Barnes, Ron Boyce, John McDowell, Frank Lampard, Bobby Howe (now Bournemouth), Bryan Robson, John Ayris.

Second row: Billy Bonds, Dave Llewelyn, Paul Heffer, Geoff Hurst, Harry Redknapp, Tommy Taylor, Alan Stephenson, Bobby Moore.

Third row: Kevin Lock, John Watson, Paul Marsh, Peter Grotier, Mervyn Day, Bobby Ferguson, Trevor Brooking, Peter Eustace. Front row: Tony Marchant, Gary Oates, Paul Gregory, Alan Taylor, Chris Kinnear, Ray Fulton, Jimmy Brown, Gary Yallop, Ade Coker.

Copyright: West Ham United

FOCUS

on our

VISITORS

WEST HAM UNITED's season has been one of sharp contrasts. They began it with three League defeats and did not score a goal in the first four matches, but then struck splendid form with a run in which they lost only one of 12 First Division games.

In the League Cup they were within a stride of meeting us at Wembley—Stoke eventually beat them after a four-match marathon in the semi-final. So near, so far . . . and with a better return from their "out" matches Ron Greenwood's men would be coming here today considerably higher than mid-table.

But the fact that they have taken only one point from their last five away fixtures should not be allowed to hide a warning. The two games West Ham have won as visitors were both in London—Crystal Palace (3-0) and Tottenham (1-0). So they have yet to drop a point or concede a goal on other London grounds. Indeed, home and away, they are unbeaten in local "derbies" this season.

THEIR PLAYERS

BOBBY FERGUSON: Joined West Ham from Kilmarnock in May 1967 at what is still Britain's record fee for a goalkeeper, £65,000. A Scottish International (seven caps), he has been in particularly fine form this season. Born Ardrossan. 5 ft. 10½ in., 11 st. 11 lb.

JOHN McDOWELL: Has filled the right-back regularly since Billy Bonds moved into midfield. An England Youth International, he has missed only one first-team match this season. Born East Ham. 5 ft. 9 in., 11 st. 9½ lb.

FRANK LAMPARD: England Under-23 and former Youth International left-back who made his League debut in November 1967. Four years ago suffered a broken leg but missed only one League match last winter and was ever-present this term until missing Tuesday's match at Coventry because of England Under-23 commitments. Born West Ham. 5 ft. 10 in., 12 st. 11 lb.

BILLY BONDS: This bold determined player successfully switched from full-back to midfield this season. A £50,000 signing from Charlton in May 1967—and holder of two England Under-23 caps—he has missed only five League games in the past three seasons. Born Woolwich. 6 ft. 0½ in., 12 st. 10 lb.

TOMMY TAYLOR: Stylish centre-back, he has developed to top class in two seasons since his £78,000 transfer from Orient in October 1970. Was an England Schoolboy and Youth cap and has been ever-present for West Ham this season. Born Hornchurch. 6 ft., 12 st.

BOBBY MOORE: World-class defender and captain of West Ham and England (92 caps). Led England to victory in the 1966 World Cup and in recognition was awarded the O.B.E. Highlights in

500 club appearances were to captain West Ham to triumph in F.A. Cup (1964) and European Cup-Winners' Cup (1965). Born Barking. 6 ft., 12 st. 13 lb.

HARRY REDKNAPP: Fast, tricky winger now approaching his 200th senior game for West Ham. In 1963-64 helped England win the International Youth tournament. Born Poplar. 5 ft. 10 in., 11 st. 4 lb.

CLYDE BEST: This powerfully built raider is the Club's top scorer (22 goals) and has been a revelation this season. Signed professional for West Ham in April 1969 and made League debut four months later against Arsenal. Bermuda International. Born Bermuda. 6 ft. 2 in., 13 st.

GEOFF HURST: England striker with 48 caps, and the only player to score a World Cup Final hat-trick. West Ham's top scorer for the last six seasons. Began League career in February 1960 and is now nearing his 400th League appearance. Born Ashton-under-Lyne. 5 ft. 11½ in., 12 st. 9 lb.

TREVOR BROOKING: Elegant midfield player who gained his first England Under-23 cap against Switzerland this season. Previously a Schoolboy and Youth International. Professional at Upton Park since May 1966. Qualified F.A. Coach. Born Ilford. 6 ft. 0½ in., 12 st. 10 lb.

BRYAN ROBSON: Cost West Ham their record fee of £120,000 when signed from Newcastle in February 1971. Plays midfield-striker role and has two England Under-23 caps. Born Sunderland. 5 ft. 8 in., 11 st. 8 lb.

PAUL HEFFER: Tall, strong defender who began with West Ham as an amateur, turning professional in August 1965. At the start of this season had made 15 senior appearances. Born Upton Park. 6 ft. 2 in., 12 st. 11 lb.

PAT HOLLAND: A winger aged 21, he had his first League outing of the season against Nott'm. Forest last Saturday. Signed professional in April 1969 and made League debut v. Arsenal the same day. Born Poplar. 5 ft. 8 in., 11 st. 11 lb.



Club address:
Boleyn Ground,
Green Street,
London, E.13

OFFICIALS

Chairman: MR. REG. PRATT.
Secretary: MR. EDDIE CHAPMAN.
Manager: MR. RON GREENWOOD.
Assistant-Manager: MR. JOHN LYALL.
Physiotherapist: MR. ROB JENKINS.
Captain: BOBBY MOORE.

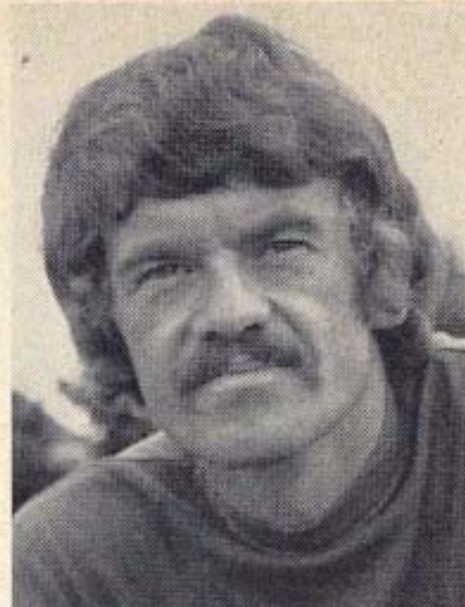
HONOURS

European Cup-Winners' Cup 1965.
F.A. Cup Winners 1964.
Div. II Champions 1958.

TALK - BACK

Today's subject in this special series of Chelsea interviews is our newly-appointed Club Captain

EDDIE McCREADIE



On being appointed Club captain:	I feel very honoured, and it came as quite a surprise when Dave Sexton told me. John Hollins, vice-captain of the club, is team captain when I'm not playing. What's the difference in roles? Well, the team captain is in charge on the field; the club captaincy involves me with all Chelsea's players—reserves, juniors as well—and it's my job to put their problems, ideas, etc., to Dave.
Chelsea's recent bad spell:	Terribly disappointing . . . yes. But you've got to fight these things. Look at Leeds now—playing great, but only last season they were knocked out of the Cup by Colchester and lost the League from a runaway position. And they'd been together as a side a lot longer than we have. What's happened to us with results this past month is no reason to forget our triumphs in the last two seasons. We still believe in the method that achieved those things; the pool of players here is just as strong; we'll come again, and be better than ever.
My present injury:	It's a double fracture of the cheekbone, which I did in a clash of heads in the Reserves away to Bristol Rovers at the end of last month. But it's better than, say, a leg injury because I'm training all the time and will be ready to play again as soon as the specialist says it's O.K. I'd play today if they'd let me. I hope it won't be more than two or three more weeks.
The injury "jinx"	Since we won the F.A. Cup two years ago I've had only about two dozen first-team games. It's been one thing after another—groin operation, broken nose, pulled hamstring, torn ligaments, ankle trouble and now this. But what about Ian Hutchinson—there's a guy to feel sorry for. Two weeks ago, in the taxi on the way to Harley Street for a check-up, we were discussing the bad luck we've both had . . . decided it's just Fate. He came away bubbling. The plaster was off his leg and he had chances of being back in the side next month. I was real pleased for him. Next day, in training, his leg went again. It's cruel . . . and to think I used to consider I was the unlucky one in the camp.
Biggest thrills of career:	First, being in the Scotland side that beat England 3-2 at Wembley in April 1967—we were the first team to defeat them after their World Cup triumph. And for Chelsea, those two terrific Cup Finals with Leeds in 1970.
Family details:	My wife's name is Ann (she's as Scottish as I am) and we have three children—Paul (7), Sean (3) and Ann Marie, aged 22 months. The latest addition is Troy, a nine-weeks' old Labrador puppy. We got him last Sunday. We live at Molesey, but are moving to a new house at Oxshott this summer.
Career ambitions:	First, to get back in the side and show the old form of two seasons ago. In June I hope to gain my full F.A. coaching certificate at Lilleshall, and I'm also working on things for my Testimonial and getting together a committee to help me with it next season.

MATCH SUMMARIES

FOOTBALL LEAGUE

Saturday, 11th March.

Drew with LIVERPOOL (Home) 0-0.

Chelsea: Bonetti; Harris, Houseman, Hollins, Dempsey, Webb, Cooke, Garland, Osgood, Hudson, Baldwin. Substitute (did not play): Kember.**Liverpool:** Clemence; Lawler, Lindsay, Smith, Lloyd, Hughes, Keegan, Hall, Heighway, Toshack, Callaghan.

Referee: Mr. H. Davey (Nottingham).

Attendance: 38,691.

In heavy going following morning sleet and rain, a particularly fine first half lacked only goals—oh, those missed chances! There was less rhythm to the second half, but in a final Chelsea flourish Baldwin struck wood and in the scramble that followed Hollins and Harris had shots blocked. Houseman did very well in the emergency role of full-back.

Tuesday, 14th March.

Lost to NOTTINGHAM FOREST (Away) 1-2. Half-time: 0-0.

Forest: Barron; Hindley, Gemmell, Chapman, Cottam, Fraser, Lyons, O'Neill, Buckley, Richardson, McKenzie.

Scorer: Gemmell 2 (1 penalty).

Chelsea: Bonetti; Harris, Boyle, Hollins, Dempsey, Webb, Garland, Cooke, Baldwin (Hinton), Kember, Houseman.

Scorer: Hollins (penalty).

Referee: Mr. V. James (York).

Attendance: 13,346.

After Kember hit the bar early second half, we took the lead (54 mins.) from Hollins' penalty after Barron brought down Garland. Forest equalised with a penalty for a trip on Buckley, and from 25 yards left-back Gemmell scored his second goal in three minutes to give Forest their first win for three months. Ankle injuries ruled out Osgood and Hudson.

FOOTBALL COMBINATION

Tuesday, 7th March.

Drew with PLYMOUTH ARGYLE (Home) 0-0.

Team: Phillips; Locke, Hinton, Droy, Perkins, Britton, Kember, Boyle (Stanley), Feely, Finnieston, Brolly.

Saturday, 11th March.

Drew with ARSENAL (Away) 2-2.

Team: Phillips; Morrison (D. Gradi), Lawrence, Droy, Perkins, Stanley, B. Bason, Boyle, Feely, Finnieston, Brolly.

Scorer: Finnieston 2.

Monday, 13th March.

Lost to IPSWICH TOWN (Home) 1-2

Team: Phillips; Price, Hinton, Lawrence, D. Gradi, Stanley, Perkins, B. Bason, Feely, Finnieston, Brolly.

Scorer: Feely.

S.E. COUNTIES LEAGUE—DIVISION I

Saturday, 11th March.

Lost to ARSENAL (Away) 0-4.

Team: D. Ebanks; S. Shoults, P. Sees, S. Pople, D. Jennings, Price, R. Steer (J. Bartlett), D. Perry, J. Walton, B. Bolton, R. McIntosh.S.E. COUNTIES LEAGUE—DIV. I CUP
(SEMI-FINAL)

Monday, 7th February

Drew with ARSENAL (Home) 0-0.

Team: Sherwood; N. Brown, G. Wilkins, Perkins, Spong, Price, Britton, Finnieston, Stanley, B. Bason, Brolly.

S.E. COUNTIES LEAGUE—DIVISION II

Saturday, 12th February.

Beat CRYSTAL PALACE (Away) 2-1.

Team: D. Ebanks; D. Jennings, C. Harris, C. Hyde, S. McDonald, R. Steer, M. Sorensen, D. Perry, J. Walton, A. Cottrell, G. Cramphorn.

Scorers: Walton, Cramphorn.

Saturday, 26th February.

Beat GILLINGHAM (Away) 4-0.

Team: D. Ounsworth; S. Shoults, A. Pelpoe, M. Sorensen, C. Hyde, D. Jennings, R. Steer, D. Perry, M. Quinn, J. Walton, S. Ellis.

Scorers: Perry 2, Sorensen, Walton.

Saturday, 11th March.

Lost to TOTTENHAM HOTSPUR (Away) 0-5.

Team: D. Ounsworth; J. Brennan, A. Pelpoe, Cunningham, C. Hyde, C. Harris, G. Cramphorn, T. Warren, A. Cottrell, M. Quinn, S. Ellis.

SOUTH-EAST COUNTIES LEAGUE

DIVISION I

	P	W	D	L	F	A	Pts
Arsenal	26	17	7	2	58	12	41
Tottenham	27	19	3	5	62	27	41
CHELSEA	26	14	7	5	50	24	35
Millwall	24	13	7	4	56	23	33
West Ham United ..	25	13	5	7	57	38	31
Crystal Palace ..	25	13	4	8	54	37	30
Fulham	25	10	8	7	33	31	28
Luton Town	26	11	5	10	41	43	27
Ipswich Town	26	9	8	9	31	25	26
Queen's Park Rangers	25	7	8	10	25	31	22
Charlton Athletic ..	23	7	5	11	32	41	19
Gillingham	22	7	3	12	23	41	17
Orient	23	3	6	14	22	54	12
Watford	22	3	5	14	23	61	11
Reading	22	4	2	16	15	54	10
Brentford	25	3	3	19	19	59	9

APPEARANCES

N. BROWN	20	BROLLY	7
FINNIESTON	17	D. EBANKS	6
LAWRENCE	17	D. JENNINGS	6
SHERWOOD	17	D. PERRY	5
G. WILKINS	16	LOCKE	3
B. BASON	15	D. OUNSWORTH	3
L. PARODI	15	C. HARRIS	2 (1)
S. POPE	15	J. MACKENZIE	2
D. LUCAS	14	R. STEER	1 (3)
PERKINS	14	S. McDONALD	1
PRICE	14	R. MCINTOSH	1
STANLEY	14	K. PEART	1
SPONG	13 (1)	T. PIKE	1
B. BOLTON	12 (2)	S. SHOULTS	1
P. SEES	12	J. WALTON	1
BRITTON	11	J. BARTLETT	— (1)
DAVIS	9		

Goalscorers: Finnieston 14, Stanley 7, Brolly 5, Britton 4, Bason 3, Lucas 3, Bolton 2, Mackenzie 2, Parodi 2, Perkins 2, Pople 2, Spong 2, Davis 1, Opponent 1. Total 50.

SEAT RESERVATIONS

PLEASE note that all reserved seats have been sold for our home games against Crystal Palace on April 8 and Newcastle United on April 22.

The only matches for which advance bookings are still available are against Sheffield United next Wednesday and the undated fixture with Stoke City.

Prices of reserved seats for home League matches are: £1.20 West Stand only (all £1.20 tickets in East Stand have been sold as Season Tickets); 80p East and West Stands.

Tickets are obtainable as follows:

You may write AT ANY TIME to the Box Office, stating number and price of seats required and enclosing correct remittance and return envelope.

You may call at the Box Office at any time in office hours—9.30 a.m.-4.30 p.m. Monday, Tuesday, Wednesday and Friday; 9.30 a.m.-12 noon Thursday. The Box Office is open on Saturday except during the period of the match being played and on First Team match days can handle tickets for other matches only from 9.30 a.m.-12 noon or from 5 p.m.-5.30 p.m.

NEXT HOME MATCHES

Wednesday, 29th March (7.30 p.m.)

SHEFFIELD UNITED

Football League

⊙

Saturday, 8th April (3 p.m.)

CRYSTAL PALACE

Football League (all Reserved Seats sold)

⊙

Saturday, 15th April (3 p.m.)

TOTTENHAM HOTSPUR

Football Combination

⊙

Saturday, 22nd April (3 p.m.)

NEWCASTLE UNITED

Football League (all Reserved Seats sold)

THE CHELSEA MAGAZINE

IF you haven't yet bought **The Chelsea Magazine**, there's still time.

It's this season's new-style Club Yearbook, with an all-colour cover and 32 pages packed with great contents.

There are more than 50 photographs . . . players' autographs . . . special features . . . charts, records, pen-pictures . . . all the facts and figures. . . .

You can buy **The Chelsea Magazine** here today—for only 20p.

PRE-MATCH SPIN

The address to write to is: Pete & Dave, Pre-Match Spin, Chelsea Football Club, Stamford Bridge Grounds, Fulham Road, London, S.W.6.

Records played here on match-days are supplied by "Musicland" and can be obtained from their branch at 44 Berwick Street, London, W.1.

TODAY'S HALF-TIMES

FIRST DIVISION

A	Everton v. Wolves
B	Leeds v. Arsenal
C	Leicester v. Ipswich
D	Manchester Utd. v. Crystal P.
E	Newcastle v. Manchester City
F	Nott'm. Forest v. Coventry
G	Southampton v. Liverpool
H	Stoke v. Derby
J	Tottenham v. Sheffield United
K	West Brom. v. Huddersfield

SECOND DIVISION

L	Birmingham v. Luton
M	Burnley v. Fulham
N	Middlesbro' v. Charlton
O	Millwall v. Oxford United
P	Norwich v. Blackpool
R	Preston v. Q.P.R.
S	Sheffield Wed. v. Cardiff
T	Swindon v. Sunderland

THIRD DIVISION

U	Brighton v. Aston Villa
V	Rochdale v. Bournemouth
W	Shrewsbury v. Notts County

KEEP OFF THE PITCH

Spectators are reminded to keep off the pitch at all times.