



LEAGUE
CHAMPIONS 1954-55

C
H
E
L
S
E
A

**FOOTBALL
CLUB**

**Stamford
Bridge
Grounds**
LONDON SW6

*F.A. CUP - SIXTH ROUND
SEASON 1964-65*

**Saturday,
6th March, 1965**

**CHELSEA
v
PETERBOROUGH
UNITED**

KICK-OFF 3 p.m.

OFFICIAL PROGRAMME — SIXPENCE



THE CHELSEA FOOTBALL & ATHLETIC CO. LTD.

FOUNDED 1905

CLUB COLOURS:

Shirts: Royal Blue.

Shorts: Royal Blue.

Stockings: White.

Registered Address:

STAMFORD BRIDGE GROUNDS, FULHAM ROAD, LONDON S.W.6.
(FUL 5545)

PRESIDENT: The Right Hon. Earl Cadogan, M.C.

BOARD OF DIRECTORS:

J. H. Mears (*Chairman*), C. J. Pratt (*Vice-Chairman*)
L. R. Withey, J. B. Mears, Viscount Chelsea, L. J. Mears

SECRETARY: J. Battersby

TEAM MANAGER: T. Docherty

TRAINER: H. Medhurst

HON. MEDICAL OFFICER

Dr. P. S. Boyne, M.B., B.S.(Lond.), M.R.C.S., L.R.C.P.



League
Champions 1955



F.A. Youth Cup
1960 and 1961

The Talk of Stamford Bridge

FOR the second time this season, we welcome new Cup opponents from Northamptonshire. Two months ago we set out on the road for Wembley against Northampton Town and today, three Rounds later, we meet Peterborough United from that same county. Once again, they have shown that their League label means nothing in the knock-out business—Peterborough built a “giant-killer” reputation long before they were admitted to the Football League — and, in reaching the Sixth Round this season for the first time, they achieved their most prized scalp of all when they dismissed Arsenal five weeks ago. That in itself is sufficient to warn us against over-confidence.



At the same time, we cannot but feel optimistic about reaching the semi-Finals for the seventh time in Chelsea history. The last occasion was in 1952, and from only one of those six did we go on to the Final. By winning today we would make a bit of “local” history, for in none of those past excursions to the semi-Finals did we play every match in London as we have done this season.

It could be that history will also be made on a national scale today, with Manchester United, Leeds and ourselves all seeking a place in the semi-Finals to maintain this season's tremendous three-club pursuit of the League Championship and F.A. Cup “double”.

The loss of both points to Nottingham Forest in our last home game was lightened somewhat by Manchester United's mid-week defeat at Sunderland, and last Saturday we came back to winning form at Stoke. Thus, for the fifth time in five this season, we answered defeat with victory in the next match. It was also our fifth League "double" of the season (the others were against Wolves, Fulham, Arsenal and Blackburn) and afterwards the team moved on to Blackpool for four days.

* * *

Our First Division match against Tottenham, which should have been played here today, has been re-arranged for Wednesday next, kick-off 7.30 p.m. provided we are not engaged in a Cup replay at Peterborough. After which our next stop is at Old Trafford next Saturday.

* * *

As well as a new receipts record for Stamford Bridge, we set up a record for Chelsea programme sales when we played Spurs here in the Fifth Round a fortnight ago. The total of 54,750 for a crowd of 63,205 represented a sale of 87%, and we believed this to be both the highest number of programmes sold and the highest percentage for any club match outside the F.A. Cup Final.

* * *

Honours: Bert Murray (England) and George Graham (Scotland) won further Under-23 honours in the match drawn 0-0 at Aberdeen on Wednesday of last week. Last Saturday, two of our juniors, goalkeeper Ray Willis and left-back Bobby Evans, played for England in the Youth International at Inverness, where Scotland won 2-1.

* * *

Today, military music is provided for your entertainment by the Band of the Junior Leaders Regiment Royal Engineers, who appear by kind permission of their Commanding Officer, Lt.-Col. B. C. Elgood, M.B.E., R.E. The band has played frequently at Stamford Bridge since 1957.

* * *

Transferred: Outside-left Tommy Knox, who joined us from East Stirling in June 1962, has been transferred to Newcastle United. We wish him a successful future with his new club.

FRONT COVER SHOT

THE moment when we came out of the bag against Peterborough United in the draw for today's Sixth Round. On the left Mr. David Wiseman, Chairman of the F.A. Cup Committee, has picked mahogany ball No. 7, representing Chelsea, and our own Chairman, Mr. J. H. Mears, Chairman of the Football Association, holds ball No. 3, indicating Peterborough.

Will it prove a "lucky 7" for Chelsea? The next 90 minutes will give the answer, and decide whether we go into the famous green bag again for Monday's semi-Final pairings . . . the last and most important F.A. Cup draw of the season.

CHELSEA'S HOME ATTENDANCES 1964-65

Football League

Aston Villa	30,389
Sunderland	46,710
Sheffield Wednesday	31,973
Fulham	41,472
Leeds United	38,006
Manchester United	60,769
Blackburn Rovers	34,913
Stoke City	28,650
Burnley	29,040
Everton	30,716
West Ham United	44,204
Wolverhampton Wndrs.	20,952
Blackpool	30,581
Leicester City	28,344
Arsenal	46,798
Nottingham Forest... ..	29,038

TOTAL: 572,555

Average home League crowd: 35,784.
(Total for the first 16 home matches last season was 522,750; average 32,671).

F.A. Cup

Northampton Town	44,335
(Receipts £10,003)	
Tottenham Hotspur	63,205
(Receipts £19,606)	

THE GOAL THAT KNOCKED OUT SPURS —



Barry Bridges scores the goal that beat Spurs and put us into today's Sixth Round.



Peter Bonetti leaves his line and checks a threatened breakthrough by Greaves.

AND THE SAVES THAT KEPT THEM OUT



Up and over — Bonetti turns an awkward centre by Robertson over the bar.



Now down to earth — Bonetti dives and smothers the ball at Gilzean's feet.

IN OFF THE POST

Your letters should be of not more than 150 words and addressed to "In off the Post", Chelsea F.C., Fulham Road, London, S.W.6.



LETTERS OPENED BY PROGRAMME EDITOR, ALBERT SEWELL

CUP FINAL TICKETS . . .

I MISS occasional games through being away from London, but our season-tickets are no guarantee for Cup Final tickets as per the programme coupon idea.

As my son and I, like hundreds of supporters, travel as far as Sunderland, Blackpool, Manchester, etc., as often as permitted, should not this have some influence on our chances?

Bob Lawson.

Blackwater,
Hampshire.

● *Season-tickets are a much better guarantee for Cup Final tickets than programme vouchers if we are playing at Wembley!*

IS IT A CUP RECORD?

IF Chelsea and Crystal Palace were to be drawn together in one of the F.A. Cup semi-Finals and Chelsea were the eventual winners of the Cup, surely they would be the first team ever to play every single round in London?

John R. Marsden-White.

St. Thomas More Youth Club,
Cadogan Street, Chelsea,
London, S.W.3

● *No, sir. When Arsenal won the Cup in 1950, they played every tie in London, with home matches in Rounds 3-6, two semi-Finals against Chelsea at Tottenham, and the Final against Liverpool at Wembley.*

OUR CHINESE FANS

WE are two soccer-crazy Chinese boys from Singapore and have written to tell you that we are ardent fans of your club, Chelsea.

To us, the 1964-65 season is a very happy one because of Chelsea's dynamic form and high position in the English First Division. With this wonderful performance Chelsea can be certain of more top honours.

You can always be assured of our loyal support even though we are thousands of miles from England. We think Chelsea Football Club is one of the greatest club teams in the world and we are sure many fans in Britain think likewise.

Right now, our one wish is to see your great club in action, but I guess this is very impossible.

James and Johnny Yeo.

207, Strathmore Avenue,
Queenstown, Singapore 3,
Malaysia.

● *Perhaps not as impossible as you think, boys. There is a chance we may play a match in Singapore in May en route to the proposed tour of Australia.*

HIS MASCOT MODEL

WHILE I was on holiday in Wales, I saw a model of a footballer painted in Chelsea's colours, so I bought it and Chelsea seem to have done very well since.

Every time I break this model Chelsea seem to lose on the Saturday, so I have put the model in a place where it can't get broken. Hope this works, don't you?

Chelsea for the TREBLE!

J. Smith (14).

32, Grover House,
Vauxhall Street, S.E.11

● *Good lad — we hope it's under lock and key this afternoon!*

CUP SECRET REVEALED

COULD you please tell me whether the Cup pictured on the front cover of the Chelsea versus Leicester programme is the real thing, an imitation or a copy?

G. Parley.

162, Wiltshire Close,
Chelsea, S.W.3.

● *It was a picture of "the real thing" superimposed on a dressing-room photograph of Peter Bonetti, Barry Bridges, Ron Harris and John Mortimore.*

A CHELSEA VERSE

I RESPECTFULLY contribute the following verse, which I trust you may find interesting:

Stamford Bridge,
Renowned for Sport's Fame,
Is the highlight now
of the soccer game;
A youthful side,
so eager with zest,
Must surely now,
rank with the best.
Whatever the "Doc"
injects into his team,
It's a healthy prescription,
to make them all beam!
This Chelsea side,
to all it would seem,
Is the finest yet
that's ever been seen.

With best wishes for continued success.

J. W. Knapton.

55, Kynaston Road,
Orpington, Kent.

TAKING STOCK

I FULLY understand what prompts Leslie A. Semmens (Feb. 6 programme) to say that lack of dynamic personalities is the reason for moderate gates, but in fairness let us take stock of what we have got.

Remember the fantastic offers made for any permutation of our wonderful defence to maintain the flow of the Brain Drain to White Hart Lane.

Our half-backs would perform with distinction in any company, club or national, and whilst abroad I heard two of our forwards spoken of with the utmost

respect by red-hot Man. Utd. and West Ham supporters.

Most of our team are only lads, but the finest in the land. Maturity will come inevitably, after all, Rome, Mackay and Blanchflower were not built in a day.

Atmosphere is what is badly needed at the "Bridge"; therefore acoustics must come *before anything else*. Yes, even before facilities and comfort. Just remember the roar our supporters gave this season at the more compact grounds at Highbury, Upton Park and White Hart Lane.

So we know the support is there, but it is lost in the void of the "Bridge". As for the team, thanks, Tommy Docherty.

Bill Baker.

Flat 63,
153, Queenstown Road,
Battersea, S.W.8

WELL DONE, MR. CHAIRMAN

CONGRATULATIONS to Mr. Mears for his stand against B.B.C. Television. It's high time these gentlemen realised that this Chelsea is no joke and should not be treated as such.

May the lads go on to win the Cup and the League — then we can give them all a good laugh!

S. H. Chilcott.

42, Airedale Road,
Balham, S.W.12

DYNAMOS — MOSCOW, NOT DOCHERTY'S

COULD you please tell me the score and the team when Chelsea played Moscow Dynamos in November 1945, when it was estimated that there were 100,000 people in the ground?

Stephen Walsh (Age 13).

19, Budleigh House,
Friary Road,
Peckham, S.E.15

● *Score: Chelsea 3 (Goulden, Williams, Lawton), Moscow Dynamos 3.*

Team: Woodley; Tennant, Bacuzzi (Fulham); Russell, Harris, Taylor (Fulham); Buchanan, Williams, Lawton, Goulden, Bain.

(Continued on page 14)

ABOUT OUR VISITORS

PETERBOROUGH United have fully justified the confidence shown in them when they were elected to the Football League in 1960. They topped the Fourth Division in their first season with a record total of goals (134 in 46 matches) and have had no difficulty holding their own in Division III.

Mr. Gordon Clark, assistant-manager with Sheffield United before taking over as manager of Peterborough last April in succession to Jack Fairbrother, has frequently rung the team changes this season, and nobody has an ever-present record.

Goalkeeper Willie Duff won Scottish Under-23 international honours with Hibernian, from whom he joined Charlton in 1956. He moved to Peterborough in May 1963.

Right-back Ron Cooper, a local product, has shown considerable versatility since making his debut at right-half last season. He has filled both wing-half positions, and switched to full-back last November.

One of the many additions to Peterborough's playing staff last summer was left-back Graham Birks, from Sheffield Wednesday. In four years as a professional at Hillsborough he had made only four senior appearances, all of them in 1962-63.

Capped by Wales in 16 full internationals while with Aston Villa, Vic Crowe joined Villa in 1952, making over 300 League appearances for them. A native of Abercynon in South Wales, he joined Peterborough last July and has been an inspiring captain.

Another Welshman is centre-half Frank Rankmore. While with Cardiff City he gained Welsh Under-23 recognition, then moved to Peterborough in August 1963.

Harry Orr left Belfast Distillery for Sheffield United in October 1958, together with utility forward Denis Shiels. Both of them made only occasional appearances in the Sheffield team, however, and moved to Peterborough together last July.

Now with his fifth League club, Bolton-born right-winger Ron Barnes began his career with Blackpool, and had spells with Rochdale, Wrexham and Norwich City before signing for Peterborough last June.

Although he spent five years as a professional with Huddersfield Town, Eire-born Oliver Conmy made only three League appearances for them before joining Peterborough nine months ago.

Centre-forward Derek Dougan is handsomely repaying the big fee involved when Peterborough signed him from Aston Villa in June 1963. Belfast-born and capped by Ireland on nine occasions, Dougan was with Distillery, Portsmouth and Blackburn Rovers (for whom he played in the 1960 Cup Final), before joining Villa in 1961. His goals this season include F.A. Cup hat-tricks against Salisbury and Chesterfield.

The scorer of Peterborough's two goals in the replay win at Swansea last week was Peter Deakin, another of last summer's recruits. He joined them in June from Bolton Wanderers, and combines football with a school-teaching post.

Outside-left Peter McNamee, now in his twelfth year with Peterborough, is the last surviving player from their non-League days. A Scot from Glasgow, he was signed from Junior football in 1953.

HOW THEY STAND IN DIVISION III

	Leading Positions												Goals	Pts
	HOME			AWAY			Goals			Goals				
	P	W	D	L	F	A	W	D	L	F	A	F	A	Pts
Hull City	35	11	4	3	42	19	8	4	5	31	22	46		
Gillingham	35	14	4	0	40	8	5	3	9	20	29	45		
Mansfield	34	11	3	2	39	20	6	6	6	30	29	43		
Carlisle	35	9	4	3	30	15	8	5	6	24	24	43		
Bristol Rov.	35	12	3	2	45	17	3	8	7	23	32	41		
Brentford	33	13	3	1	43	16	4	3	9	21	28	40		
Bristol City	34	9	5	3	40	16	6	4	7	29	32	39		
Grimsby	32	9	7	0	30	16	3	6	7	22	29	37		
P'BRO'	32	11	2	3	46	26	5	2	9	18	30	36		

PETERBOROUGH'S GOALSCORERS

League: Smith (now Crystal Palace) 14, Deakin 12, Dougan 9, McNamee 7, Crawford 5, Shiels 4, Conmy 3, Moulden 3, Barnes 2, Wright 2, Singleton 1, Opponents 2. Total 64.

F.A. Cup: Dougan 7, Deakin 6, McNamee 2, Barnes 1, Crowe 1. Total 17.

League Cup: Nil.

CHELSEA

Colours—Shirts: Royal Blue. Shorts: Royal Blue. Stockings: White

(Goal)

BONETTI

1

(Right-back)

HINTON

2

(Left-back)

McCREADIE

3

(Right-half)

HOLLINS

4

(Centre-half)

MORTIMORE

5

(Left-half)

HARRIS

6

(Outside-right)

MURRAY

7

(Inside-right)

GRAHAM

8

(Centre-forward)

BRIDGES

9

(Captain)

(Inside-left)

VENABLES

10

(Outside-left)

TAMBLING

11

Referee:

Mr. J. PARKINSON

(Blackburn)



Linesmen:

Mr. F. J. BRICKNELL

(Exminster)

(Red Flag)

Mr. D. R. G. NIPPARD

(Bournemouth)

(Yellow Flag)

11

McNAMEE

(Outside-left)

10

DEAKIN

(Inside-left)

9

DOUGAN

(Centre-forward)

8

CONMY

(Inside-right)

7

BARNES

(Outside-right)

6

ORR

(Left-half)

5

RANKMORE

(Centre-half)

4

CROWE

(Right-half)

(Captain)

3

BIRKS or CRAWFORD

(Left-back)

2

COOPER or CRAWFORD

(Right-back)

1

DUFF

(Goal)

PETERBOROUGH UNITED

Colours—Shirts: Royal Blue, White Facings. Shorts: White with Blue Stripe.

Stockings: Blue with White Tops

(Playing today in Red and White Shirts)

9

HE'S IN CHARGE

TODAY'S referee, Mr. Jack Parkinson, 44-year-old production engineer from Blackburn, is himself a former professional footballer.

He played as an amateur for Blackburn Rovers and signed professional with Darwen and Clitheroe, in the Lancashire Combination.

When injury ended his playing career Mr. Parkinson turned to refereeing and, after officiating in the Lancashire Combination and Central League, progressed to the Football League list in 1958. His hobbies: Model boats and interior decorating.

TRAINS FOR MANCHESTER

**Saturday next, 13th March (3 p.m.)
Manchester United v. Chelsea**

Outward

Dep. St. Pancras 8.25 a.m.
Arr. Manchester Central ... 12.51 p.m.

Homeward

Dep. Manchester Central ... 6.00 p.m.
Arr. St. Pancras 10.27 p.m.

Fare 40/- (Children under 14, 20/-)

United's ground is three miles from the city centre. There is a frequent bus service; trains run at approximately every 20 minutes from Oxford Road Station to Old Trafford.

HOW PETERBOROUGH REACHED ROUND SIX FOR THE FIRST TIME

First Round	Salisbury (h)...	...	5-1
Second Round	Queen's Park R. (a)	3-3
Replay	Queen's Park R. (h)	2-1
Third Round	Chesterfield (a)	3-0
Fourth Round	Arsenal (h)	2-1
Fifth Round	Swansea Town (h)	0-0
Replay	Swansea Town (a)	2-0

SEAT RESERVATIONS

Prices of reserved seats at home League matches are 7/6, 10/-, 12/6 and 15/-. Applications (by post only) will be accepted one calendar month in advance, and should be accompanied by remittance and stamped addressed envelope.

It will be appreciated if separate application is made for each match.

Seats may be purchased, if still available, by personal application at the club offices in the week preceding the match.

AWAY MATCH BOOKINGS

For the guidance of supporters planning to travel to away League matches, the following is the procedure by postal application for obtaining Stand tickets from clubs we shall be visiting in the near future:—

Manchester United (next Saturday): Seats 8/6, 10/-. Apply: The Secretary, Manchester United F.C., Old Trafford, Manchester 16.

Everton (Friday night, March 26 — provisional): Seats 8/-. Apply: The Secretary, Everton F.C., Goodison Park, Liverpool 4.

(Note: This fixture will have to be re-arranged if we are playing in the F.A. Cup semi-Finals on March 27.)

West Ham United (April 10): No advance booking. Seats 7/-, 9/- and 11/-, all pay at the turnstile.

Commentaries on all first team matches are relayed to local hospitals by members of Chelsea TOC H.

NOTICE TO SPECTATORS

We draw the attention of spectators to our Ground Regulations which are posted at the turnstiles and in other parts of the ground.

We must emphasise that anyone apprehended on the pitch or causing a disturbance in the crowd will be removed from the stadium.

PLEASE KEEP OFF THE PITCH AT ALL TIMES.

The new sound equipment at Stamford Bridge was installed by Magneta (BVC) Limited, Ackmar Works, Ackmar Road, London, SW6

Tables, Appearances & Goalscorers

(Up to and including Saturday, 27th February)

FOOTBALL LEAGUE—DIVISION I

	HOME			Goals AWAY			Goals			Pts		
	P	W	D	L	F	A	W	D	L		F	A
CHELSEA	31	11	1	4	33	15	9	5	1	34	16	46
Leeds Utd.	31	11	3	1	37	18	8	4	4	20	20	45
Man. Utd.	31	10	4	1	35	11	7	5	4	26	21	43
Nottm. For.	32	8	5	3	38	29	6	4	6	22	27	37
Tottenham	32	13	3	0	40	11	1	4	11	19	41	35
Everton	30	5	8	2	27	18	6	4	5	23	25	34
Liverpool	30	9	4	3	33	25	4	4	6	19	22	34
Arsenal	33	9	3	5	34	28	6	1	9	24	34	34
West Ham	31	10	2	4	33	17	4	2	9	28	31	32
Sheff. Wed.	30	8	4	3	27	14	3	6	6	18	24	32
Blackburn	31	9	1	5	35	22	4	5	7	27	32	32
Sheff. Utd.	32	6	5	5	27	20	5	4	7	17	26	31
Burnley	32	6	7	3	26	21	5	0	11	25	35	29
Leicester	31	7	5	4	39	31	1	7	7	22	33	28
Stoke City	30	6	3	6	26	22	4	5	6	21	28	28
West Brom.	30	6	4	5	29	21	2	6	7	16	25	26
Fulham	32	8	2	6	35	26	1	6	9	13	34	26
Blackpool	31	5	5	5	27	23	3	4	9	23	37	25
Sunderland	30	7	6	2	30	21	1	1	13	12	36	23
Birmingham	31	5	6	5	24	27	2	3	10	24	40	23
Aston Villa	28	7	1	5	20	16	2	1	12	14	46	20
Wolves	29	5	1	8	20	24	1	2	12	13	42	15

FOOTBALL COMBINATION DIV. I

	P	W	D	L	F	A	Pts
CHELSEA ...	26	18	4	4	77	27	40
West Ham United ...	26	17	2	7	67	35	36
Tottenham Hotspur	25	15	4	6	75	35	34
Nottingham Forest	27	13	6	8	52	42	32
Peterborough Utd.	23	13	4	6	58	42	30
Arsenal ...	25	13	3	9	61	44	29
Cardiff City ...	26	12	5	9	51	45	29
Leicester City ...	24	11	3	10	51	51	25
Norwich City ...	26	10	5	11	35	41	25
Portsmouth ...	26	10	4	12	55	63	24
Northampton Town	27	10	4	13	49	61	24
Fulham ...	27	10	3	14	45	56	23
Crystal Palace ...	24	9	3	12	42	40	21
Shrewsbury Town ...	26	7	6	13	49	72	20
Plymouth Argyle ...	25	8	3	14	38	50	19
Ipswich Town ...	25	6	5	14	36	65	17
Mansfield Town ...	23	5	5	13	45	64	15
Colchester United ...	22	4	3	15	31	79	11

SOUTH-EAST COUNTIES LEAGUE

(Senior Division)

	P	W	D	L	F	A	Pts
Arsenal ...	23	15	7	1	67	22	37
CHELSEA ...	22	17	2	3	89	33	36
Queen's Park R. ...	23	17	2	4	77	30	36
Fulham ...	25	17	1	7	68	37	35
West Ham ...	23	12	5	6	52	31	29
Tottenham ...	24	12	3	9	82	46	27
Brighton ...	22	11	2	9	48	53	24
Portsmouth ...	22	11	1	10	49	47	23
Millwall ...	23	10	1	12	57	48	21
Crystal Palace ...	24	8	2	14	47	65	18
Leyton Orient ...	21	7	3	11	38	63	17
Charlton Athletic ...	20	8	0	12	45	51	16
Bexley United ...	22	7	2	13	45	85	16
Watford ...	24	5	3	16	37	69	13
Brentford ...	25	4	2	19	39	85	10
Luton Town ...	23	3	2	18	37	112	8

APPEARANCES

FOOTBALL LEAGUE

BRIDGES	31	MORTIMORE	18
HARRIS (R.)	31	KNOX	13
HOLLINS	31	SHELLITO	12
BONETTI	30	HOUSEMAN	8
HINTON	30	BOYLE	3
MURRAY	30	WATSON	2
VENABLES	30	DUNN	1
McCREADIE	27	HARRIS (A.)	1
TAMBLING	22	McCALLIOG	1
GRAHAM	20		

Goalscorers: Graham 17, Bridges 16, Murray 11, Tambling 10, Venables 5, Hollins 2, McCalliog 2, Harris (R.) 1, McCreddie 1, Mortimore 1, Shellito 1. Total 67.

F.A. CUP

BONETTI	3	MURRAY	3
BRIDGES	3	TAMBLING	3
GRAHAM	3	VENABLES	3
HARRIS (R.)	3	BOYLE	1
HINTON	3	McCREADIE	1
HOLLINS	3	UPTON	1
MORTIMORE	3		

Goalscorers: Bridges 3, Tambling 2, Opponent 1. Total 6.

FOOTBALL LEAGUE CUP

BONETTI	7	HOUSEMAN	3
MORTIMORE	7	McCREADIE	3
GRAHAM	6	UPTON	3
HOLLINS	5	VENABLES	3
McCALLIOG	5	WATSON	3
TAMBLING	5	BOYLE	2
BRIDGES	4	HARRIS (A.)	2
HARRIS, R.	4	BROWN	1
HINTON	4	KNOX	1
MURRAY	4	OSGOOD	1
FASCIONE	3	SHELLITO	1

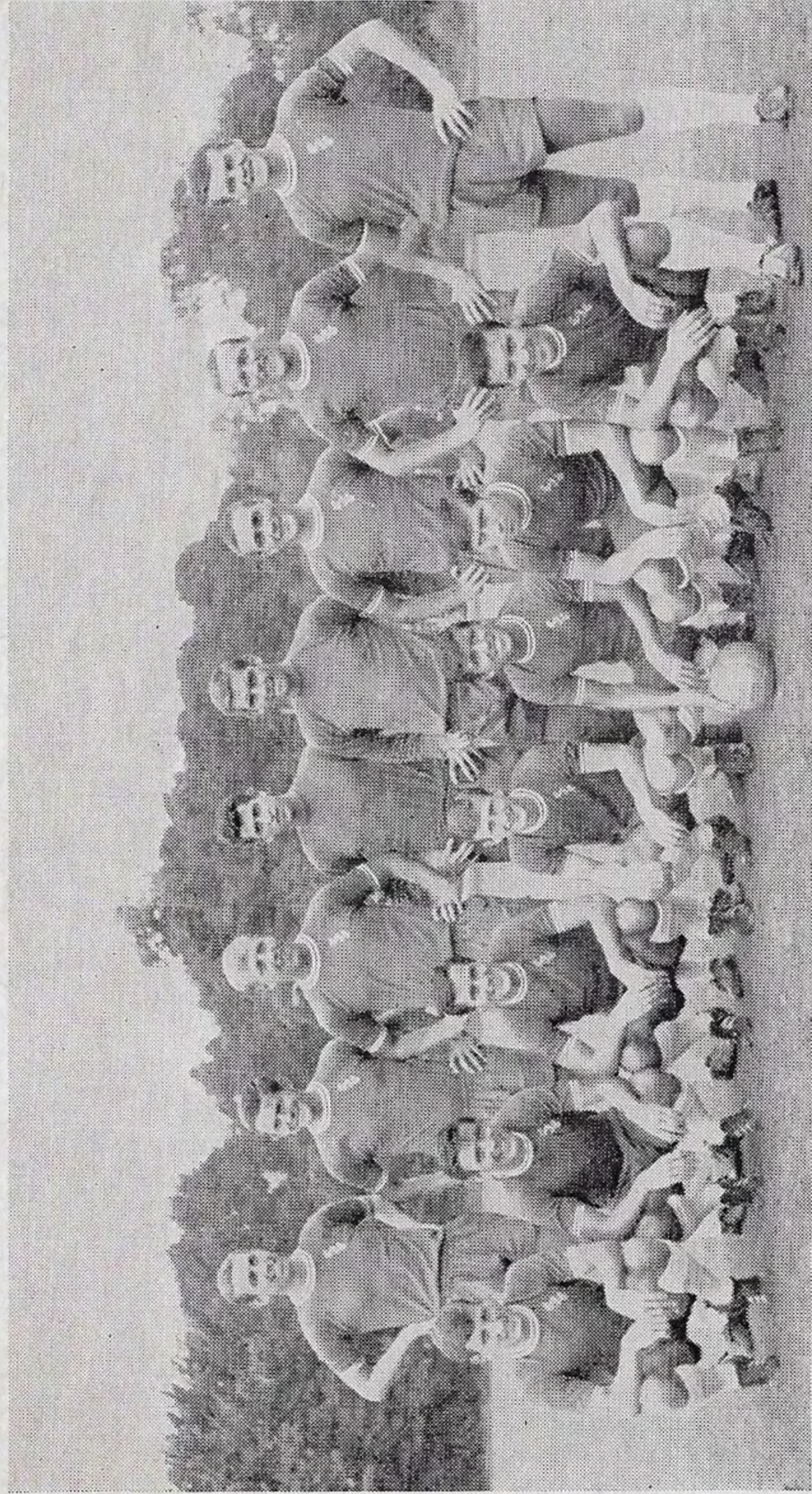
Goalscorers: Tambling 5, Graham 4, Bridges 3, Osgood 2, Boyle 1, Brown 1, Harris (A.) 1, McCalliog 1. Total 18.

FOOTBALL COMBINATION

DUNN	25	BROWN	7
FASCIONE	25	McCOLL	7
YOUNG	25	P. JENKINS	6
WATSON	23	SINCLAIR	5
OSGOOD	21	HARMER	4
McCALLIOG	17	GRAHAM	3
GOULD	16	MORTIMORE	3
HOUSEMAN	16	MULHOLLAND	3
UPTON	15	TAMBLING	3
BOYLE	14	M. VOWLES	3
HARRIS (A.)	11	HENDERSON	2
KNOX	11	HOWARTH	1
WILKS	10	R. WILLIS	1
JONES	9		

Goalscorers: Fascione 19, Osgood 15, Brown 7, Houseman 5, Knox 4, Mulholland 4, Tambling 4, Wilks 4, Young 4, McCalliog 3, Upton 2, Gould 1, Graham 1, Mortimore 1, Vowles 1, Opponents 2. Total 77.

F.A. CUP SPECIAL IS IT OUR YEAR FOR WEMBLEY?



CHELSEA 1964-65

Back row: M. Hinton, J. Hollins, K. Shellito, P. Bonetti, J. Dunn, R. Harris, A. Harris (now Coventry), E. McCreadie.
Front row: A. Murray, R. Tambling, G. Graham, P. Houseman, T. Venables, D. Brown (now Swindon), B. Bridges.

IN ROUND SIX FOR FIRST TIME

F.A. CUP SPECIAL



PETERBOROUGH UNITED 1964-65

*Back row: B. Wright, O. Hopkins, F. Rankmore, W. Duff, K. Smith (now Crystal Palace), T. Singleton.
Front row: I. Crawford, P. Deakin, D. Dougan, O. Conmy, P. McNamee.
Insets: V. Crowe, R. Barnes, G. Birks, H. Orr.*

MATCH SUMMARIES

F.A. CUP—FIFTH ROUND

Saturday, 20th February.

Beat TOTTENHAM HOTSPUR (Home) 1-0. Half-time: 1-0.

Chelsea—Bonetti; Hinton, McCreadie; Hollins, Mortimore, Harris; Murray, Graham, Bridges, Venables, Tambling.

Scorer: Bridges.

Tottenham—Brown; Knowles, Henry; Mullery, Norman, Marchi; Robertson, Greaves, Gilzean, Clayton, Jones.

Referee: Mr. L. J. Hamer (Bolton).

Attendance: 63,205. Receipts: £19,606 (Record for Stamford Bridge).

FOOTBALL LEAGUE

Monday, 22nd February.

Lost to NOTTINGHAM FOREST (Home) 0-1. Half-time: 0-1.

Chelsea—Bonetti; Hinton (M.), McCreadie; Hollins, Mortimore, Harris; Murray, Houseman, Bridges, Venables, Tambling.

Nottingham Forest—Grummitt; Hindley, Mochan; Newton, McKinlay, Whitefoot; Moore, Addison, Wignall, Barnwell, Hinton (A.).

Scorer: Barnwell.

Referee: Mr. N. C. H. Burtenshaw (Great Yarmouth).

Attendance: 29,038.

Saturday, 27th February.

Beat STOKE CITY (Away) 2-0. Half-time: 1-0.

Stoke City—Leslie; Asprey, Allen; Setters, Kinnell, Skeels; Woodward, Viollet, Ritchie, McIlroy, Jones.

Chelsea—Bonetti; Hinton, Harris; Hollins, Mortimore, Boyle; Murray, Graham, Bridges, Venables, Tambling.

Scorers: Murray, Graham.

Referee: Mr. K. J. Seddon (Southport).

Attendance: 27,965.

FOOTBALL COMBINATION

Saturday, 20th February.

Beat WEST HAM UNITED (Away) 2-1.

Team: Dunn; Jones, Watson; Gould, Young, Upton; Fascione, McColl, Osgood, McCalliog, Houseman.

Scorers: Houseman, Opponent own goal.

Saturday, 27th February.

Beat PLYMOUTH ARGYLE (Home) 2-1.

Team: Dunn; Jones, Watson; Sinclair, Young, Gould; Fascione, McCalliog, Osgood, McColl, Houseman.

Scorers: Fascione, Houseman.

SOUTH-EAST COUNTIES LEAGUE (Senior Division)

Saturday, 27th February.

Beat WATFORD (Home—Hendon) 5-1.

Team: W. Snasdell; Henderson, P. Jenkins; K. Brewer, Thomson, F. Conboy; M. Vowles, Wosahlo, Wilks, B. Lloyd, Smart.

Scorers: Wosahlo 3, Vowles, Lloyd.

SOUTH-EAST COUNTIES CUP (Junior Division)

Saturday, 27th February.

Lost to MILLWALL (Away) 1-4.

Team: H. Haggis; V. Coates, R. Kavanagh; H. Wingrove, R. Howlett, P. Fry; T. Waughman, M. Tickle, D. Shepherd, J. Hudson, B. Dye.

Scorer: Fry.

These Matches Will Decide THE LEAGUE CHAMPIONSHIP

CUP fever runs high today at the quarter-Final venues, but next week it's back to Championship thoughts and action (provided they are clear of replays) for the clubs at the head of the First Division: Leeds United, Manchester United and ourselves.

The remaining League programme for the "big three" is as follows:—

CHELSEA (11)

Home (5): Tottenham, Sheffield United, Birmingham, Liverpool, West Bromwich Albion.

Away (6): Manchester United, Everton, West Ham, Liverpool, Burnley, Blackpool.

MANCHESTER UNITED (11)

Home (6): Chelsea, Blackpool, Arsenal, Liverpool, Leicester, Fulham.

Away (5): Aston Villa, Sheffield Wednesday, Blackburn, Leeds, Birmingham.

LEEDS UNITED (11)

Home (6): Stoke, Burnley, Everton, West Ham, Manchester United, Sheffield Wednesday.

Away (5): Fulham, Birmingham, West Bromwich Albion, Sheffield Wednesday, Sheffield United.

IN OFF THE POST—continued

CLUB OR COUNTRY?

HOW much longer can the authorities who govern football and the critics refuse to accept that the vast bulk of public support is primarily for the Clubs? The result of representative games is to them of relatively little interest.

The Chelsea Club has a most excellent record this season. We supporters are most appreciative, and know that the club merits the 100% effort given by the players. Surely the team should not be unsettled for the sake of an "Under-23" International, the result of which means virtually nothing to your followers.

H. L. G. Heath.

"Heatherden,"

Templewood Lane,

Farnham Common, Bucks.

● *But we like our players to win International honours — and they like to win them, too.*

F.A. YOUTH CUP

Dec. 21	Q.P.R. (2nd Round)	...	Away	4	1
Jan. 21	Swindon T. (3rd Round)	...	Away	8	1
" 27	CHARLTON (4th Round)		HOME	2	0
Undated	Wolves (5th Round)	...	Away	

FIXTURES 1964-65

Football League Division I

© Copyright of the Football League

1964	Opponents	Venue	F. A.
Aug. 22	Wolverhampton W.	... Away	3 0
„ 26	ASTON VILLA...	... HOME	2 1
„ 29	SUNDERLAND	... HOME	3 1
„ 31	Aston Villa	... Away	2 2
Sept. 5	Leicester City	... Away	1 1
„ 9	SHEFF. WEDNESDAY	HOME	1 1
„ 12	FULHAM	... HOME	1 0
„ 16	Sheffield Wednesday	... Away	3 2
„ 19	LEEDS UNITED	... HOME	2 0
„ 26	Arsenal	... Away	3 1
„ 30	MANCHESTER UTD.	HOME	0 2
Oct. 3	BLACKBURN ROV.	... HOME	5 1
„ 10	Nottingham Forest	... Away	2 2
„ 17	STOKE CITY	... HOME	4 0
„ 24	Tottenham Hotspur	... Away	1 1
„ 31	BURNLEY	... HOME	0 1
Nov. 7	Sheffield United	... Away	2 0
„ 14	EVERTON	... HOME	5 1
„ 21	Birmingham City	... Away	6 1
„ 28	WEST HAM UTD.	... HOME	0 3
Dec. 5	West Bromwich Alb.	... Away	2 0
„ 12	WOLVERHAMPTON	... HOME	2 1
„ 19	Sunderland	... Away	0 3
„ 26	BLACKPOOL	... HOME	2 0
1965			
Jan. 2	LEICESTER CITY	... HOME	4 1
„ 9	(3) NORTHAMPTON T.	HOME	4 1
„ 16	Fulham	... Away	2 1
„ 23	Leeds United	... Away	2 2
„ 30	(4) West Ham United	... Away	1 0
Feb. 6	ARSENAL	... HOME	2 1
„ 13	Blackburn Rovers	... Away	3 0
„ 20	(5) TOTTENHAM H.	HOME	1 0
„ 22	NOTTINGHAM F.	... HOME	0 1
„ 27	Stoke City	... Away	2 0
Mar. 6	(6) PETERBOROUGH	... HOME
„ 10	TOTTENHAM H.	... HOME
„ 13	Manchester United	... Away
„ 20	SHEFFIELD UTD.	... HOME
„ 26	Everton	... Away
„ 27	(S.F.)
Apr. 3	BIRMINGHAM CITY	... HOME
„ 10	West Ham United	... Away
„ 16	LIVERPOOL	... HOME
„ 17	WEST BROMWICH A.	... HOME
„ 19	Liverpool	... Away
„ 24	Burnley	... Away
Undated	Blackpool	... Away
May 1	F.A. Cup Final

(3), (4), (5), (6) and (S.F.) refers to F.A. Cup round dates.

Football Combination Division I

1964	Opponents	Venue	F. A.
Aug. 22	CRYSTAL PALACE	... HOME	5 1
„ 31	Peterborough United	... Away	0 1
Sept. 5	LEICESTER CITY	... HOME	5 2
„ 12	Fulham	... Away	2 1
„ 26	MANSFIELD TOWN	... HOME	1 1
Oct. 3	Arsenal	... Away	1 2
„ 10	NORTHAMPTON T.	... HOME	8 2
„ 17	Shrewsbury Town	... Away	5 0
„ 24	WEST HAM UNITED	... HOME	3 1
„ 31	Plymouth Argyle	... Away	4 1
Nov. 7	IPSWICH TOWN	... HOME	7 1
„ 14	Cardiff City	... Away	0 0
„ 21	TOTTENHAM H.	... HOME	3 4
„ 28	Nottingham Forest	... Away	1 2
Dec. 5	SHREWSBURY T.	... HOME	6 0
„ 12	Crystal Palace	... Away	3 1
„ 19	PETERBOROUGH UTD.	... HOME	3 1
„ 26	Portsmouth	... Away	3 0

Your Record Entertainment

The records played at this match have been kindly provided by and can be obtained from Dawson Bros., 16 Fulham High Street, S.W.6.

1965

Jan. 2	Leicester City	... Away	3 1
„ 16	FULHAM	... HOME	1 1
„ 23	PORTSMOUTH...	... HOME	4 0
„ 30	NORWICH CITY	... HOME	2 0
Feb. 6	Mansfield Town	... Away	1 0
„ 13	ARSENAL	... HOME	2 2
„ 20	West Ham United	... Away	2 1
„ 27	PLYMOUTH ARGYLE	HOME	2 1
Mar. 6	Ipswich Town	... Away
„ 13	CARDIFF CITY	... HOME
„ 20	Tottenham Hotspur	... Away
„ 23	Northampton Town	... Away
„ 27	NOTTINGHAM FOR.	... HOME
Apr. 10	Colchester United	... Away
„ 24	Norwich City	... Away
Undated	COLCHESTER UTD.	... HOME

FOOTBALL LEAGUE CUP

Sept. 23	Birmingham C. (2nd Rnd.)	Away	3 0
Oct. 26	NOTTS CO. (3rd Rnd.)	HOME	4 0
Nov. 11	SWANSEA T. (4th Rnd.)	HOME	3 2
„ 25	Workington (5th Round)	Away	2 2
Dec. 16	WORKINGTON (Replay)	HOME	2 0
Jan. 20	Aston Villa (S.F., 1st leg)	Away	3 2
Feb. 10	A. VILLA (S.F., 2nd leg)	HOME	1 1
Mar. 15	LEICESTER (F., 1st leg)	HOME
Apr. 5	Leicester (F., 2nd leg)	Away

OTHER MATCH

Oct. 7	BENFICA (Lisbon)	... HOME	2 4
Feb. 16	W. Germany XI	... Duisburg	1 0

IF WE DRAW TODAY . . .

THE replay at Peterborough, on Wednesday next (7.30 p.m.), will be an *ALL-TICKET* match, with prices as follows: Stand tickets 10/- and 12/6; Enclosure 6/6; Ground 5/-.

Season-ticket holders (who *MUST* produce their books) should apply here tomorrow between 10 a.m. and 11 a.m. They will be guaranteed a ticket up to 11 a.m., after which the general sale of tickets will begin.

Trains: Outward—Depart King's Cross 4.05 p.m.,
Arrive Peterborough 5.19 p.m.
Homeward—Depart Peterborough 10.20 p.m.,
Arrive King's Cross 11.45 p.m.
Fare: 20/- (Children under 14, 10/-)

LEAGUE CUP FINAL

The first leg of our Football League Cup Final against Leicester City will be played at Stamford Bridge on Monday, 15th March (7.30 p.m.).

Prices will be as for a normal League fixture, with seats bookable in advance at 7/6, 10/-, 12/6 and 15/-.

Season-ticket holders are reminded that their usual tickets will not apply to this match. Those requiring their normal seats should make postal application, enclosing remittance and quoting their seat numbers.

NEXT HOME MATCHES

Wednesday, 10th March (7.30 p.m.)

TOTTENHAM HOTSPUR

FOOTBALL LEAGUE

(Provided no Chelsea F.A. Cup replay)

All reserved seats for this match have been sold.

★

Saturday, 13th March (3 p.m.)

CARDIFF CITY

FOOTBALL COMBINATION

★

Monday, 15th March (7.30 p.m.)

LEICESTER CITY

FOOTBALL LEAGUE CUP FINAL—1st LEG

Keep this Coupon

.....
*It may help you
to obtain a ticket for the
F.A. Cup Final*

13

HALF-TIME SCOREBOARD

F.A. CUP

A Crystal Pal.
Leeds Utd.

B Leicester
Liverpool

C Wolves
Man. Utd.

FIRST DIVISION

D Arsenal
Sheff. Utd.

E Blackburn
Everton

F Blackpool
Birmingham

G Sheff. Wed.
West Ham

H Sunderland
Nottm. For.

SECOND DIVISION

J Charlton A.
Bolton W.

K Leyton O.
Plymouth

L Norwich
Cardiff

M Portsmouth
Newcastle

N Swindon
North'pton

THIRD DIVISION

O Bournem'th
Q.P.R.

P Brentford
Workington

R Bristol Rov.
Hull City

S Oldham
Gillingham

FOURTH DIVISION

T Crewe
Millwall

U Doncaster
Brighton

FOOTBALL COMBINATION

V Ipswich
Chelsea