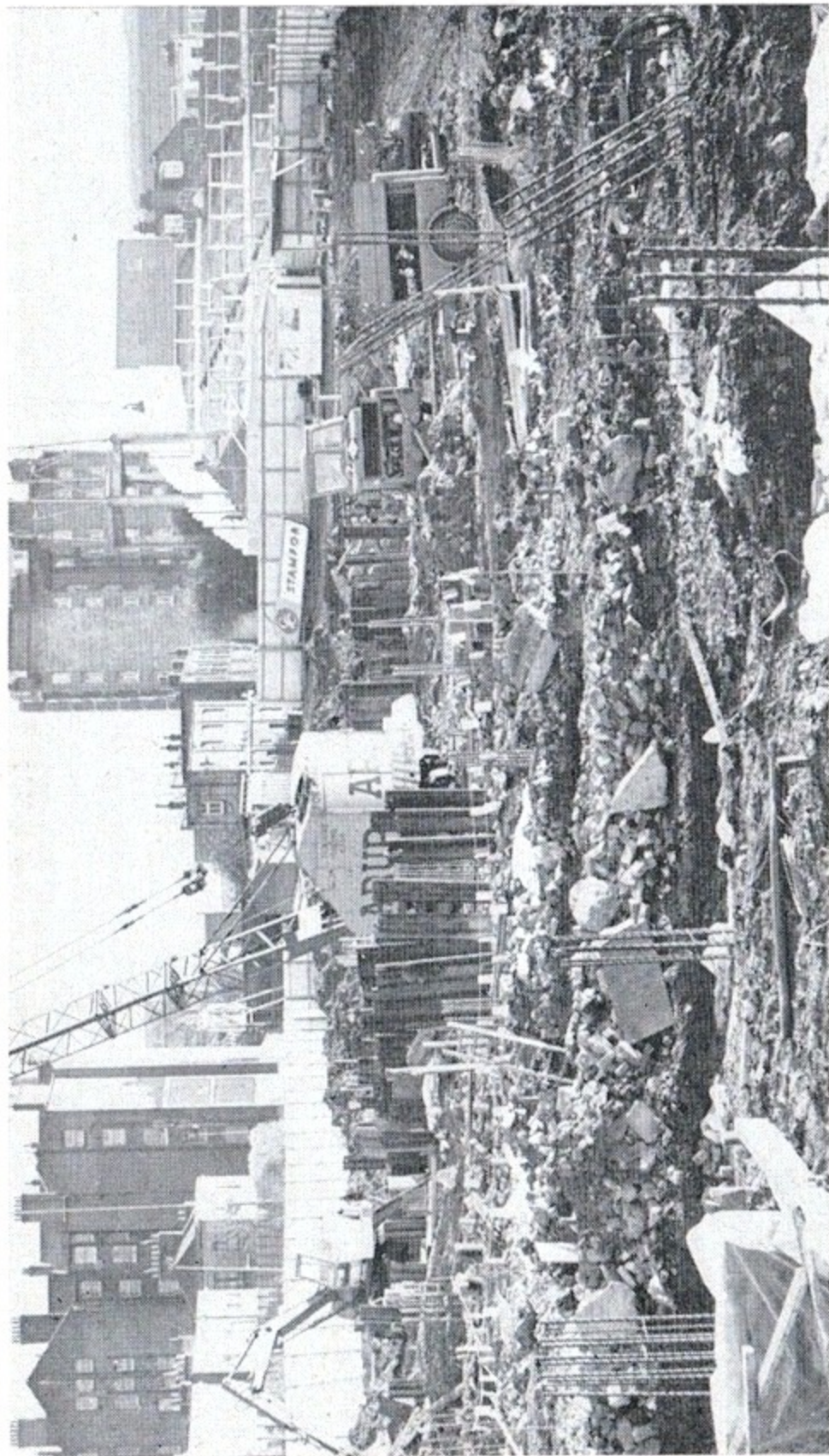


# Question & Answer on the New East Stand



The question we are asked more than any other by Chelsea fans just now is: How is the new East Stand progressing—what stage have the builders reached behind the fence that screens it from our view?

To laymen like ourselves, the work-site looks chaotic—as you will agree from this week's picture. But the experts know what it's all about, and here is a summary of this week's report from the Architects:

**A** Groundwork, foundations and underground services (sewers, gas mains, electric, etc.) have been completed, and the ground floor is about to be started. Early in the New Year, the new structure will begin to rise above the hoardings—pile-driving has been done and the steelwork is now being manufactured. Roof erection is planned for the Spring and everything is at present up to schedule.