



LEAGUE
CHAMPIONS
1954-55

Chelsea Football Club

Stamford Bridge Grounds, London SW6



FOOTBALL LEAGUE—DIVISION II

SEASON 1962-63

CHELSEA

v

CHARLTON ATHLETIC

Saturday, 25th August, 1962

Kick-off 3 p.m.

Official Programme

6^D

The right of admission to grounds
is reserved.

THE CHELSEA FOOTBALL & ATHLETIC CO. LTD.

FOUNDED 1905

CLUB COLOURS:

Shirts: Royal Blue (White Collars). Shorts: White,
Stockings: White; Red, White and Blue Tops.

Registered Address:

STAMFORD BRIDGE GROUNDS, FULHAM ROAD, LONDON, S.W.6.
(FUL 5545)

PRESIDENT: The Right Hon. Earl Cadogan, M.C.

BOARD OF DIRECTORS:

J. H. Mears (Chairman), C. J. Pratt (Vice-Chairman)
L. J. Mears, L. R. Withey, J. B. Mears.

SECRETARY: J. Battersby

TEAM MANAGER: T. Docherty

TRAINER: H. Medhurst



League
Champions 1955



F.A. Youth Cup
1960 and 1961

The Talk of Stamford Bridge

VICTORY against Rotherham United last Saturday started us off in the best possible way in an attempt to gain promotion back to the First Division at the first possible attempt. Since the war Sheffield Wednesday have won their way back in the first season no less than three times (in 1952, 1956 and 1959), while others to have done so are Manchester City (in 1951), Huddersfield Town (in 1953) and Aston Villa (in 1960).

* * *

By the nature of things the Second Division of the Football League is rather like a transit station, as it is composed of teams which have been relegated from the First Division or promoted from the Third Division. It is not surprising, therefore, to find that not one club has been in the Division in each of the post-war seasons. Swansea Town, who come to Stamford Bridge next month, have been in membership since their promotion in 1949 while our opponents last Saturday, Rotherham United, have been in the Division since 1951.

The game at Rotherham, as the 1-0 score suggests, was a hard one, with our new captain, Bobby Tambling, getting the only goal of the match with a header in the 30th minute. Our team showed four changes from the side with which we ended last season at Burnley. Peter Bonetti resumed in goal after his unlucky accident towards the end of last season, Barry Bridges who missed the last game returned to lead our attack, Albert Murray resumed on the right wing and Eddie McCreadie, our new signing from East Stirling, had his first League game in our colours at left-back.

* * *

Commentaries of all first team matches are relayed to local Hospitals by members of Chelsea
TOC H.

We take this opportunity of welcoming both Eddie McCreddie and Tommy Knox to Stamford Bridge and wish them a happy career in our colours. Both are from East Stirling.

* * *

Last Wednesday evening we beat Scunthorpe United 3-0 in our first home League game of the season. From the start of the game our forwards pressed hard and it was quickly obvious that under such pressure goals would have to come. Graham Moore scored in the 21st minute from a centre by Frank Blunstone and Barry Bridges added goals in the 37th and 80th minutes. When the other results came in we knew that we were at the top of the table—and for the first time since 1936 we had achieved victory in each of our first two League games of a season.

* * *

Next week our League team have two away matches. The return at Scunthorpe on Wednesday and a game against Stoke City on Saturday. Are we to have the pleasure of seeing the great Stanley Matthews in action again?—one can only hope so.

* * *

On the following Tuesday evening (4th September, kick-off 7.30 p.m.) we are sending our first team to play Wealdstone in a charity match in connection with the Royal Air Force Battle of Britain week. Although we may include one or two of our reserves, the intention is to play almost a full League team as our players have no mid-week game that week.

* * *

Our first home Combination League game is against Queen's Park Rangers on Wednesday afternoon, 5th September, and we take this chance to point out to our supporters that the kick-off times in this competition this season will be 3 p.m. or earlier in the middle of the season, as floodlights will not be used for these games.

* * *

It is customary for us to publish warnings about the activities of pickpockets on this ground and we would once again call your attention to this danger. In your own interests we ask you to be careful about your money and valuables. It is an obvious

precautionary measure not to bring more money to the ground than is necessary for your immediate expenditure and it would seem that the money is safer if carried loose in the pocket rather than in a wallet. The work of pickpockets is made easier in places where people gather and bunch together, such as teabars, and extra caution is needed in such places. Please heed this warning and thus make Stamford Bridge an unprofitable place for pickpockets to operate.

* * *

How would you like to be a referee? The need is great and many more referees are wanted for games in the London area. If you are interested Mr. A. E. D. Smith of 37 Castlenau, S.W.13, would be glad to hear from you and let you have full information of what you have to do to become 'the man with the whistle'.

* * *

Although the usual evening for our home games is Wednesday, our home League game against Southampton has been arranged for Monday evening, 10th September (kick-off 7.30 p.m.). Will our supporters please make a special note of this date and thus avoid disappointment by missing the game. Our old wing half, Cliff Huxford, is on the Southampton staff and we hope to see him make a return visit that evening. His younger brother, Colin, signed professional forms for us last season.

* * *

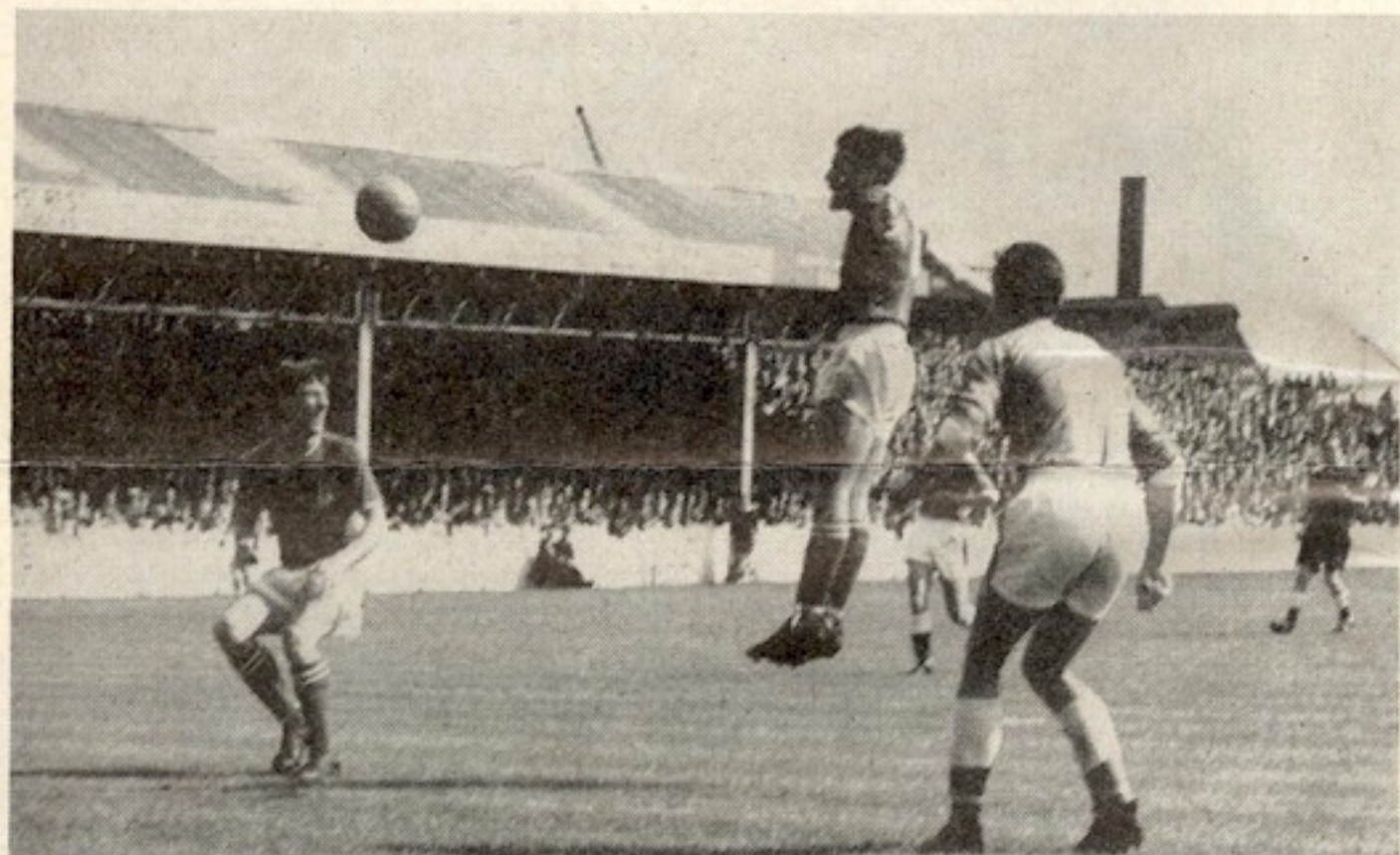
We have been drawn at home to Leyton Orient in the first round of this season's London F.A. Challenge Cup. The game will be played on Monday, 1st October (time of kick-off to be arranged). The dates of the subsequent rounds are: 15th October (second round), 29th October (semi-final) and 3rd December (final).

(continued on page 7)

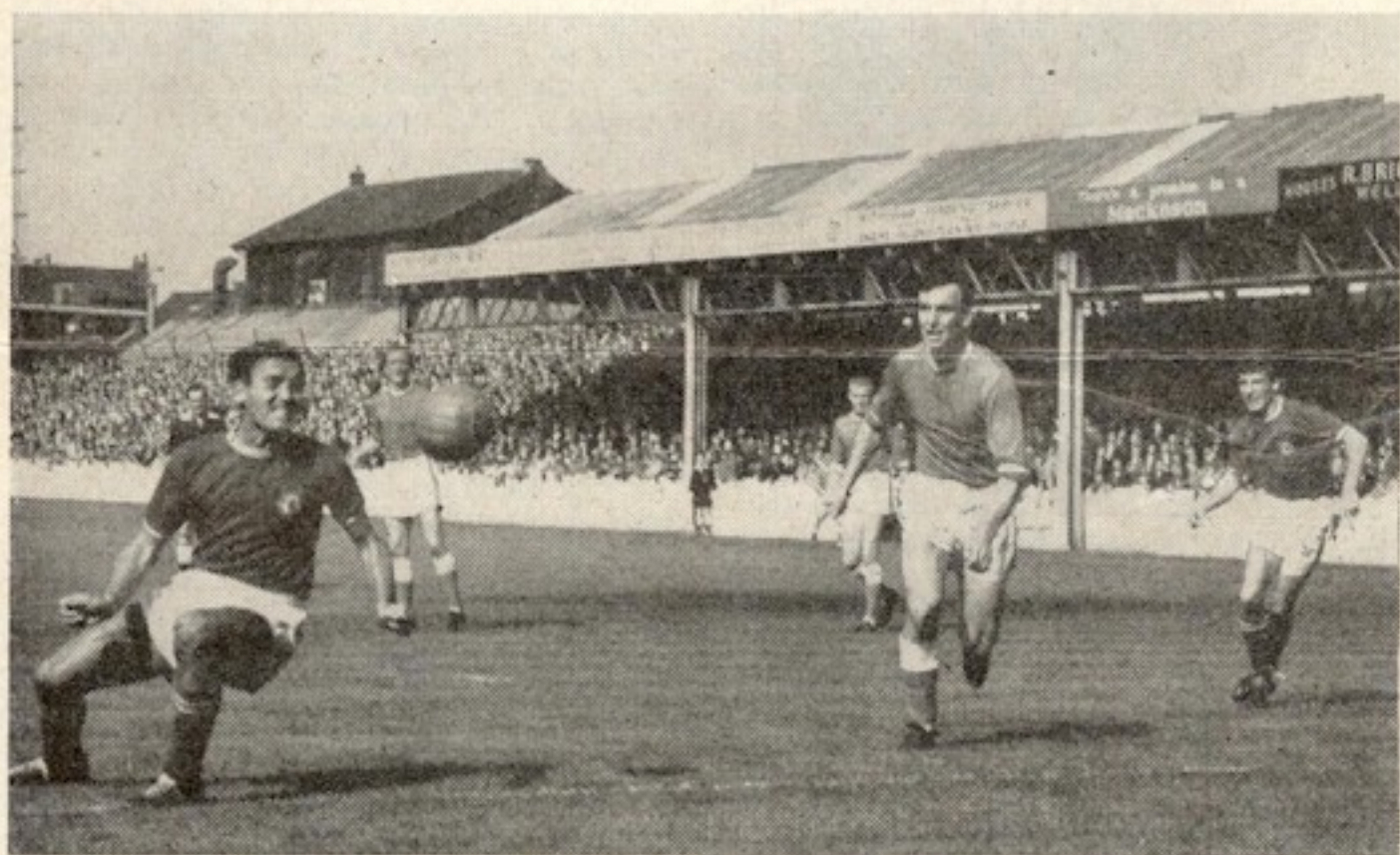
OUR FRONT COVER

Albert Murray goes up for a Tommy Knox centre in our game at Brighton.

BOBBY TAMBLING HEADER GIVES

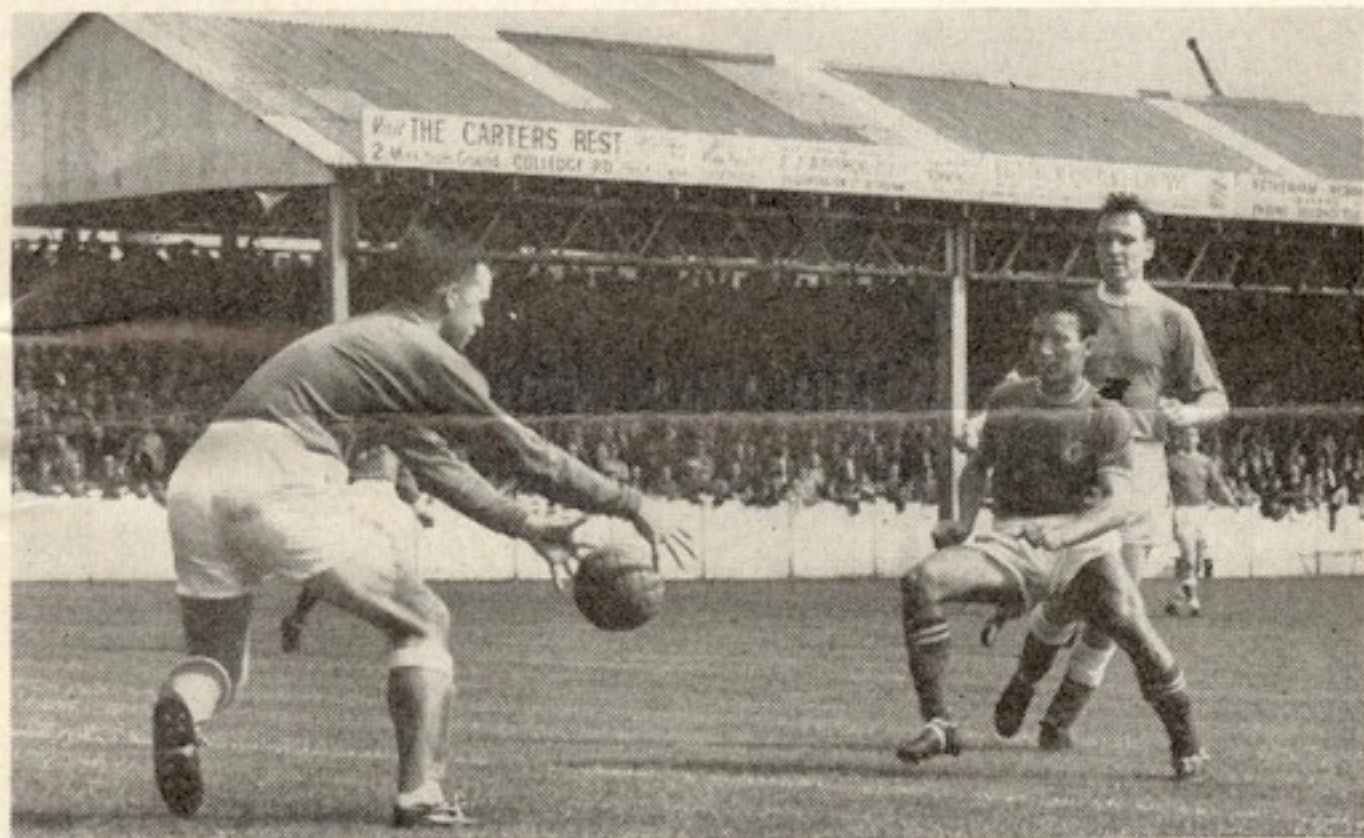


Bobby Tambling heads home a centre from Ken Shellito for our first goal of the season.

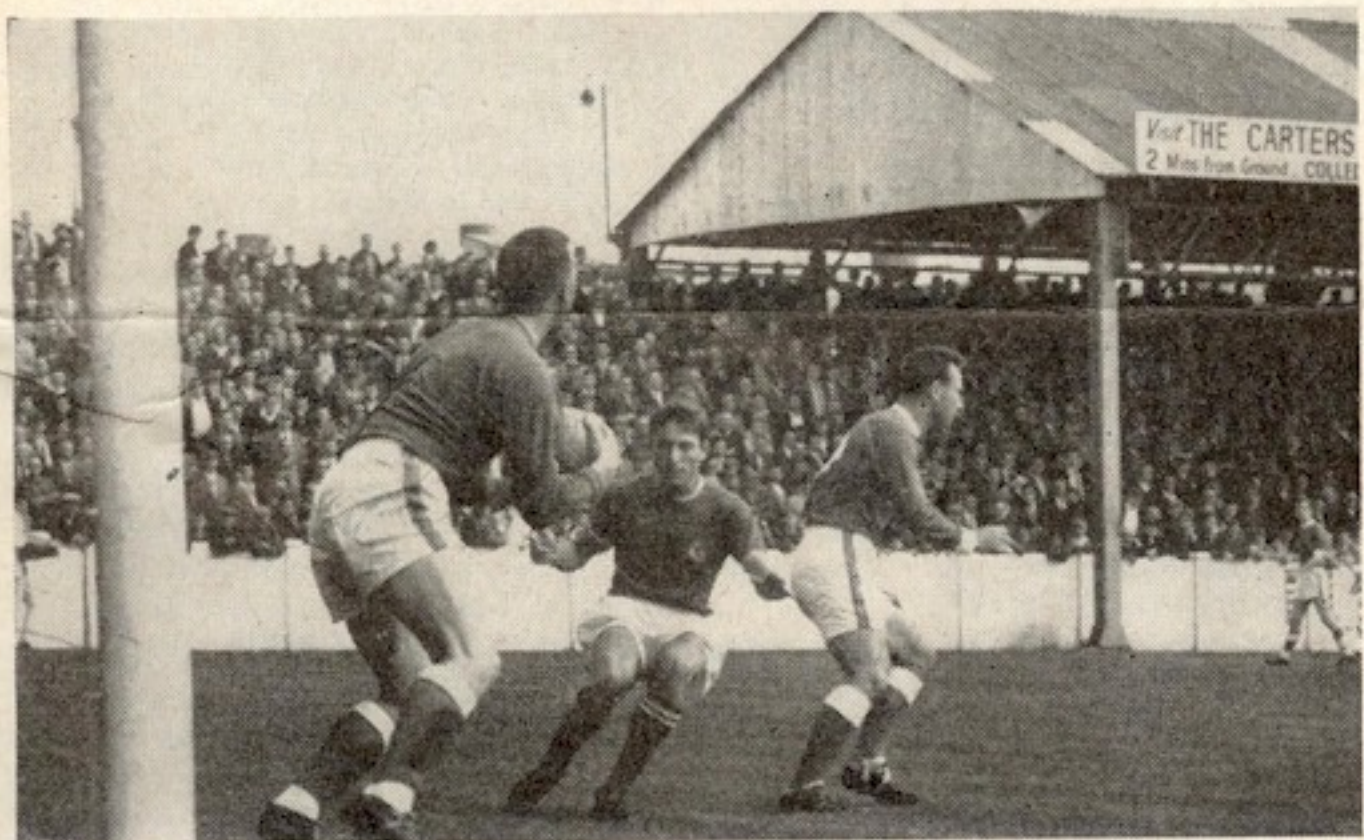


This header by Barry Bridges beat Ironside, but passed outside the post.

US VICTORY AT ROTHERHAM



Goalkeeper Ironside stops a shot by Bobby Tambling with Barry Bridges about to challenge.



Ironside stops another hard drive by Tambling.

OUR VISITORS TODAY

THIS afternoon's game brings fellow-Londoners, Charlton Athletic to Stamford Bridge to renew old rivalries of happier days when both clubs were in the First Division.

Last winter Charlton staged a most remarkable revival after looking certain candidates for relegation at one period. Their recovery dated from the time of the appointment of Mr. Frank Hill, the former Notts County manager, in succession to Mr. Jimmy Trotter in November last year. Mr. Hill quickly improved the outlook and Charlton climbed steadily up the table until the threat of a drop into the Third Division was dispelled. They eventually finished in the 15th position, their record from December 9 until the end of the season showing 12 wins, six draws and only five defeats in 23 League engagements, one of the best records over that period in the Division.

A notable absentee from Charlton's playing staff at present is centre-forward Stuart Leary, who after years of football and county cricket for Kent, recently went for a holiday in his native South Africa. He has said, however, that on his return to this country around November he will be willing to play for Charlton again.

The only experienced addition to the Valley staff during the summer was that of goalkeeper Peter Wakeham, signed from Sunderland. A native of Kingsbridge, Devon, Wakeham started his professional career with Torquay in 1957, and while there gained F.A. representative recognition. He moved to Sunderland in September, 1958, and had plenty of senior experience with the Wearsiders. He made his debut for his new club in a friendly with Crystal Palace a fortnight ago, taking over from Willie Duff, who was regular senior choice last winter.

Right-back John Sewell, who comes from Brockley, has been a professional at the Valley since 1955, though it is only comparatively recently that he has become a first-team regular. His first League game was at right-half in January, 1957, and he moved to his present position two seasons ago.

Now in his second spell of service with Charlton, John Hewie first signed for them in 1949, and in addition to playing in the attack he occupied every defensive berth except goal. A native of Pretoria, Hewie went back to South Africa at the end of the 1959-60 season, and then returned to this country to re-join Charlton in December 1960. Capped by Scotland, for whom he is qualified by parentage, Hewie rectified the fact that he had never previously played in goal in a League match by turning out there on four occasions last season. Of those games, Charlton won two and drew the others.

Another Springbok from Pretoria, Brian Tocknell, signed for Charlton in 1959, and has done duty in all three positions in the half-back line since making his senior debut in the third match of the 1960-61 season.

CHARLTON ATHLETIC

Ground: The Valley.

Colours: Shirts: Red. Shorts: White.
Stockings: Red and White Hoops.

Attendance Record: 75,031 v. Aston Villa
(F.A. Cup), 12th February, 1938.

F.A. Cup Winners: 1947.

F.A. Cup Runners-up: 1946.

Division I Runners-up: 1937.

Relegated to Division II: 1957.

Division II Runners-up: 1936.

Relegated to Division III (South): 1933.

Division III (South) Champions: 1929, 1935.

Marvin Hinton gained England Under-23 honours last season, a mark of his progress to the point where he is among the best young centre-halves in the game. He joined Charlton from school, and signed as a professional for them in 1957.

Wisbech, Cambridgeshire, was the birthplace of Mike Bailey, whose displays at left-half were another bright feature of last season. A strong attacking player, he scored seven goals from left-half last winter. Developed by the club's junior organisation, he signed as a professional just over two years ago.

For a winger Sam Lawrie has a most useful scoring record, and his return last

season was eleven goals in 37 League outings. Glasgow-born, he joined Charlton from Middlesbrough in November 1956, and has been one of their most consistent forwards in the past four years. Lawrie recently underwent a cartilage operation.

A young player of whom Charlton have high hopes is Roy Matthews, who established himself at inside-right last winter. Matthews, a native of Slough, is the schemer of the attack, and prefers to provide chances for his colleagues rather than try to score himself, his 28 League matches last season bringing him only three goals.

Dennis Edwards, a former England amateur international who was with Wycombe Wanderers before joining Charlton's professional staff in October 1959, was top scorer with 16 goals in 42 League games last season.

Fred Lucas, the team's utility man, did duty in both wing-half positions and the two inside-forward berths last term. Born at Slades Green, Lucas has been a professional at the Valley since 1952. His first senior outing was at inside-right in April 1956.

Local product Brian Kinsey was given the opportunity to settle down on the left flank of Charlton's attack last winter, when the late Johnny Summers was unable to play through illness. Just how well Kinsey played is shown by the fact that he missed only one Second Division game, and scored ten goals.

Last Saturday, Charlton opened the new season with a home game against Swansea Town, which they drew 2-2, and on Wednesday visited Sunderland where they lost 0-1, the only goal coming late in the second half.

Chelsea v. Charlton Athletic

Past League Results

Season	Home	Away	Season	Home	Away
1929-30*	1-1	1-1	1950-51	2-3	2-1
1936-37	3-0	0-1	1951-52	1-0	1-1
1937-38	1-1	1-3	1952-53	0-1	2-2
1938-39	1-3	0-2	1953-54	3-1	1-1
1946-47	2-2	3-2	1954-55	1-2	2-0
1947-48	3-0	1-3	1955-56	3-1	2-1
1948-49	2-2	1-1	1956-57	1-3	1-3
1949-50	1-3	0-1	1962-63 Today	Dec. 22.	

(*Matches in Division II)

The teams have not met in the F.A. Cup.

SUMMARY

	P	W	D	L	F	A	Pts	
League: Home	...	15	5	4	6	25	23	14
Away	...	15	4	5	6	18	23	13
Total		30	9	9	12	43	46	27



JOHN HEWIE

THE TALK OF STAMFORD BRIDGE—cont.

The full draw for the first round is as follows:

- Queen's Park Rangers v W. Ham United
- Enfield v Charlton Athletic
- Wealdstone v Millwall
- Tottenham Hotspur v Arsenal
- Bexleyheath v Fulham
- Brentford v Hayes
- Crystal Palace v Wimbledon
- Chelsea v Leyton Orient

FOOTBALL LEAGUE—DIVISION II

	Home Goals						Away Goals						Pts
	P	W	D	L	F	A	P	W	D	L	F	A	
CHELSEA	2	1	0	0	3	0	1	0	0	1	0	4	
Plymouth	2	2	0	0	9	1	0	0	0	0	0	4	
Sunderland	2	2	0	0	4	1	0	0	0	0	0	4	
Portsmouth	2	1	0	0	4	1	0	1	0	1	1	3	
Bury	1	1	0	0	1	0	0	0	0	0	0	2	
Cardiff	2	0	1	0	4	4	0	1	0	0	0	2	
Derby	2	0	1	0	1	1	0	1	0	3	3	2	
Huddersfield	2	0	1	0	3	3	0	1	0	1	1	2	
Leeds	2	0	0	1	3	4	1	0	0	1	0	2	
Middlesbro'	2	1	0	0	4	2	0	0	1	1	3	2	
Norwich	2	0	1	0	0	0	0	1	0	2	2	2	
Rotherham	2	0	0	1	0	1	1	0	0	4	3	2	
Scunthorpe	2	1	0	0	2	1	0	0	1	0	3	2	
Swansea	1	0	0	0	0	0	0	1	0	2	2	1	
Southampton	2	0	1	0	2	2	0	0	1	1	2	1	
CHARLTON	2	0	1	0	2	2	0	0	1	0	1	1	
Luton	2	0	0	0	0	0	0	1	1	2	3	1	
Newcastle	2	0	0	0	0	0	0	1	1	6	8	1	
Stoke	2	0	0	1	0	1	0	1	0	1	1	1	
Walsall	2	0	1	0	1	1	0	0	1	1	4	1	
Grimsby	2	0	1	0	1	1	0	0	1	0	2	1	
Preston	2	0	1	0	2	2	0	0	1	1	7	1	

CHARLTON ATHLETIC



Standing: J. Sewell, F. Lucas, J. Hewie, W. Duff, M. Hinton, B. Ord.
Seated: S. Lawrie, D. Edwards, S. Leary, R. White (*now Tonbridge*), B. Kinsey.
Insets: P. Wakeham, R. Matthews.

CHELSEA

Colours—Shirts: Royal Blue (White Collars) Shorts: White
Stockings: White; Red, White and Blue tops

(Goal)

Bonetti

1

(Right-back)

Shellito

2

(Left-back)

McCreadie

3

(Right-half)

Venables

4

(Centre-half)

Mortimore

5

(Left-half)

Upton

6

(Outside-right)

Murray

7

(Inside-right)

Tambling

8

(Centre-forward)

Bridges

9

(Inside-left)

Moore

10

(Outside-left)

Blunstone

11

Referee:

Mr. C. F. DUXBURY
(Preston, Lancs.)



Linesmen:

Mr. C. A. SHARP
(Welwyn Garden City)
(Red Flag)

Mr. D. H. WALKER
(Wisbech)
(Yellow Flag)

11

Kinsey

(Outside-left)

10

Peacock

(Inside-left)

9

Edwards

(Centre-forward)

8

Lucas

(Inside-right)

7

Matthews

(Outside-right)

6

Bailey

(Left-half)

5

Hinton

(Centre-half)

4

Tocknell

(Right-half)

3

Hewie

(Left-back)

2

Sewell

(Right-back)

1

Wakeham

(Goal)

CHARLTON ATHLETIC

Colours—Shirts: Red Shorts: White Stockings: Red and White Hoops.

Chelsea Stars we remember

No. 2
**GEORGE
HILSDON**

By True Blue

DURING the past few weeks the name of one Chelsea star, Peter Brabrook, has been frequently mentioned. The newspapers have used up a lot of space discussing the future of the outside-right. Much of this has been just chatter, and I am in no kind of position to sort the wheat from the chaff, and even at this stage of the proceedings I don't know anything real about the future of this winger whose football skills have given a lot of us a great deal of pleasure.

With much of the talk about the possible transfer of Peter, the name of the West Ham United club has been freely mentioned. That fact served as a reminder about the regularity of player changes in which the Chelsea and West Ham clubs have been concerned.

Without making any sort of effort at a complete list I would suggest that during the years the players of note who have made the short journey from east to west of London would at least amount to a football team in the number sense. One of these players who gave most valuable service to Chelsea was George Hilsdon.

He certainly occupies a leading place among the Chelsea stars whose memory remains fresh in our minds. From 1906 to the end of the 1910-11 season he played in one hundred and fifty League games in the Chelsea first team, and in the course of that period his total of League goals only failed by a couple to reach the century mark.

Top of the tree by accident?

Before going further into details regarding this particular star there is another point connected with him which came to my mind. I began to wonder how many footballers who have risen to the top of the tree, have been discovered more or less by accident. I could even make a long list of star players whose merits have been

spotted by managers or scouts as a sequel to journeys made by them for the express purpose of watching another player of the same club. And that applies to George Hilsdon, as well as other players who have worn the blue shirt of a Chelsea player.

A lucky find

During Chelsea's first season in serious football, Jackie Robertson, at that time player-manager at Stamford Bridge, made the journey across London for the express purpose of watching a player in a reserve team match between West Ham United and Fulham. The name of the player in question doesn't matter. The plain truth is that in the words of Robertson he had no eyes for the player he had gone to size up.

His attention was glued on a lad nineteen years of age who was playing at inside-left for the Hammers. The name of the player which went into the book of the sort managers carry about for future reference was George Hilsdon. And in Robertson's memory box—if not written in the book—was the firm conviction that he had seen a boy whom he felt certain would fit in with his ideas of the needs of Chelsea.

As centre-forward

Cutting a longish story short, the negotiations between the Bridge manager and West Ham officials were brought to a satisfactory conclusion by the transfer of this player from the east end of London in time for him to start the 1906-7 season, not as an inside-left but as a centre-forward.

The newspaper editors of those days did not consider football as important as they do in the modern times. The transfer of a boy from one London club to another was dismissed with the minimum use of type. And we didn't hear much more about George Hilsdon until the opening day of

the 1906-7 season, when the manager took a chance by playing him in the first match.

A dream début

Off-hand I can't think of a parallel paragraph to this one in the whole story of the game. Hilsdon was there to fulfil the prophecy made by Robertson when he signed him on—to the effect that he would be the leader of the club's first team attack in the following season. It was a dream debut, with the Glossop goalkeeper at the receiving end of a barrage. Chelsea went even further than did the Wolves in their opening game of the current season—winning by nine goals to two.

Of those nine goals the new youngster got five. That dream debut got the headlines—in big type for those days. He got service from Jimmy Windridge of the kind he hadn't even dreamt about.

We didn't notice it at the time, but were frequently reminded later that the new boy was seldom quite so dangerous in front of goal as in matches in which he hit one just right in the early stages. During that first season with the club Hilsdon totalled twenty-seven goals in League games—a figure which, as you know, wasn't headed for some time by any Chelsea player.

Those figures, of course, were indeed memorable, as they played an important part in gaining for Chelsea the second position in the table at the finish, and in putting us into the First Division.

Honours in the offing

It is a mere truism to remark, as we have often done, that it is easier to get into the newspaper headlines than it is to keep there. First Division opponents paid more attention to Hilsdon—and better—than did those of the Second class, but Hilsdon went quite near to equalling the figures of that first season. He got twenty-four in League games in the following campaign, and one more than that in the third campaign. In each of those two seasons the next best individual scoring figure for Chelsea was nine.

In next to no time the feats and the play of "Gatling Gun George" compelled attention higher up. In a month or so he played for the Football League against the Irish League, and did his job by registering

a hat-trick. This representative match start was followed by the award of five international caps.

Victory by 9-1

In his second season as a Chelsea player Hilsdon exceeded in a Cup-tie the number of goals he had scored in his first League game with the club. In the first round of the F.A. Cup competition Worksop were beaten by nine goals to one. Hilsdon registered the first of that bunch. After other players had joined in the goal-rush Hilsdon got five more—all in a row.

The power of this import from West Ham faded a bit in the disappointing season of 1909-10, when the shortcomings of the Chelsea forwards in general landed the side in the nineteenth place in the table, and the drop back to the Second Division. In that campaign six was the highest figure in the scoring line of any Chelsea player.

All-round footballer

It is not easy to summarise, in a few words, the secrets of the success of Hilsdon as an attacker. Perhaps the best way to describe him in brief is to say that he was an all-round footballer. For one thing he had strength above average which is in the make-up of many fine players—in thighs which enabled him to come out with the ball in a tight struggle with an opponent.

On the run he could fire the ball goalwards like a bullet with either foot, and perhaps most useful of all, a highly developed positional sense, which instinctively took him into the right place at the right time.

He was the model for the weather-vane which adorns the top of the stand at Stamford Bridge. What an appropriate appreciation of a model footballer.

**ON SALE TODAY
CHELSEA
HANDBOOK 1962-63**

Price Two Shillings

CHELSEA F.C. 1962-63



Standing: T. More, A. Malcolm, D. Butler, K. Shellito, P. Bonetti, P. Brabrook, M. Scott, A. Harris,
T. Venables, E. McCreadie. Seated: G. Moore, A. Murray, B. Bridges, R. Tambling, M. Harrison, A. Young.

PROFESSIONAL STAFF 1962-63

GOALKEEPERS

Player	Height	Weight	Place of Birth	Previous Club	Date Signed
BONETTI, P.	5ft. 10 $\frac{1}{2}$ in.	10st. 9lb.	Wandsworth	Chelsea Juniors	Apr. 1959
DUNN, J.	5ft. 10 $\frac{1}{2}$ in.	12st. 3lb.	Barking	Chelsea Juniors	Jan. 1962
McNALLY, E.	5ft. 10 $\frac{1}{2}$ in.	11st.	Lurgan	Portadown	Dec. 1961

BACKS

BUTLER, D.	5ft. 8in.	11st. 9lb.	Fulham	Chelsea Juniors	May 1960
CORNEY, R.	5ft. 10 $\frac{1}{2}$ in.	11st. 10lb.	Denton (Oxon.)	Chelsea Juniors	June 1962
HARRIS, A.	5ft. 8in.	10st. 6lb.	Northampton	Chelsea Juniors	Jan. 1960
HUXFORD, C.	5ft. 9 $\frac{1}{2}$ in.	11st. 6lb.	Stroud, Glos.	Chelsea Juniors	Oct. 1961
McCREADIE, E.	5ft. 10in.	11st. 3lb.	Glasgow	East Stirlingshire	Apr. 1962
SHELLITO, K.	5ft. 9 $\frac{1}{2}$ in.	12st. 12lb.	East Ham	Chelsea Juniors	Apr. 1957

HALF-BACKS

BRADBURY, T.	5ft. 10 $\frac{1}{2}$ in.	11st. 9lb.	London	Chelsea Juniors	July 1957
HARRIS, R.	5ft. 7 $\frac{1}{2}$ in.	11st.	Hackney	Chelsea Juniors	Nov. 1961
MALCOLM, A.	5ft. 8in.	11st. 10lb.	East Ham	West Ham United	Oct. 1961
MORE, T.	5ft. 9 $\frac{1}{2}$ in.	11st.	Nottingham	Chelsea Juniors	Aug. 1960
MORTIMORE, J.	5ft. 11 $\frac{1}{2}$ in.	11st. 13lb.	Farnborough	Woking	Aug. 1957
SCOTT, M.	5ft. 11in.	11st. 9lb.	Claygate	Chelsea Juniors	Nov. 1956
SORRELL, D.	5ft. 5 $\frac{1}{2}$ in.	10st. 7lb.	London	Leyton Orient	Mar. 1962
UPTON, F.	5ft. 11 $\frac{1}{2}$ in.	13st. 4lb.	Nuneaton	Derby County	Aug. 1961
VENABLES, T.	5ft. 8 $\frac{1}{2}$ in.	11st. 6lb.	Dagenham	Chelsea Juniors	Aug. 1960
WATSON, I.	5ft. 11in.	11st. 9lb.	Hammersmith	Chelsea Juniors	Feb. 1962
YOUNG, A.	6ft. 0 $\frac{1}{2}$ in.	12st. 8lb.	London	Arsenal	Nov. 1961

FORWARDS

BLUNSTONE, F.	5ft. 6 $\frac{1}{2}$ in.	11st. 11lb.	Crewe	Crewe Alexandra	Feb. 1953
BRABROOK, P.	5ft. 10 $\frac{1}{2}$ in.	12st. 10lb.	Greenwich	Chelsea Juniors	Mar. 1955
BRIDGES, B.	5ft. 9 $\frac{1}{2}$ in.	12st. 11lb.	Norwich	Chelsea Juniors	May 1958
BROWN, D.	5ft. 8 $\frac{1}{2}$ in.	10st. 6lb.	Reading	Chelsea Juniors	June 1962
HARRISON, M.	5ft. 10 $\frac{1}{2}$ in.	12st. 9lb.	Ilford	Chelsea Juniors	Apr. 1957
KNOX, T.	5ft. 9in.	11st.	Glasgow	East Stirlingshire	June 1962
MOORE, G.	5ft. 11 $\frac{1}{2}$ in.	13st. 11lb.	Wales	Cardiff City	Dec. 1961
MURRAY, A.	5ft. 7 $\frac{1}{2}$ in.	10st. 2lb.	Shoreditch	Chelsea Juniors	May 1961
O'ROURKE, J.	5ft. 8 $\frac{1}{2}$ in.	10st. 3lb.	London	Arsenal	Apr. 1962
SHAW, C.	5ft. 6 $\frac{1}{2}$ in.	10st. 6lb.	St. Albans	Chelsea Juniors	May 1961
TAMBLING, R.	5ft. 8in.	11st. 7lb.	Storrington	Chelsea Juniors	Sept. 1958

(Reprinted for the benefit of our supporters who missed our first programme of the season).

SPECIAL BUS SERVICE

FOOTBALL EXPRESS

A frequent non-stop service of express buses will operate between Clapham Junction (St. John's Hill) stopping also at Falcon Road just south of railway arches and Chelsea (Lots Road), both before and after the match. Fare 1/- (single journey only).

FIXTURES 1962-1963

Football League Division II

© Football League Ltd., 1962-63

1962	Opponents	Venue	F.A.
Aug. 18	Rotherham United	... Away	1 0
" 22	SCUNTHORPE U.	... HOME	3 0
" 25	CHARLTON A.	... HOME
" 28	Scunthorpe United	... Away
Sept. 1	Stoke City	... Away
" 8	SUNDERLAND	... HOME
" 10	SOUTHAMPTON	... HOME
" 15	Leeds United	... Away
" 19	Southampton	... Away
" 22	SWANSEA TOWN	... HOME
" 29	Portsmouth	... Away
Oct. 6	CARDIFF CITY	... HOME
" 13	Huddersfield Town	... Away
" 20	MIDDLESBROUGH	... HOME
" 27	Derby County	... Away
Nov. 3	(1) NEWCASTLE U.	... HOME
" 10	Walsall	... Away
" 17	NORWICH CITY	... HOME
" 24	(2) Grimsby Town	... Away
Dec. 1	PLYMOUTH A.	... HOME
" 8	Preston North End	... Away
" 15	ROTHERHAM U.	... HOME
" 22	Charlton Athletic	... Away
" 26	Luton Town	... Away
" 29	LUTON TOWN	... HOME

1963			
Jan. 5	(3) F.A. Cup
" 12	STOKE CITY	... HOME
" 19	Sunderland	... Away
" 26	(4) F.A. Cup
Feb. 2	LEEDS UNITED	... HOME
" 9	Swansea Town	... Away
" 16	(5) PORTSMOUTH	... HOME
" 23	Cardiff City	... Away
Mar. 2	HUDDERSFIELD T.	... HOME
" 9	(6) Middlesbrough	... Away
" 16	DERBY COUNTY	... HOME
" 23	Newcastle United	... Away
" 30	(S.F.) WALSALL	... HOME
Apr. 6	Norwich City	... Away
" 12	BURY	... HOME
" 13	GRIMSBY TOWN	... HOME
" 16	Bury	... Away
" 20	Plymouth Argyle	... Away
" 27	PRESTON NORTH END	... HOME
May 4	F.A. Cup Final

Football Combination

© Football League Ltd., 1962-63

1962	Opponents	Venue	F.A.
Aug. 21	Watford	... Away	2 2
Sept. 1	Swindon Town	... Away
" 5	QUEEN'S PARK R.	... HOME
" 11	Millwall	... Away
" 15	ALDRSHOT	... HOME
" 26	COVENTRY CITY	... HOME
Oct. 3	SOUTHAMPTON	... HOME
" 24	Leyton Orient	... Away
" 27	BRIGHTON & HOVE A.	... HOME
Nov. 3	Birmingham City	... Away
" 10	Aldershot	... Away
" 14	BRENTFORD	... HOME
" 24	Charlton Athletic	... Away
" 28	FULHAM	... HOME
Dec. 5	Portsmouth	... Away
" 12	READING	... HOME
" 15	Bournemouth & Bos. Ath.	... Away
" 22	SOUTHEND UNITED	... HOME
" 29	Southend United	... Away

Your Record Entertainment

The records which you hear today have been kindly provided by and can be obtained from Dawson Bros., 16 Fulham High Street, S.W.6.

1963			
Jan. 16	WATFORD	... HOME
" 21	Queen's Park Rangers	... Away
" 30	MILLWALL	... HOME
Feb. 6	Coventry City	... Away
" 13	Southampton	... Away
" 23	SWINDON TOWN	... HOME
Mar. 6	LEYTON ORIENT	... HOME
" 9	Brighton & Hove Albion	... Away
" 23	BIRMINGHAM CITY	... HOME
" 26	Brentford	... Away
Apr. 6	CHARLTON ATH.	... HOME
" 8	Fulham	... Away
" 17	PORTSMOUTH	... HOME
" 24	Reading	... Away
May 1	BOURNEMOUTH	... HOME

ON SALE TODAY

Chelsea Handbook 1962-63

Price Two Shillings

All last season's records and 1962-63 fixtures, together with pen pictures of the players.

Junior Fixtures

South-East Counties League

1962	Opponents	Venue	F.A.
Aug. 18	PORTSMOUTH	HOME	5 0
" 25	Watford	Away
Sept. 1	WATFORD	HOME
" 8	Arsenal	Away
" 15	QUEEN'S PARK R.	Hendon
" 22	Fulham	Away
" 29	ARSENAL	HOME
Oct. 13	FULHAM	HOME
" 20	Luton Town	Away
Nov. 10	BRENTFORD	HOME
" 17	Millwall	Away
" 24	LUTON TOWN	HOME
Dec. 1	Tottenham Hotspur	Away
" 8	MILLWALL	HOME
" 15	Charlton Athletic	Away
" 29	Bexleyheath & Welling	Away

Match Summaries

FOOTBALL LEAGUE

Saturday, 18th August.

Beat ROTHERHAM UNITED (Away) 1-0. Half-time: 1-0.
Attendance: 11,159.

Referee: Mr. A. Jobling (Morecambe)

Rotherham United—Ironside; Jackson, Morgan; Lambert, Madden, Lancaster; Weston, Kirkman, McIlmoyle, Houghton, Taylor.

Chelsea—Bonetti; Shellito, McCreadie; Venables, Mortimore, Upton; Murray, Tambling, Bridges, Moore, Blunstone.

Scorer: Tambling.

Wednesday, 22nd August.

Beat SCUNTHORPE UNITED (Home) 3-0. Half-time: 2-0.
Referee: Mr. E. T. Jennings (Stourbridge).

Attendance: 18,045.

Chelsea—Bonetti; Shellito, McCreadie; Venables, Mortimore, Upton; Murray, Tambling, Bridges, Moore, Blunstone.

Scunthorpe United—Jones; Gannon, Brownsword; Gibson, Neale, Howells; Marriott, Godfrey, Kaye, McGuigan, Hodgson.

Scorers: Moore, Bridges 2.

FOOTBALL COMBINATION

Tuesday, 21st August.

Drew with WATFORD (Away) 2-2. Half-time: 0-2.

Team: J. Cowen; Butler, Harris (A.); Malcolm, Scott, Harris (R.); Brabrook, Shaw, O'Rourke, Brown, Knox.

Scorers: Brown, Shaw (pen.).

SOUTH-EAST COUNTIES LEAGUE

Saturday, 18th August.

Beat PORTSMOUTH (Home) 5-0. Half-time: 1-0.

Team: J. Cowen; S. Henderson, T. Leaver; E. McKenzie, Harris (R.), D. Shevells; A. Bateman, J. Scott, J. Boyle, P. Houseman, O. Vafiadis.

Scorers: Bateman 2 (1 pen.), Boyle, Houseman, McKenzie.

London F.A. Challenge Cup

1962	Opponents	Venue	F.A.
Oct. 1	(1) LEYTON ORIENT	HOME

First Team Friendlies

1962	Opponents	Venue	F.A.
Aug. 13	Brighton & Hove Albion	Away	1 1

HALF-TIME SCOREBOARD

FIRST DIVISION

A	Arsenal v. Man. Utd.
B	Birm'ham. v. Leyton O.
C	Blackburn v. Liverpool
D	Blackpool v. Wolves
E	Bolton v. Fulham
F	Everton v. Sheff. Wed.
G	Leicester v. Nottm. F.
H	Man. City v. Aston Villa
J	Sheff. Utd. v. Ipswich
K	West Brom. v. Burnley
L	W. Ham v. Tottenham

SECOND DIVISION

M	Derby v. Cardiff
N	Grimsby v. Scunthorpe
O	Leeds v. Sunderland
P	Luton v. Rotherham
R	Midd'bro. v. Hudd'fld.
S	Newcastle v. Portsmth.
T	Norwich v. Plymouth
U	Southampton v. Bury
V	Swansea v. Stoke
W	Walsall v. Preston



NEXT HOME LEAGUE MATCH

SATURDAY, 8th SEPTEMBER

(Kick-off 3 p.m.)

Sunderland

STAN ANDERSON, England
right-half against Austria and
Scotland last season.

OTHER FORTHCOMING MATCHES

Saturday, 1st September (kick-off 3 p.m.)

WATFORD—SOUTH-EAST COUNTIES LEAGUE

Wednesday, 5th September (kick-off 3 p.m.)

QUEEN'S PARK RANGERS—FOOTBALL COMBINATION

Monday, 10th September (kick-off 7.30 p.m.)

SOUTHAMPTON—FOOTBALL LEAGUE

Saturday, 15th September (kick-off 3 p.m.)

ALDERSHOT—FOOTBALL COMBINATION

Saturday, 22nd September (kick-off 3 p.m.)

SWANSEA TOWN—FOOTBALL LEAGUE

Seat Reservations for League Matches

Prices of reserved seats at home League matches are 6/-, 8/-, 10/- and 12/-. Applications will be accepted one calendar month in advance, and should be accompanied by remittance and stamped addressed envelope. It will be appreciated if separate application is made for each match. Seats may also be purchased by personal application at the club offices in the month preceding the match.