

SEASON 1965-66

Arsenal

FOOTBALL CLUB

F.A. CUP WINNERS
1930, 1936, 1950

LEAGUE CHAMPIONS
1931, 1933, 1934, 1935,
1938, 1948, 1953

FOOTBALL LEAGUE
DIVISION ONE

Saturday,
4th September

v.

Chelsea

KICK-OFF 3 P.M.

OFFICIAL PROGRAMME

6d

ARSENAL FOOTBALL CLUB LIMITED

Life President

SIR BRACEWELL SMITH, BART., K.C.V.O., LL.D., B.SC.

Directors

D. J. C. H. HILL-WOOD, ESQ., M.C. (*Chairman*)

G. BRACEWELL SMITH, ESQ., M.B.E., B.A.

SIR ROBERT BELLINGER

S. C. MCINTYRE, ESQ., M.B.E., F.C.I.S.

P. D. HILL-WOOD, ESQ.

The Rev. N. F. BONE, T.D.

Secretary

W. R. WALL

Manager

W. A. WRIGHT, C.B.E.



LEAGUE CHAMPIONS
1931, 1933, 1934,
1935, 1938, 1948,
1953.

Colours—Shirts: Red, White
Collar & Cuffs: White,
Red Seams, Stockings: Red.



F.A. CUP WINNERS
1930, 1936, 1950.

ARSENAL STADIUM,
HIGHBURY, N.5.

Grams:—
GUNSBERG,
LONDON, N.5.

Vol. XLVII. No. 2

Saturday, 4th September, 1965

Voice of Arsenal

WE have stressed so often in the past how important is a good start to a season, and although the aim must always be one hundred per cent, we can still be well satisfied with our League performance so far. The home win against Stoke City was followed by a point at Northampton, and anyone who thought that, as a matter of course, we should win there, should have seen the way the new arrivals in the First Division fought for their point. The qualities of Northampton were confirmed later in the same week when they held Manchester United to a draw. Then, at Burnley on Saturday, having been two goals down, we came back to take a point from the Turf Moor club and win a good deal of praise in doing so. It is a little silly to talk of unbeaten records after only three matches but neither Chelsea nor ourselves were beaten in these first three games but Chelsea lost their fourth match against Stoke City at Stamford Bridge on

Wednesday evening. Chelsea, of course, have been a bogey side here for several seasons — they beat us 3-1 here last season. It's time the tables were turned and today would be as good a day as any!

Youth Progress

Referring again to the question of a good start, the club as a whole had a bumper start to the season because on the first day all our teams won. The Combination side scored four at Plymouth to win 4-1; our scorers were Tawse, Magill and Radford

Keep this coupon and submit only when requested to do so and in accordance with instructions to be issued. It may help you to obtain a Cup Final ticket if we are participants.

Number 2

(two). The Metropolitan League team beat Woodford Town 2-1, and the South-East Counties team beat Ipswich Town 3-2. During the following week the Metropolitan League team beat Barnet 2-0, and all three sides won again last Saturday. The Combination side beat Northampton Town 5-0 at Highbury, the Metropolitan League team beat Chatham 1-0, and the South-East Counties side beat Fulham 2-1. So the position after the second Saturday of the season was that all four teams were unbeaten, and of the ten matches played between them, eight were won and two drawn. Another interesting feature of the start was that so many of our Youth players were in the Combination side which scored five last Saturday — Peter Storey, Ernie Wilkinson, John Walley, Doug Baker and John Radford, though John, of course, is now regarded as a senior player. This is ample evidence that our Youth policy is beginning to show tangible results and is all very encouraging.

ARSENAL v. CHELSEA

Season	Division I		Season	Division I	
	Home	Away		Home	Away
1907-08	0-0	1-2	1946-47	1-2	1-2
1908-09	0-0	2-1	1947-48	0-2	0-0
1909-10	3-2	1-0	1948-49	1-2	1-0
1912-13	0-1	1-1	1949-50	2-3	2-1
1919-20	1-1	1-3	1950-51	0-0	1-0
1920-21	1-1	2-1	1951-52	2-1	3-1
1921-22	1-0	2-0	1952-53	2-0	1-1
1922-23	3-1	0-0	1953-54	1-2	2-0
1923-24	1-0	0-0	1954-55	1-0	1-1
1930-31	2-1	5-1	1955-56	1-1	0-2
1931-32	1-1	1-2	1956-57	2-0	1-1
1932-33	4-1	3-1	1957-58	5-4	0-0
1933-34	2-1	2-2	1958-59	1-1	3-0
1934-35	2-2	5-2	1959-60	1-4	3-1
1935-36	1-1	1-1	1960-61	1-4	1-3
1936-37	4-1	0-2	1961-62	0-3	3-2
1937-38	2-0	2-2	1963-64	2-4	1-3
1938-39	1-0	2-4	1964-65	1-3	1-2

Arsenal score shown first.

Summary of League Encounters

	P	W	D	L	F	A	Pts
Home	...	36	15	10	11	53	50 40
Away	...	36	15	11	10	56	45 41
		72	30	21	21	109	95 81

F.A. Challenge Cup

- 1915—Second Round: Chelsea won 1-0.
- 1930—Third Round: Arsenal won 2-0.
- 1931—Fourth Round: Chelsea won 2-1.
- 1939—Third Round: Chelsea won 2-1.
- 1947—Third Round: Chelsea won 2-0 (after two drawn games, both 1-1).
- 1950—Semi-final: Arsenal won 1-0 (after a 2-2 draw).
- 1952—Semi-final: Arsenal won 3-0 (after a 1-1 draw).

**COPIES OF THE
ARSENAL HANDBOOK
FOR 1965-66 ARE
ON SALE TODAY
PRICE ONE SHILLING**

There was, however, one unhappy aspect to the new season. Two of our younger players, Neil Leven and David Jenkins both broke their legs in pre-season practice matches. We commiserate with them and wish them both a speedy recovery, so that they can soon be wearing an Arsenal shirt again. It was unlucky for Jim Furnell after playing so well against Stoke City that a knock put him out of the next two matches, but all being well he should be back today. In the meantime Bob Wilson did well both at Northampton and Burnley.

Continued on next page



JOE BAKER

Arsenal's first goalscorer of the new season. Joe started off with two against Stoke City.

Voice of Arsenal

Continued from previous page

Substitutes

How many people thought, when the substitute rule became law for this season, that 48 substitutes would have made their bow by the second Saturday of the season? It was interesting that of the 21 used last Saturday, 14 of them came on in the second-half. Is this significant in any way, or does it mean that players are more vulnerable to injury in the second-half than in the first; was it mere coincidence? Chelsea still finished with ten men, having called a substitute on before Tambling was injured later on and the limit for substitutes is one per game. On the question of substitutes we received a letter from a Mr. Hubbard of East Barnet asking "If, during the warm-up session, one of the team or substitute is injured, would the referee be allowed to delay the start in order to enable a team to commence the match with a full complement, or, if necessary, the naming of another substitute?" The plain answer to this is that the referee would not be justified in delaying the start of the game. The Manager's first alternative would be to put his substitute into the team and start the match with 11 players, naming another substitute. The other alternative which might arise if the substitute was a forward and the injured player a full back, would be to start the game with ten men, leaving his substitute as named, and then putting another full-back into the field as soon as the player he chose was stripped to play. But the game must start on time.

The Programme

We would like to thank those supporters who wrote to us in response to our remarks last season in connection with our

programme. Some of you may remember that we invited comment as to which features were most popular, and for any suggestions which, it was felt, might improve still further a programme which was voted last season as being one of the best two in the country. By far the highest request was for the return of the feature on an individual Arsenal player, which we have included from time to time in the past. We have, therefore, reintroduced this, beginning with our captain, George Eastham, in the programme against Stoke City, and continuing today with our goal-keeper, Jim Furnell. We propose including the whole first team and reserves during the season, going through from goal-keepers, and then backs, half-backs and forwards.

Another item which stimulated quite a lot of comment was the question of Readers' Letters. The majority of those writing were in favour of including Readers' Letters; a minority were quite strong in asking that we should not introduce a Live Letters page. On this subject we can only say what we have said before — we have always been ready to print constructive letters from supporters, and will continue to do so in the future, but we are not prepared to include this as a regular feature of the programme, because it simply means that by doing so we are committed to printing letters in every programme, whether they are good, bad or indifferent, in order to fill the space. If a letter is good enough and of general interest to Arsenal supporters we shall be happy to print it.

The third highest subject was for more information on our other teams. We have always in the past included match details of every match played by an Arsenal side, but we do propose this season adding a few

Continued on page 14

PROGRAMME OF MUSIC

The following items of music will be included in the programme to be played by the Metropolitan Police Band, conducted by Roger Barsotti, M.B.E., A.R.C.M., Director of Music.

MARCH	"Voice of the Guns"	Alford	SELECTION	"Camelot"	Loewe
SELECTION	Robert Stolz Melodies	arr. Barsotti	"POP PARADE SELECTION"		
WALTZ	"Tres Jolie"	Waldteufel	SONG	"Take the Sun"	Rota
			(Vocalist:—Constable Alex Morgan)		
TWO PIECES	(a) "Jazz Rumba"	Palange	MARCH	"Amparito Roca"	Texidor
	(b) "Mexican Hat Dance"	Partichela			

ARSENAL SONG to the tune of "Anchors Aweigh" Zimmermann

PLAYERS RETAINED FOR 1965-66

<i>Name</i>	<i>Position</i>	<i>Previous Club</i>	<i>Signed</i>	<i>Birthplace</i>
Adams, E. R.	GK	Apprentice	18 1 65	London
Adams, V.	WHB	Apprentice	21 10 63	Chesterfield
Armstrong, G.	WF	Leslie B.C.	24 8 61	Hebburn Co. Durham
Baker, D. G.	IF	Apprentice	6 5 64	London
Baker, J.	CF	A. C. Torino	16 7 62	Liverpool
Baldwin, T.	IF	Wrekenton Juniors	14 12 62	Gateshead
Boot, M. C.	WHB	Apprentice	18 12 64	Leicester
Burns, A. J.	GK	Tonbridge United	14 3 63	Edenbridge
Clarke, F. R. G.	FB	Glenavon	3 11 60	Banbridge
Corr, J. J.	WF	Possilpark Y.M.C.A.	28 6 65	Glasgow
Court, D. J.	WHB	Apprentice	8 1 62	London
Cumming, G. R. R.	IF	Glasgow United	23 1 65	Johnstone
Eastham, G. E.	IF	Newcastle United	18 11 60	Blackpool
Furnell, J.	GK	Liverpool	22 11 63	Manchester
Hinton, W. A.	FB	Apprentice	2 11 64	London
Howe, D.	FB	West Bromwich Albion	21 4 64	Wolverhampton
Jenkins, D. J.	IF	Apprentice	21 10 63	Bristol
Leven, N.	WF	Possilpark Y.M.C.A.	6 11 64	Glasgow
Magill, E. J.	FB	Portadown	11 5 59	Carrickfergus
McCullough, W. J.	FB	Portadown	12 9 58	Woodburn
McGill, J.	WHB	Possilpark Y.M.C.A.	28 6 65	Partick
McLintock, F.	WHB	Leicester City	5 10 64	Glasgow
Milne, A.	CF	Glasgow United	17 7 65	Renfrew
Neill, W. J. T.	WHB	Bangor City	4 12 59	Belfast
Neilson, G.	WF	Glasgow United	4 6 64	Glasgow
Pack, R. J.	FB	Apprentice	11 11 63	London
Radford, J.	IF	Apprentice	28 2 64	Pontefract
Sammels, J. C.	IF	Apprentice	30 7 62	Ipswich
Simpson, P. F.	WHB	Apprentice	13 4 62	Gorleston
Skirton, A. F. G.	WF	Bath City	20 1 59	Bath
Storey, P. E.	FB	Apprentice	28 9 62	Farnham, Surrey
Tawse, B.	WF	King Street 'A'	8 4 63	Ellon, Scotland
Thear, A. C.	CH	Apprentice	15 2 65	London
Tyrer, A.	OR	Mansfield Town	20 8 65	Liverpool
Ure, J. I. F.	CH	Dundee	22 8 63	Ayr
Walley, J. T.	WHB	Caernarvon Town	23 12 64	Caernarvon
Wilkinson, E. S.	CH	Apprentice	17 2 64	Chesterfield
Wilson, R. P.	GK	Arsenal Amateur	31 3 63	Chesterfield

A FAST, HARD GAME AND



A cross by George Eastham hits goalkeeper Harvey and rebounds out of reach of our other forwards.



Tommy Baldwin in a tussle for the ball with a former Arsenal player, Mike Everitt.

A POINT AT NORTHAMPTON



The prelude to our goal. Harvey stops, but could not hold, a hard drive and Baldwin followed up to score.



In this mass of players, following a corner, Harvey gathers the ball and clears.

THE CHELSEA PLAYERS

PETER BONETTI (Goalkeeper): This lithe, acrobatic goalkeeper must be on the brink of the full England team. He has been chosen for the Under-23 side 12 times and could well gain promotion this season. Born in Wandsworth, he is one of five brothers. He turned professional in 1959 after one season as a junior.

KEN SHELLITO (Right-back): Although unlucky in the matter of injuries in recent seasons, Shellito is still one of the best full-backs in the country. He underwent a cartilage operation during 1963-64 and last season had to go into hospital again for a second operation on the same knee. Is back to full strength now and can be considered a challenger for the England right-back place. He has made one full international appearance.

EDDIE McCREADIE (Left-back): Gained a regular place in the Scotland team last season and there seems no reason why this attacking full-back should not continue to hold his place. Quick to recover and a strong tackler, he likes nothing better than a sally up-field. In fact, McCreddie has played at centre-forward. Signed from East Stirling in April, 1962, he hails from Glasgow.

JOHN HOLLINS (Right-half): Football is in his blood. His father kept goal for Stoke and Wolves; brother Dave is a Welsh international goalkeeper. Still in his 'teens, Hollins played his first full season in 1964-65 and immediately gained a place in the Under-23's. A talented player of the constructive type, he signed as professional only two years ago.

MARVIN HINTON (Centre-half): Adaptable is the word for Hinton. He can play equally well at centre-half, wing-half or full-back. Most of his appearances for Chelsea so far have been at right-back, but with Shellito back to full fitness, Hinton will be a regular in the middle. Made 129 League appearances for Charlton and won three Under-23 caps before moving to Stamford Bridge in 1963 for a fee of £30,000.

RON HARRIS (Left-half): A powerful tackler, he plays tirelessly for the full 90 minutes. First came into prominence as captain of the highly successful England youth team of two years ago. Although only 20, he could well gain a place in the World Cup squad for the 1966 Finals. Like most of the Chelsea side, he came up through the juniors, signing professional in 1961.

JOHN BOYLE (Left-half): This young wing-half made his first appearance in the senior side last season. A Scotsman, he was born in Motherwell. Although of only medium height, he is strong and uncompromising in the tackle and also uses the ball well.

BERT MURRAY (Outside-right): This fast, direct winger played in six Under-23 internationals for England last winter and should gain a full cap in the near future. Allies fine ball control with a powerful shot and scored 17 League goals in 1964-65. One of a big family — five brothers and three sisters — he hails from Shoreditch.

GEORGE GRAHAM (Inside-right): Has made great strides since joining Chelsea from Aston Villa during the summer of 1964. Twenty years old, he came right to the fore last season as a prolific scorer, good with both head and foot. Made two appearances for the Scottish Under-23's. Born in Bargeddie, he can also play at centre-forward.

JIMMY McCALLIOG (Inside-forward): Started his career as an amateur with Leeds, before signing professional for Chelsea on his 17th birthday a year ago. So impressed manager Tommy Docherty that he was given three League outings and began this season in the senior side. His parents are Irish, but has Scottish qualifications, being born in Glasgow. Holds Scottish schoolboy and youth honours.

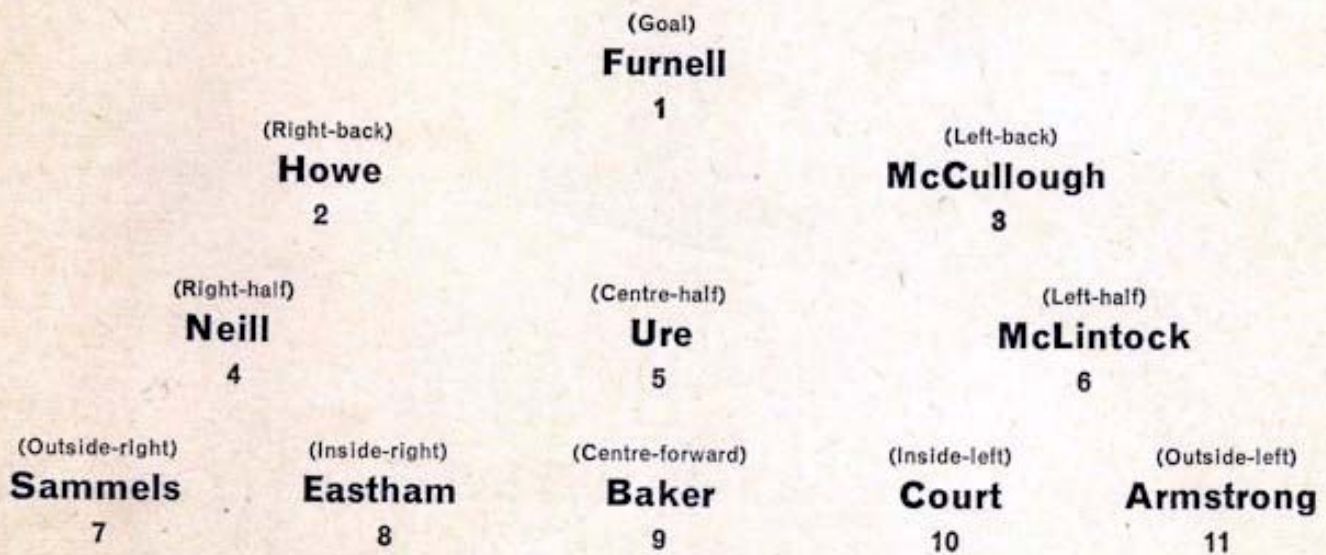
BARRY BRIDGES (Centre-forward): An England schoolboy and youth international, he never played for the Under-23's but gained three full caps during the spring. A very fast runner, Bridges is a fine header of the ball, shoots hard and makes the most of half chances. Chelsea sometimes use Bridges' speed on the right-wing, but there is no doubt that he is more effective in the middle.

TERRY VENABLES (Inside-left): In his early 20's, this brilliant inside-forward has appeared for England at all levels — schoolboy, youth, amateur, Under-23 and full international. Originally a wing-half, he moved into the forward line during 1963-64 with instant success. The "link" man in the Chelsea attack, he possesses an outstanding tactical brain and fine ball control. Born in Dagenham and joined the Stamford Bridge staff in 1958, turning professional two years later.

BOBBY TAMBLING (Outside-left): Chelsea's leading goalscorer between 1961 and 1964, he switched from inside-forward onto the wing last winter. Is now recognised as the side's regular outside-left, a position he filled for the full England team against Wales and France in 1962-63. Has also made 14 appearances for the Under-23's.

ARSENAL

Colours:—Shirts: Red, White Collar and Cuffs. Shorts: White, Red Seams. Stockings: Red.



Substitute:
Radford

Referee:
Mr. K. STOKES
(Newark, Notts.)

Substitute:
Boyle



Linesmen:
Mr. J. H. CHAMBERLAIN
(Ipswich, Suffolk)
Red Flag

Mr. H. V. GISBORNE
(Sherbourne, Dorset)
Yellow Flag



CHELSEA

Colours:—Shirts: Royal Blue. Shorts: Royal Blue. Stockings: White.

Personality profile

Jim Furnell

When Jim Furnell played so well in our first League game of the season it seemed that at last he would be playing against his old club – Burnley, our third fixture of the new season. But an injury in the Stoke City match kept him out of our next two games although Jim should be back between the posts for us today. He signed for Arsenal on 22nd November, 1963 and has now made 40 League appearances. A goalkeeper all his playing days, Jim's first professional club was Burnley and he moved on to Liverpool from there before coming to Highbury. His first game for Burnley – 1-1 at Blackpool. His first game for Liverpool – 1-1 at Walsall. His first at Highbury against Blackpool – 5-3. Jim remembers most letting five goals in against Liverpool despite the fact that he thought he had a good match. The winger with the strongest shot he remembers is John Connelly. Jim's hobby is tinkering with cars; he is a self-taught mechanic.



OUR VISITORS . . .

IN this life there are a lot of things which go on longer than we like, and so far as football is concerned one of these is the manner in which Chelsea have come to Highbury in recent seasons and gone away with both points. Indeed, we have to go back to the 1958-59 season to trace the last occasion on which we had the consolation of even one point from them here. Obviously this run of Chelsea success at our expense is something we would like to see ended today. Defeat is bitter enough, yet on top of that some of the Stamford Bridge club's victories at our expense have been quite substantial. It is high time the boot was on the other foot for a change, and we hope today ushers in a new sequence of victories for our team.

Following last season's fine achievement, when Chelsea were in the running for the championship almost to the last gasp, and finally had to be content with third place, many good judges regard them as likely to be strong contenders again. It was some consolation for their disappointment over the League championship that they should take the Football League Cup, also reach the semi-Final of the F.A. Cup, two achievements which, added to their League performance, made last season a very memorable one for the Stamford Bridge club.

One notable feature of last season's performances was the consistent scoring of their attack. The total of 89 goals was the highest in any post-war season apart from five years ago, when they totalled 98, thanks to a great contribution of 41 from Jimmy Greaves prior to his departure to Italy. Following the departure of Greaves, and his subsequent return to Tottenham, the main brunt of scoring in the Chelsea attack has rested on the capable shoulders of Bobby Tambling and Barry Bridges. In three of the last four seasons Tambling has led the list of Chelsea's League marksmen, but last winter, when he was switched from inside-right to outside-left, he finished fourth, though still with the useful total of 15 goals in League games, plus another ten in F.A. and League Cup matches. Bridges topped last season's marksmen with 20 League goals, closely followed by newcomer George Graham

with 17 and outside-right Albert Murray on the same mark.

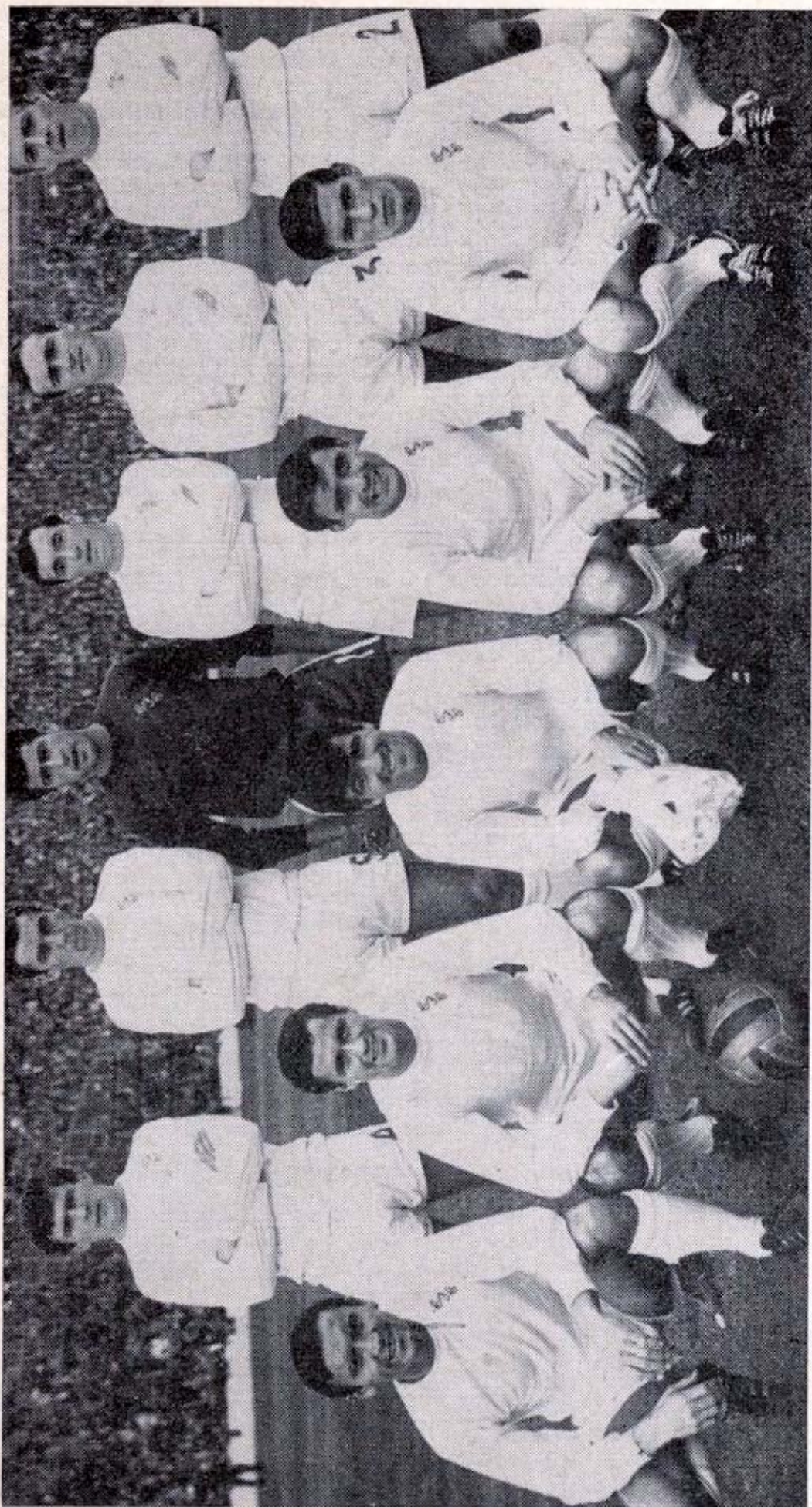
This, incidentally, was the first time that Chelsea had four players finishing with a double-figure total of League goals in any post-war season. Indeed, this has happened only twice before in their history, first in 1929-30, when their four leading marksmen totalled an aggregate of 49 goals, and again in 1935-36 when their aggregate reached 50.

The advantages of having one's goal-scoring evenly divided among four forwards are too obvious to need stressing. Whether Chelsea can continue this season in the same vein as last remains to be seen. If they do, and presuming also that their defence retains the solidity of last winter, it seems clear that they are again going to be among the leading teams.

With defenders of the calibre of Peter Bonetti, Eddie McCreadie — who so worthily earned his first full Scottish cap last season against England and followed it with three close-season honours — Ken Shellito, John Hollins, Ron Harris and Marvin Hinton, so far as can be judged at this early stage Manager Tom Docherty seems just as well provided with defensive strength as last season, providing injuries do not upset calculations.

In addition to the regulars there are also several younger defenders at Stamford Bridge capable of stepping into the breach in case of need, as Youth captain John Boyle and others so ably demonstrated last season. John Hollins gained three England Under-23 caps, Albert Murray was chosen for six consecutive Under-23 games, while Bobby Tambling and Peter Bonetti also added to their previous honours in this class of football. Tambling, of course, has also played for England's full international side, a distinction in which he was joined last season by Terry Venables and Barry Bridges, both of whom were honoured for the first time.

Chelsea began their programme with a 1-1 home draw with Burnley, following this with a 2-2 draw at Stoke and a 3-0 victory last Saturday at Craven Cottage. On Wednesday they were home to Stoke City in the return game, this match ending in a 2-1 win for Stoke.



CHELSEA 1965-66

Standing: J. Hollins, M. Hinton, P. Bonetti, J. Boyle, R. Harris, K. Shellito.
Kneeling: B. Bridges, G. Graham, T. Venables, R. Tambling, J. McCalliog.

Voice of Arsenal

Continued from page 4

lines of comment to these match results as, for instance, if we had lost a match 0-3, it would be helpful to add that we finished with nine men.

The fourth point in order of number of requests was for information on injured players. This is not always easy because in the 48 hours after the programme has gone to press, an injured player can make considerable progress, but what we will try to aim to do this season, is that if a player is out for some time, we will include a progress report on him, such as the fact that he has started light training, or will be having a try-out in a junior side.

There were many other points raised but none of them in sufficient numbers to warrant any action. By putting the four major points into operation we hope to please the majority of our supporters. It is never possible in any walk of life to please everybody! Thank you, anyway, for your valued help.

Away Match Excursions

v. NOTTINGHAM FOREST

Tuesday, 7th September

Kick-off 7.30 p.m.

Arrangements have been made for Day Excursion bookings to be given on the following services at the second-class adult fare of 26/-, children under 14, 13/-. A maximum of 75 tickets will be issued.

Forward Journey

St. Pancras	dep.	4.15 p.m.
Nottingham (Midland)			arr.	6.16 p.m.

Return Journey

Nottingham (Midland)	dep.	9.55 p.m.		
Leicester	arr.	10.49 p.m.
Leicester	dep.	2.13 a.m.
St. Pancras	arr.	5.00 a.m.

A LETTER TO THE EDITOR

AS a season ticket holder and having supported Arsenal for several years, I have had great opportunity to compare our programmes with those of other clubs. I find our programmes infinitely superior to other F.A. programmes, but to make it even more interesting for the supporter may I put forward the suggestion that we extend our pictorial coverage of away games.

To find out the response of this idea could this letter be published in an Arsenal league programme?

R. J. Hart.

21, Christchurch Road,
Southchurch,
Southend-on-Sea,
Essex.

APPRENTICE PLAYERS

In addition to the full-time professionals listed elsewhere in this programme we have on our books the following Apprentices, details as follows:—

Name	Position	Age	Birthplace
Lamb, P. R.	I.F.	17	Rochester
Rhodes, T. R.	W.H.B.	17	Southend
Simmons, D. J.	C.F.	16	Ryde, I.O.W.
*Davidson, R.	I.F.	16	London
Gillibrand, I. V.			
	W.H.B.	16	Blackburn
*Bristow, R. J.	W.F.	16	London
Neville, I. A.	C.F.	16	Blackburn
Rice, P. J.	W.H.B.	16	Belfast
*Youlden, T. F.	F.B.	16	London
Webb, C. R.	C.H.	16	London
Dixon, W. E.	R.H.	15	London

*Previously Schoolboy Internationals

All the above-named are eligible to play in the F.A. Youth Cup, the South East Counties League, the Southern Junior Floodlit Cup, and the London F.A. Youth Cup in 1965/66, plus E. R. Adams, M. C. Boot, G. R. R. Cumming, W. A. Hinton, N. Leven, A. Milne and A. C. Thear, who are full-time professionals but whose 18th birthdays are after the 1st September, 1965

FIXTURES 1965-66

Football League Division 1

© Football League Ltd., 1965-66

1965	Opponents	Venue	F. A.
Aug. 21	STOKE CITY ...	HOME	2 1
" 25	Northampton Town ...	Away	1 1
" 28	Burnley ...	Away	2 2
Sept. 4	CHELSEA ...	HOME
" 7	Nottingham Forest ...	Away
" 11	Tottenham Hotspur ...	Away
" 14	NOTTINGHAM FOR. ...	HOME
" 18	Everton ...	Away
" 25	MANCHESTER UTD. ...	HOME
" 28	NORTHAMPTON T. ...	HOME
Oct. 2	Newcastle United... ..	Away
" 9	FULHAM ...	HOME
" 16	Blackpool ...	Away
" 23	BLACKBURN ROVERS ...	HOME
" 30	Leicester City ...	Away
Nov. 6	SHEFFIELD UNITED ...	HOME
" 13	(1) Leeds United ...	Away
" 20	WEST HAM UTD. ...	HOME
" 27	Sunderland ...	Away
Dec. 4	(2) ASTON VILLA ...	HOME
" 11	Liverpool ...	Away
" 18	BLACKPOOL ...	HOME
" 27	Sheffield Wednesday ...	Away
" 28	SHEFFIELD WED. ...	HOME
1966			
Jan. 1	Fulham ...	Away
" 8	LIVERPOOL ...	HOME
" 15	Blackburn Rovers ...	Away
" 22	(3)
" 29	Stoke City ...	Away
Feb. 5	BURNLEY ...	HOME
" 12	(4)
" 19	Chelsea ...	Away
" 26	TOTTENHAM H. ...	HOME
Mar. 5	(5)
" 12	EVERTON ...	HOME
" 19	Manchester United ...	Away
" 26	(6) NEWCASTLE UTD. ...	HOME
Apr. 2	Sheffield United ...	Away
" 5	WEST BROMWICH A. ...	HOME
" 9	LEEDS UNITED ...	HOME
" 11	West Bromwich Albion ...	Away
" 16	West Ham United ...	Away
" 23	(S.F.) SUNDERLAND ...	HOME
" 30	Aston Villa ...	Away
May 7	LEICESTER CITY ...	HOME
" 14	(Final)

Football Combination

© Football League Ltd., 1965-66

1965	Opponents	Venue	F. A.
Aug. 21	Plymouth Argyle ...	Away	4 1
" 28	NORTHAMPTON T. ...	HOME	5 0
Sept. 4	Chelsea ...	Away
" 11	SOUTHAMPTON ...	HOME
" 18	SWINDON TOWN ...	HOME
" 25	Ipswich Town ...	Away
Oct. 2	SHREWSBURY TOWN ...	HOME
" 9	Tottenham Hotspur ...	Away
" 16	NORWICH CITY ...	HOME
" 23	West Ham United ...	Away
" 30	COVENTRY CITY ...	HOME
Nov. 6	Leicester City ...	Away
" 13	CARDIFF CITY ...	HOME
" 20	Peterborough United ...	Away
" 27	FULHAM ...	HOME
Dec. 4	Norwich City ...	Away
" 11	TOTTENHAM H. ...	HOME
" 14	Coventry City ...	Away
" 27	Southampton ...	Away
1966			
Jan. 1	WEST HAM UNITED ...	HOME
" 5	Cardiff City ...	Away
" 15	LEICESTER CITY ...	HOME
" 22
" 29	PLYMOUTH ARGYLE ...	HOME
Feb. 5	Northampton Town ...	Away
" 12	Nottingham Forest ...	Away
" 19	CHELSEA ...	HOME
" 26
Mar. 5	NOTTINGHAM FOR. ...	HOME
" 8	Swindon Town ...	Away
" 19	IPSWICH TOWN ...	HOME
" 26	Shrewsbury Town ...	Away
Apr. 2	PETERBOROUGH U. ...	HOME
" 9	Fulham ...	Away
" 16	Crystal Palace ...	Away
" 23
" 30	CRYSTAL PALACE ...	HOME
May 7
" 14

Metropolitan League

1965	Opponents	Venue	F. A.
Aug. 21	WOODFORD TOWN ...	HOME	2 1
" 24	BARNET ...	HOME	2 0
" 28	CHATHAM TOWN ...	HOME	1 0
" 31	HATFIELD TOWN ...	HOME	1 1
Sept. 4	DARTFORD ...	HOME
" 11	METROPOLITAN POL. ...	HOME
" 18	STEVENAGE TOWN ...	HOME
" 25	BRENTWOOD TOWN ...	HOME
" 29	Charlton Athletic... ..	Away
Oct. 2	SHEPPEY UNITED ...	HOME
" 9	Stevenage Town ...	Away
" 23	Wimbledon ...	Away
" 27	West Ham United ...	Away
" 30	Hatfield Town ...	Away
Nov. 6	Sheppey United ...	Away
" 13	Chelmsford City ...	Away
" 20	Bedford Town ...	Away
" 27	Metropolitan Police ...	Away
Dec. 4	Dartford ...	Away
" 11	Woodford Town ...	Away
" 18	BURY TOWN ...	HOME
" 27	Chertsey Town ...	Away

1966	Opponents	Venue	F. A.
Jan. 1	WIMBLEDON ...	HOME
" 8	ST. NEOT'S TOWN ...	HOME
" 15	Bury Town ...	Away
" 22	Chatham Town ...	Away
" 29	Brentwood Town ...	Away
Feb. 5	CHARLTON ATHLETIC ...	HOME
" 12	St. Neot's Town ...	Away
" 19	Barnet ...	Away
" 26
Mar. 5	TOTTENHAM H. ...	HOME
" 12
" 16	Tottenham Hotspur ...	Away
" 19
" 26	CHELMSFORD CITY ...	HOME
Apr. 2
" 9	CHERTSEY TOWN ...	HOME
" 16	DUNSTABLE TOWN ...	HOME
" 23	WEST HAM UNITED ...	HOME
" 30	BEDFORD TOWN ...	HOME
May 7	Dunstable Town ...	Away

HALF-TIME SCOREBOARD

FIRST DIVISION

A	Blackburn v. A. Villa	F	Leicester v. Sunderland
B	Blackpool v. Liverpool	G	Man. Utd. v. Stoke City
C	Everton v. Burnley	H	Newcastle v. North'pton
D	Fulham v. Tottenham	J	Sheff. Utd. v. West Ham
E	Leeds Utd. v. Nottm. For.	K	W.B.A. v. Sheff. Wed.

SECOND DIVISION

L	Birmingham v. Charlton	P	Leyton Orient v. Preston
M	Bolton v. Portsmouth	Q	Middlesbro' v. Crystal P.
N	Cardiff v. Wolves	R	Southampton v. Bury

THIRD DIVISION

S	Brentford v. York	U	Millwall v. Oldham
T	Hull City v. Q.P.R.	V	Peterborough v. Watford

FOURTH DIVISION

W	Bradford C. v. Colch'ter	X	Luton Town v. Newport
---	--------------------------	-------	---	-----------------------	-------

NEXT MATCHES AT THIS STADIUM

FOOTBALL COMBINATION

SOUTHAMPTON

Saturday, 11th September

KICK-OFF 3 p.m.

FOOTBALL LEAGUE

NOTTINGHAM FOREST

Tuesday, 14th September

KICK-OFF 7.30 p.m.

FOOTBALL COMBINATION

SWINDON TOWN

Saturday, 18th September

KICK-OFF 3 p.m.

Reserved seats may be booked for League matches, price 12/6, 15/- and 20/-. Applications may be made in writing but not more than 21 days in advance of the fixture.