



Winners of European Cup-Winners' Cup 1971

Chelsea



Football League Division One—Season 1971/72

Saturday, 22nd April

NEWCASTLE UNITED

Kick-off 3 p.m.



OFFICIAL PROGRAMME 5P

Chelsea

Colours:
Shirts: Royal Blue.
Shorts: Royal Blue with
White Seam.
Stockings: White.



Newcastle

Colours:
Shirts: Black & White Stripes.
Shorts: Black.
Stockings: Black with White Top.

PETER
BONETTI — **1** —

PADDY
MULLIGAN — **2** —

RON
HARRIS — **3** —

JOHN
HOLLINS (*Captain*) — **4** —

JOHN
DEMPSEY — **5** —

DAVID
WEBB — **6** —

CHRIS
GARLAND — **7** —

STEVE
KEMBER — **8** —

TOMMY
BALDWIN — **9** —

ALAN
HUDSON — **10** —

CHARLIE
COOKE — **11** —

— **Substitute** —

IAM
McFAUL

DAVID
CRAIG

FRANK
CLARK

TOMMY
GIBB

PAT
HOWARD

BOBBY
MONCUR (*Captain*)

STEWART
BARROWCLOUGH

TONY
GREEN

MALCOLM
MACDONALD

JOHN
TUDOR

ALEX
REID

Linesman (Red Flag):

Mr. J. A. Tree
(Redhill, Surrey)

Referee:

**Mr. RAY
TOSELAND**
(Kettering)

Linesman (Orange Flag):

Mr. W. G. Cleere
(High Wycombe)



THE CHELSEA FOOTBALL & ATHLETIC CO. LTD.

(Founded 1905)

Registered Address
STAMFORD BRIDGE GROUNDS,
FULHAM ROAD, LONDON SW6
(Tel: 01-385 5545)

PRESIDENT

The Right Hon. Earl Cadogan, M.C.,
D.L.

BOARD OF DIRECTORS

J. B. Mears (Chairman)
Viscount Chelsea (Vice-Chairman)
L. J. Mears
G. M. Thomson
R. S. Attenborough, C.B.E.

Secretary

A. W. Green

Team Manager

D. Sexton

Trainer

H. Medhurst

Hon. Medical Officers

Dr. W. C. Marshall
Dr. J. Vyse

COLOURS

Shirts: Royal Blue. Shorts: Royal Blue
with White Seam.
Stockings: White.

HONOURS

Football League Champions 1955
F.A. Charity Shield Winners 1955
Football League Cup Winners 1965
F.A. Cup Winners 1970
European Cup-Winners' Cup 1971
Won promotion to Div. 1 1907, 1912,
1930, 1963
F.A. Youth Cup Winners 1960, 1961

The Talk of Stamford Bridge

A WELL-EARNED point came at Southampton on Tuesday night after the disappointment of the first 22 minutes at Tottenham last Saturday, when we conceded three goals on what was decidedly "one of those days". Spurs certainly showed how to take chances and, with Peter Osgood going off injured soon afterwards, there was never much prospect of our survival. The only consolation was that the "goals against" were pegged in the second half. Good to see Tommy Baldwin back on the scoresheet at Southampton, where we twice came from behind in the closing stages.

* * *

Four to go: After three consecutive away fixtures—Wolves, Tottenham and Southampton—we complete the season's list of first-team home matches with two games in three days. This afternoon we welcome Newcastle United, hoping to improve on the 0-0 draw we played at St. James's Park in December, and on Monday night we meet Stoke City here in the League match that was postponed on March 4 because of our League Cup Final date with Stoke at Wembley that day. The two First Division fixtures then remaining will both be away. Please note that our visit to West Bromwich, originally dated for the coming Wednesday, has been switched to Thursday night instead. Our final match, away to Leeds United, has been postponed from next Saturday because of the England v. West Germany game at Wembley, and at the time of writing we are waiting for the Football League to decide the re-arranged date. Leeds, of course, play in the F.A. Cup Final on May 6, so our last fixture of the season could decide the League Championship . . . or even the Double!

* * *

Progress report: Eddie McCreadie, who suffered a double fracture of the cheekbone when playing in the Reserves at Bristol Rovers at the end of February, made his comeback last Saturday morning in the Combination match drawn 2-2 at home to Spurs. Peter Houseman resumed

FRONT COVER SHOT

CHRIS GARLAND battles it out with Ralph Coates at Tottenham last Saturday. And in response to a correspondent who asked whether Chris is naturally left-footed or right, the answer, says the player himself, is "right" . . . even though he did score with a spectacular left-footer the previous time we were at White Hart Lane in the League Cup semi-final in January.

full training on Monday following a groin injury received in the previous week's Reserve game at Ipswich. Defender Derek Vaughan is going into hospital with a suspected slipped disc and may need an operation. News of two other Chelsea casualties, Peter Osgood and Ian Hutchinson, accompanies pictures elsewhere in today's programme.

Barbados tour: We are due to leave on Monday, May 15, for a two-week visit to Barbados. Three matches will be played, all against the Barbados National side—on Thursday, May 18, Saturday, May 20 and Tuesday, May 23. We return home on May 30.

End of a run: The sequence of five successive League wins that ended at Tottenham last Saturday was our best for three years. The last time we had won five First Division games in a row was in February—March 1969. That run also ended at . . . White Hart Lane.

IMPORTANT NOTE TO SEASON-TICKET HOLDERS

WITHIN the next two weeks details will be announced regarding arrangements for Season-ticket holders next season.

Please do not write to the Club meanwhile, as all Season-ticket holders will be notified by post of arrangements for 1972-73.

But if you have not received notification by May 13, please communicate with the Ticket Office immediately.

CHELSEA v. NEWCASTLE UNITED

Past League Results					
Season	Home	Away	Season	Home	Away
1907-08	2-0	0-1	1951-52	1-0	1-3
1908-09	1-2	3-1	1952-53	1-2	1-2
1909-10	2-1	0-1	1953-54	1-2	1-1
1912-13	1-0	2-3	1954-55	4-3	3-1
1913-14	0-1	0-1	1955-56	2-1	1-1
1914-15	0-3	0-2	1956-57	6-2	2-1
1919-20	0-0	0-3	1957-58	2-1	3-1
1920-21	2-0	0-1	1958-59	6-5	2-1
1921-22	1-1	0-1	1959-60	2-2	1-1
1922-23	3-0	0-0	1960-61	4-2	6-1
1923-24	1-0	1-2	1962-63	4-2	0-2
1930-31	1-1	0-1	1965-66	1-1	1-0
1931-32	4-1	1-4	1966-67	2-1	2-2
1932-33	0-1	0-2	1967-68	1-1	1-5
1933-34	2-1	2-2	1968-69	1-1	2-3
1948-49	2-3	2-2	1969-70	0-0	1-0
1949-50	1-3	2-2	1970-71	1-0	1-0
1950-51	3-1	1-3	1971-72	Today	0-0

(Chelsea's score given first in each case)

Summary

	P	W	D	L	F	A	Pts
Home	35	19	8	8	65	45	46
Away	36	9	9	18	43	57	27
Total	71	28	17	26	108	102	73

NEWCASTLE'S RESULTS THIS SEASON (Numbered in sequence order)

FOOTBALL LEAGUE

Home	Away
3. Liverpool .. W 3-2	1. C. Palace .. L 0-2
4. Huddersfield D 0-0	2. Tottenham D 0-0
7. West Ham D 2-2	5. Coventry .. L 0-1
11. Wolves .. W 2-0	6. Leeds .. L 1-5
14. Derby .. L 0-1	9. Man. City L 1-2
17. C. Palace .. L 1-2	12. Ipswich .. D 0-0
19. Man. Utd. L 0-1	16. Arsenal .. L 2-4
22. S'th'mptn W 3-1	20. Everton .. L 0-1
24. Nott'm. F. W 2-1	23. Leicester .. L 0-3
27. Chelsea .. D 0-0	26. Stoke .. D 3-3
31. Sheff. Utd. L 1-2	29. West Brom. W 3-0
33. Coventry .. W 4-2	30. West Ham W 1-0
34. Tottenham W 3-1	32. Wolves .. L 0-2
39. Everton .. D 0-0	36. Huddersfield D 0-0
41. Leicester .. W 2-0	38. Man. Utd. W 2-0
42. Arsenal .. W 2-0	40. S'th'mpton W 2-1
44. Man. City D 0-0	43. Liverpool L 0-5
47. Ipswich .. L 0-1	45. Sheff. Utd. L 0-1
49. Leeds .. W 1-0	46. Derby .. W 1-0
	48. Nott'm. F. L 0-1

Goalscorers: Macdonald 20, Tudor 6, Hibbitt 3, Barrowclough 2, Busby 2, Cassidy 2, Craig 1, Dyson 1, Gibb 1, Green 1, Natrass 1, Smith 1, Opponent 1. Total: 42.

F.A. CUP

Home	Away
35. Hereford .. D 2-2	37. Hereford .. L 1-2

Goalscorers: Macdonald 2, Tudor 1. Total: 3.

LEAGUE CUP

Home	Away
8. Halifax .. W 2-1	15. Arsenal .. L 0-4

Goalscorers: Cassidy 1, Macdonald 1. Total: 2.

TEXACO CUP

Home	Away
13. Hearts .. W 2-1	10. Hearts .. L 0-1
21. Coventry .. W 5-1	18. Coventry .. D 1-1
28. Derby .. L 2-3	25. Derby .. L 0-1

Goalscorers: Macdonald 4, Tudor 2, Barrowclough 1, Howard 1, Natrass 1, Opponent 1. Total: 10.

TABLES, APPEARANCES & GOALSCORERS

FOOTBALL LEAGUE—DIVISION I

	P	W	D	L	F	A	W	D	L	F	A	Pts
Derby	40	15	4	1	42	10	8	6	6	26	21	56
Man. City	41	15	3	2	46	15	7	8	6	29	30	55
Liverpool	39	16	3	1	46	16	7	5	7	16	13	54
Leeds	39	16	4	0	52	10	6	5	8	17	19	53
Tottenham	39	15	3	2	41	10	2	9	8	16	29	46
Arsenal	37	13	1	3	31	10	6	6	8	21	27	45
CHELSEA	38	11	6	2	36	18	6	5	8	17	23	45
Man. Utd.	39	12	2	6	36	26	6	7	6	30	32	45
Sheff. Utd.	40	9	8	3	38	26	6	4	10	20	33	42
Wolves	38	9	7	3	32	20	6	4	9	26	33	41
Ipswich	41	7	8	6	19	19	4	8	8	20	32	38
Leicester	40	8	6	6	17	11	4	7	9	20	31	37
N'WC'TLE	39	9	5	5	26	16	5	4	11	16	31	37
West Ham	40	9	6	5	30	19	2	6	12	15	30	34
Everton	40	8	8	4	27	16	1	8	11	8	30	34
Coventry	40	7	10	3	27	22	2	5	13	17	43	33
Stoke	36	6	8	5	24	23	4	4	9	13	24	32
West Brom.	38	5	7	7	18	22	6	3	10	17	26	32
S'th'mpt'n	40	8	4	8	31	28	4	2	14	21	51	30
Crystal P.	39	3	7	9	24	31	5	5	11	13	33	26
Huddersf'd	40	4	7	9	12	21	2	5	13	15	37	24
Nottm. F.	39	6	3	10	24	26	2	4	14	21	51	23

Figures in brackets in opposite column represent appearances as substitute.

FOOTBALL COMBINATION

	P	W	D	L	F	A	Pts
Tottenham Hotspur	36	23	11	2	72	16	57
Oxford United	39	17	15	7	55	40	49
Ipswich Town	38	17	11	10	80	49	45
Crystal Palace	37	18	9	10	60	48	45
Leicester City	37	17	10	10	65	46	44
Queen's Park Rangers	37	15	12	10	67	41	42
Bristol City	37	15	10	12	53	43	40
West Ham United	35	15	9	11	59	47	39
Swindon Town	37	14	11	12	65	64	39
Arsenal	38	13	10	15	57	50	36
Southampton	35	13	9	13	39	40	35
Cardiff City	36	14	6	16	49	43	34
Swansea City	35	12	10	13	38	53	34
Birmingham City	35	11	11	13	35	45	33
CHELSEA	38	10	12	16	44	51	32
Norwich City	36	12	6	18	40	56	30
Fulham	37	9	12	16	37	55	30
Bournemouth & B.	37	8	9	20	35	61	25
Plymouth Argyle	38	8	8	22	37	80	24
Reading	34	7	7	20	30	76	21

SOUTH-EAST COUNTIES LEAGUE—DIV. I

	P	W	D	L	F	A	Pts
Arsenal	29	19	7	3	62	14	45
Tottenham	29	20	3	6	67	33	43
Millwall	27	15	7	5	61	24	37
CHELSEA	28	15	7	6	53	27	37
Crystal Palace	28	15	4	9	64	43	34
West Ham United	28	14	5	9	61	47	33
Fulham	28	11	9	8	34	35	31
Luton Town	28	12	5	11	46	44	29
Ipswich Town	28	10	8	10	46	27	28
Queen's Park Rangers	27	9	8	10	30	31	26
Charlton Athletic	27	8	7	12	38	48	23
Gillingham	25	8	4	13	26	44	20
Watford	26	5	6	15	28	69	16
Orient	26	4	7	15	32	59	15
Reading	25	4	2	19	16	73	10
Brentford	27	3	3	21	20	65	9

FOOTBALL LEAGUE

HOLLINS	38	KEMBER	21 (3)
HARRIS	37	BALDWIN	16
WEBB	37	GARLAND	13 (1)
OSGOOD	36	PHILLIPS	7
DEMPSEY	32	McCREADIE	6
HUDSON	32	HINTON	5 (1)
COOKE	31 (3)	SMETHURST	2
BONETTI	29	WELLER	2
BOYLE	24	POTRAC	1
HOUSEMAN	24 (1)	SHERWOOD	1
MULLIGAN	24	FEELY	— (1)

Goalscorers: Osgood 18, Hollins 11, Baldwin 8, Webb 4, Garland 3, Cooke 2, Kember 2, Dempsey 1, Houseman 1, Hudson 1, Mulligan 1, Weller 1. Total 53.

FOOTBALL LEAGUE CUP

HARRIS	9	BOYLE	6
HOLLINS	9	BALDWIN	5 (2)
HUDSON	9	DEMPSEY	5 (2)
OSGOOD	9	GARLAND	5
WEBB	9	MULLIGAN	5
BONETTI	8	HINTON	4
COOKE	7	McCREADIE	1 (1)
HOUSEMAN	7	PHILLIPS	1

Goalscorers: Baldwin 4, Hollins 4, Osgood 4, Garland 2, Hudson 2, Cooke 1, Houseman 1, Webb 1. Total 19.

F.A. CUP

BONETTI	3	OSGOOD	3
COOKE	3	WEBB	3
HARRIS	3	KEMBER	2 (1)
HOLLINS	3	DEMPSEY	2
HOUSEMAN	3	GARLAND	1
HUDSON	3	McCREADIE	1
MULLIGAN	3		

Goalscorers: Cooke 1, Dempsey 1, Hollins 1, Houseman 1, Osgood 1, Webb 1. Total 6.

EUROPEAN CUP-WINNERS' CUP

BONETTI	4	WEBB	4
BOYLE	4	BALDWIN	3
COOKE	4	HOUSEMAN	3
HARRIS	4	HINTON	2 (2)
HOLLINS	4	DEMPSEY	2
HUDSON	4	MULLIGAN	1 (1)
OSGOOD	4	McCREADIE	1

Goalscorers: Osgood 8, Baldwin 4, Houseman 3, Hollins 2, Hudson 2, Webb 2, Harris 1. Total 22.

FOOTBALL COMBINATION

POTRAC	31	GARLAND	7
DROY	30	MORRISON	7 (3)
BROLLY	29 (1)	W. SMITH	6
FEELY	26 (2)	MULLIGAN	5
LOCKE	26	SMETHURST	4
PHILLIPS	22	SPONG	4 (1)
VAUGHAN	21 (3)	G. WILKINS	4 (1)
HOUSTON	19	B. BASON	3
STANLEY	17 (1)	DEMPSEY	3
HINTON	17	D. GRADI	3 (2)
BRITTON	15	DAVIS	2 (1)
PERKINS	15	PRICE	2 (1)
CRAKER	14 (3)	BONETTI	2
FINNIESTON	14	COOKE	2
SHERWOOD	13	WELLER	2
LAWRENCE	13	HOUSEMAN	2
McCREADIE	10	D. EBANKS	1
BARRY	9 (2)	HUDSON	1
BOYLE	8	HUTCHINSON	1
BALDWIN	7	KEMBER	1

Goalscorers: Potrac 14, Feely 7, Brolly 4, Finnieston 3, Stanley 3, Vaughan 3, Baldwin 1, Barry 1, Britton 1, Craker 1, Droy 1, Hutchinison 1, Lawrence 1, Smethurst 1, Opponents 2. Total 44.

In off the post

Your letters should be of not more than 150 words and addressed to "In off the Post", Chelsea F.C., Fulham Road, London, S.W.6.

U.E.F.A. CUP CHANCES

I HAVE been trying to calculate Chelsea's chances of qualifying for the U.E.F.A. Cup next season. Are the answers to the following questions known?

1. If Stoke win the F.A. Cup would Chelsea be entitled to their place in the U.E.F.A. Cup (in the past losing F.A. Cup Finalists have been placed in the Cup-Winners' Cup, when the F.A. Cup winners are qualified for the European Cup)?

2. If Spurs or Wolves win the U.E.F.A. Cup would England be entitled to four or five representatives?

3. If Spurs won the U.E.F.A. Cup and qualified for next season's competition as holders would this de-bar Chelsea from qualifying on League position under the one-City-one-team rule?

P. H. S. Hatton.

Westfield College,
(University of London),
Hampstead, N.W.3 7ST

● *As we understand the position, England is entitled to a maximum of four entries in the U.E.F.A. Cup (including the League Cup Winners unless they qualify for either of the other European tournaments). Also, we MUST finish top London Club to retain our hopes of qualifying . . . but at the time of writing it is still not clear whether the winners of the U.E.F.A. Cup will, in future, automatically qualify for entry the following season. Point 1 above does not arise, of course, following Stoke's F.A. Cup semi-final defeat on Wednesday.*

FINDING THEM YOUNG!

THERE cannot be a Chelsea supporter much younger than my nephew,

David. He was already wrapped in Chelsea blue when he was just ten days old, and he attended his first match (East Stand G, row F, seat 3) against West Ham at the grand old age of nine weeks. He wore a blue and white bobble-hat, 12-inch scarf and tiny football boots.

However, his connection with Chelsea started even earlier. While still in the operating theatre, after being told she'd had a boy, my sister announced to astonished nurses and doctor: "He's going to play for Chelsea!" How's that . . . a Chelsea recruit just minutes old?

Still, it had to happen—the house already contains a cat named Chelsea and a tortoise called Baldwin.

And when Master David Shilton comes to another match at The Bridge before the end of the season, let's hope David Webb can oblige with a hat-trick!

E. A. Kingston (Mr.).

1 Battersea Rise, London, S.W.11.

GOAL POWER

WITH reflection on Chelsea "scoring power" this season without Ian Hutchinson, I feel they must go out and buy a striking forward.

It seems to me that if Peter Osgood doesn't find the net and Chelsea do score, it is nearly always someone coming from the back who does, i.e. Hollins, Webb.

If we want to be consistently successful this situation cannot continue. We must have more than one forward getting double figures.

J. Burford.

21 Camberley Crescent,
Ettingshall Park Farm Estate,
Wolverhampton.

YOUR HELP IS NEEDED

THE Chelsea Friends of the Imperial Cancer Research Fund are organizing a Concert at the Chelsea Old Town Hall, King's Road, S.W.3 on May 17th, when Mr. Ian Wallace, the radio and TV personality, has generously donated his services for an evening of song. A free glass of wine will be served in the interval and the evening promises to be great fun.

My Committee wonders whether you could mention our function in your publication. We may then be able to sell tickets (£2 Stalls, £1 Gallery) to your supporters.

I need hardly tell you how desperately money is needed to fight cancer, and may I also bring it to attention that a house-to-house collection will take place from June 7-13 as part of our National Appeal 1972.

Gloria Stacey.

(Chairman, Concert Committee).
Imperial Cancer Research Fund.

FROM "OUR MAN" IN BRAZIL

I AM an ardent Chelsea supporter who has been living in Brazil for seven months. I've managed to follow the Blues this season through friends sending me out the results, and I was very disappointed at Chelsea losing all three Cups, but there is always next season.

I have been to see all the top Brazilian stars, including Pele, Rivelino and Jairzinho. The Maracana, with crowds of 100-150,000, and a samba band playing constantly throughout the game, is much noisier than The Bridge, but the atmosphere is lost in such a large ground.

I have spoken a lot about Chelsea to my friends out here, and I am sure the Blues would be very welcome if they ever visited on a tour.

Jeff Warren.

R. Miguel Lemos, 80,
Apt. 1001,
Copacabana Posto 5,
Rio de Janeiro, Brazil.

CHEERS FROM "CHIP"

IN response to your recent interest shown in pets with a "party piece" connected with Chelsea, my pet budgie "Chip", a true blue, has consistently been squawking for the past five years "Chelsea for the Cup".

SUPPORTERS' CLUB RIVER TRIP

Saturday, 3rd June

Leaving Westminster Pier 7 p.m.
and returning at 11 p.m.

Discotheque, Licensed Bar and
Buffet.

Tickets:

(£1.60p to Members,

£1.90p to Non-Members)

Available from the Supporters' Club
Headquarters, 547, Fulham Road,
S.W.6

or from

**J. Coombes, Social Officer,
103, Pulborough Road, London,
S.W.18**

(Please quote Membership number
and enclose a stamped addressed
envelope. All cheques and postal
orders should be made payable to the
Chelsea Supporters' Club)

His persistent outbursts are a sore point this season but, having spurred the team on to two tremendous cup wins in his time (in his own little way), he hasn't done too badly.

It is a great pity that he can't be present on match days at Stamford Bridge as I am sure he would make a valuable contribution, in the way of vocal support!

B. W. Junemann.

"Woodside", Cromwell Road,
Worcester Park, Surrey,
KT4 7JR

WEDDING BELLS

COULD you please find a space on your letters page to send best wishes and congratulations to Moira and Ray, who are getting married on June 10.

They are season-ticket holders in the East Stand.

Eileen & Ted.

(Mrs. & Mr. E. McDonald)

● *Yes indeed—best wishes from Chelsea F.C. to Moira and Ray, and may the sun shine on them on June 10.*

FIRST TEAM

RECORD CARD - 1971-72

FOOTBALL LEAGUE Goalscorers shown in small numerals. P = Penalty. S = Substitute. * = Player replaced by substitute

Date	Opponents	Venue	Result	Att.	Pts. Ttl.	Lge. Posn.	BONETTI	MCCREADIE	HARRIS	HOLLINS	DEMSEY	WEBB	SMETHURST	HUDSON	OSGOOD	BALDWIN	HOUSEMAN	PHILLIPS	BOYLE	COOKE	WELLER	MULLIGAN	GARLAND	HINTON	KEMBER	SHERWOOD	POTRAC	FEELY	
Aug. 14	Arsenal	Away	L 0-3	49,174	0	—	1	2	3	4	5	6	7	8	9	10	11	1	3	5									
" 18	MAN. UTD.	HOME	L 2-3	54,763	0	—	2	2	6	4	5	6	7	8	9	10	11	1	8	11									
" 21	MAN. CITY	HOME	D 2-2	38,425	1	19th	2	2	3	4	5	6	7	8	9	10	11	1	8	11	7								
" 24	Everton	Away	L 0-2	38,994	1	21st	2	2	3	4	5	6	7	8	9	10	11	1	8	11	7								
" 28	Huddersfield	Away	W 2-1	15,030	3	18th			3	4P	5	6	7	8	9	10	11	1	11	7	2								
Sept. 1	WEST BROM.	HOME	W 1-0	29,931	5	16th			3	4	5	6	7	8	9	10	11	1	11	7	2								
" 4	COVENTRY	HOME	D 3-3	35,459	6	15th			3	4	5	6	7	8	9	10	11	1	11	7	2								
" 11	West Ham Utd.	Away	L 1-2	36,866	6	16th			3	4	5	6	7	8	9	10	11	1	10	7	2								
" 18	DERBY C.	HOME	D 1-1	42,872	7	15th			3	4	5	6	7	8	9	10	11	1	2	7	7								
" 25	Sheffield United	Away	L 0-1	40,651	7	18th			3	4	5	6	7	8	9	10	11	1	2	7	7								
Oct. 2	WOLVES	HOME	W 3-1	42,706	9	15th			3	4	5	6	7	8	9	10	11	1	2	7	7								
" 9	Liverpool	Away	D 0-0	48,464	10	15th			3	4	5	6	7	8	9	10	11	1	2	7	7								
" 16	ARSENAL	HOME	L 1-2	52,338	10	15th			3	4	5	6	7	8	9	10	11	1	2	7	7								
" 23	SOUTHAMPTON	HOME	W 3-0	38,940	12	14th			3	4P	5	6	7	8	9	10	11	1	2	7	7								
" 30	Leicester City	Away	D 1-1	36,574	13	13th			3	8	5	6	7	8	9	10	11	1	4	11	7								
Nov. 6	NOTT'M. F.	HOME	W 2-0	25,812	15	12th			3	4	5	6	7	8	9	10	11	1	2	7	7								
" 13	Stoke City	Away	W 1-0	22,190	17	11th			3	4	5	6	7	8	9	10	11	1	2	7	7								
" 20	Crystal Palace	Away	W 3-2	34,637	19	8th			3	4	5	6	7	8	9	10	11	1	2	7	7								
" 27	TOTTENHAM H.	HOME	W 1-0	52,581	21	9th			3	4	5	6	7	8	9	10	11	1	2	7	7								
Dec. 4	Newcastle Utd.	Away	D 0-0	37,562	22	9th			3	4	5	6	7	8	9	10	11	1	2	7	7								
" 11	LEEDS UTD.	HOME	D 0-0	45,867	23	9th			3	4	5	6	7	8	9	10	11	1	2	7	7								
" 17	Coventry City	Away	D 1-1	22,424	24	10th			3	4	5	6	7	8	9	10	11	1	2	7	7								
" 27	IPSWICH T.	HOME	W 2-0	43,896	26	10th			2	4	5	6	7	8	9	10	11	3	2	5	6								
1972																													
Jan. 1	Derby County	Away	L 0-1	33,663	26	10th			3	4	5	6	7	8	9	10	11												
" 8	HUDDERSF'LD	HOME	D 2-2	30,801	27	10th			3	10	5	6*	7	8	9	10	11												
" 22	Manchester Utd.	Away	W 1-0	55,927	29	9th			3	4	5	6	7	8	9	10	11			8									
" 29	EVERTON	HOME	W 4-0	38,558	31	9th			3	4P	5	6	7	8	9	10	11			8									

O W N & O a I

FOOTBALL LEAGUE—continued

Date	Home	Result	Attendance	Goals	Penalty	Substitute	Player replaced by substitute
Feb. 19	LEICESTER C.	HOME W2-1	33	38,783	6	4*	5
Mar. 11	LIVERPOOL	HOME D 0-0	34	38,691	6	4	5
" 14	Nottingham For.	Away L 1-2	34	13,346	2	4P	5
" 18	Manchester City	Away L 0-1	34	53,322	2	4	5
" 25	WEST HAM U.	HOME W3-1	36	45,137	6	4	5
" 29	SHEFFIELD U.	HOME W2-0	38	28,444	6	4	5
Apr. 1	Ipswich Town	Away W2-1	40	24,325	6	4	5
" 8	CRYSTAL PAL.	HOME W2-1	42	34,105	6	4	5
" 12	Wolverhampton	Away W2-0	44	24,566	6	4	5
" 15	Tottenham H.	Away L 0-3	44	45,799	6	4	5
" 18	Southernhampton	Away D 2-2	45	24,933	3	4	5
" 22	NEWCASTLE	HOME					
" 24	STOKE CITY	HOME					
" 27	West Bromwich	Away					
Undated	Leeds United	Away					

CUP MATCHES Goalscorers shown in small numerals. P = Penalty. S = Substitute. * = Player replaced by substitute.

Date	Round and Opponents	Venue	Result	Attendance	Rec.	Boyle	Hinton	Webb	Hollins	Harris	Hudson	Garland	Houseman	Dempsey	Cooke	Baldwin	McCreadie	Phillips	Kember
Sept. 8	(2) PLYMOUTH	HOME	W2-0	23,011	£8,967	1	2	3	4	1	3	10	9	2	7	2	8		
Oct. 6	(3) Nott'm. Forest (Rep.) NOTT'M. F.	Away	D 1-1	16,811	—	1	1	5	4	3	7	10	11	5	7	8	10		
" 11	(4) BOLTON W.	HOME	D 1-1	27,679	£9,610	1	2	3	4	3	10	11	11	5	7	8	10		
Nov. 8	(Rep.) Bolton W.	Away	W6-0	29,805	£11,228	1	2	3	8	3	10	11	11	5	7	8	10		
" 17	(5) Norwich City	HOME	W1-0	35,927	—	1	2	3	4 ^{tp}	3	10	11	11	5	7	8	10		
Dec. 22	(Sf) TOTTENHAM	HOME	W3-2	43,330	£19,117	1	2	3	4P	3	10	11	11	5	7	8	10		
Jan. 5	(Sf) Tottenham	Away	D 2-2	52,755	—	1	2	3	4	3	10	11	11	5	7	8	10		
Mar. 4	(F) Stoke City	Wemb'ly	L 1-2	100,000	£132,361	1	2*	3	4	3	10	11	11	5	7	8	10		
Sept. 15	(1) Jeunesse Hautcharage (Lux.)	Away	W8-0	13,000	—	1	1	3	4	3	10	11	11	5	7	8	10		
" 29	(1) JEUNESSE H.	HOME	W13-0	27,621	£10,449	1	1	3	4P	3	10	11	11	5	7	8	10		
Oct. 20	(2) Atvidaberg (Sweden)	Away	D 0-0	10,212	—	1	1	3	8	3	10	11	11	5	7	8	10		
Nov. 3	(2) ATVIDABERG (Lost on away goal)	HOME	D 1-1	28,071	£11,843	1	2*	3	8	3	10	11	11	5	7	8	10		
F.A. CUP																			
Jan. 15	(3) Blackpool	Away	W1-0	22,135	—	1	2	3	4	3	10*	11	11	5	7	8	10		
Feb. 5	(4) BOLTON W.	HOME	W3-0	38,066	£17,310	1	2	6	4P	6	10	11	11	5	7	8	10		
" 26	(5) Orient	Away	L 2-3	30,329	—	1	2	3	4	6	10	11	11	5	7	8	10		

O W N G O A R



Above: Chris Garland shoots what proved to be our winner against Crystal Palace in the last home game a fortnight ago.

TWO MORE POINTS OFF PALACE

Right: And here's John Hollins, almost under the bar, scoring the opening goal against Palace right on half-time—his 18th of the season.





Above: Four days later, away to Wolves, we completed another double—helped by Chris Garland's goal after 50 seconds and this combined clearance by Ron Harris and Paddy Mulligan.



AND THEN A DOUBLE OVER WOLVES

Left: Peter Osgood takes a deserved bow ten minutes after half-time at Molineux. He's just made certain of victory with our second goal.

Football Combination

1971	Opponents	Venue	Result
Sat. Aug. 14	BOURNEM'TH	HOME	W 2-0
Tues. " 17	Swindon Town	Away	D 2-2
Wed. " 25	SWANSEA CITY	HOME	L 1-2
Sat. " 28	CARDIFF CITY	HOME	W 3-0
Tues. " 31	Birmingham City	Away	D 0-0
Sat. Sept. 4	Crystal Palace	Away	L 0-3
Wed. " 8	Bristol City	Away	L 1-4
Sat. " 11	ARSENAL	HOME	W 1-0
Wed. " 15	BIRMINGH'M C.	HOME	L 1-2
Wed. " 22	OXFORD U.	HOME	D 1-1
Sat. " 25	WEST HAM U.	HOME	W 2-1
Sat. Oct. 2	Bournemouth	Away	W 3-1
Wed. " 13	Oxford United	Away	L 1-2
Sat. " 23	Leicester City	Away	L 1-5
Sat. " 30	SOUTHAMPTON	HOME	D 1-1
Mon. Nov. 1	Fulham	Away	L 0-2
Sat. " 6	Norwich City	Away	D 0-0
Sat. " 13	BRISTOL ROV.	HOME	L 0-1
Sat. " 27	Tottenham H.	Away	L 0-2
Sat. Dec. 4	Q.P.R.	HOME	W 3-0
Wed. " 8	Reading	Away	L 0-2
Sat. " 18	FULHAM	HOME	L 0-1
1972			
Sat. Jan. 1	CRYSTAL PAL.	HOME	D 1-1
Wed. " 5	Cardiff City	Away	L 0-2
Sat. " 22	SWINDON T.	HOME	W 5-1
Sat. " 29	Swansea City	Away	W 1-0
Sat. Feb. 12	LEICESTER C.	HOME	L 1-2
Sat. " 19	Southampton	Away	W 2-0
Sat. " 26	NORWICH C.	HOME	W 1-0
Tues. " 29	Bristol Rovers	Away	L 0-1
Tues. Mar. 7	PLYMOUTH A.	HOME	D 0-0
Sat. " 11	Arsenal	Away	D 2-2
Mon. " 13	IPSWICH T.	HOME	L 1-2
Sat. " 18	BRISTOL CITY	HOME	D 0-0
Sat. " 25	West Ham United	Away	L 2-3
Sat. Apr. 8	Q.P.R.	Away	D 1-1
Tues. " 11	Ipswich Town	Away	D 2-2
Sat. " 15	TOTTENHAM H.	HOME	D 2-2
Sat. " 22	Plymouth Argyle	Away
Sat. " 29	READING	HOME

LONDON F.A. CHALLENGE CUP

Mon. Sept. 27 (1) West Ham U... Away L 0-1

F.A. YOUTH CUP

Wed. Nov. 24 (2) Orient .. Away D 0-0
 Mon. Dec. 6 (Rep.) ORIENT .. HOME W 3-0
 Mon. Jan. 3 (3) MILLWALL HOME W 3-2
 Mon. " 31 (4) CRYSTAL P. HOME W 3-0
 Tues. Feb. 22 (5) ASTON V. .. HOME D 1-1
 Mon. " 28 (Rep.) Aston Villa Away L 0-3

SOUTHERN JUNIOR FLOODLIT CUP

Tues. Oct. 5 (1) Brentford .. Away W 3-2
 Tues. Nov. 16 (2) Swindon Town Away D 1-1
 Wed. Dec. 15 (Rep.) SWINDON HOME W 2-0
 Tues. Mar. 28 (3) Southampton .. Away W 2-1
 Thur. Apr. 13 (Sf) ASTON VILLA Home W 1-0
 Mon. May 1 (F) COVENTRY HOME ..
 Fri. " 5 (F) Coventry .. Away

LONDON F.A. YOUTH CUP

Mon. Dec. 13 (1) WEST HAM.. HOME W 1-0
 Mon. Mar. 20 (Sf) MILLWALL HOME W 4-1
 Mon. Apr. 24 (F) Crystal Palace Away

Junior Fixtures

S.E. COUNTIES LEAGUE—DIVISION I

1971	Opponents	Venue	Result
Aug. 14	ORIENT	HOME	W 5-0
" 21	CRYSTAL PALACE	HOME	D 1-1
" 28	Reading	Away	W 4-2
Sept. 4	CHARLTON A.	HOME	W 2-0
" 11	Reading (Cup—1st Rd.)	Away	D 3-3
" 18	READING (Cup-Rep.)	HOME	W 4-0
" 25	GILLINGHAM	HOME	W 2-0
Oct. 2	West Ham United	Away	W 2-1
" 9	Q.P.R.	HOME	W 2-0
" 16	Ipswich (Cup—2nd Rd.)	Away	W 2-1
" 23	Millwall	Away	D 1-1
" 30	LUTON TOWN	HOME	D 1-1
Nov. 6	Tottenham Hotspur	Away	L 3-4
" 13	READING	HOME	W 5-1
" 20	Watford	Away	W 3-1
" 27	Luton Town	Away	W 3-2
Dec. 4	WEST HAM UTD.	HOME	D 1-1
" 11	ARSENAL	HOME	D 0-0
" 18	Q.P.R.	Away	W 5-0
1972			
Jan. 1	IPSWICH TOWN	HOME	D 0-0
" 8	Gillingham	Away	L 1-2
" 15	FULHAM	HOME	L 0-1
" 22	Brentford	Away	W 2-0
" 29	WATFORD	HOME	W 3-0
Feb. 5	Charlton Athletic	Away	W 2-0
" 7	ARSENAL (Cup—Sf)	HOME	D 0-0
" 12	Ipswich Town	Away	D 0-0
" 26	Orient	Away	W 2-1
Mar. 11	Arsenal	Away	L 0-4
" 18	Crystal Palace	Away	L 0-1
" 25	BRENTFORD	HOME	W 3-1
Apr. 8	TOTTENHAM H.	HOME	L 0-2
" 18	Fulham	Away	D 1-1
" 22	MILLWALL	HOME

S.E. COUNTIES LEAGUE—DIVISION II

Aug. 21	Charlton Ath. (Cup)	Away	D 3-3
" 28	ORIENT (Cup)	HOME	W 4-1
Sept. 4	WEST HAM U. (Cup)	HOME	W 3-0
" 11	CHARLTON A. (Cup)	HOME	D 0-0
" 18	Gillingham (Cup)	Away	L 0-3
Oct. 2	CRYSTAL P. Cup	HOME	L 2-3
" 9	West Ham U. (Cup)	Away	D 1-1
" 16	WEST HAM UTD.	HOME	W 1-0
" 23	Tottenham H. (Cup)	Away	L 0-1
Nov. 6	Orient (Cup)	Away	W 2-0
" 20	TOTTENHAM H. (Cup)	HOME	L 1-3
Dec. 4	Crystal Palace (Cup)	Away	L 0-2
" 18	Gillingham (Cup)	Away	W 5-1
Jan. 8	ORIENT	HOME	W 4-1
" 15	West Ham United	Away	D 1-1
" 22	CHARLTON A.	HOME	W 3-2
Feb. 12	Crystal Palace	Away	W 2-1
" 26	Gillingham	Away	W 4-0
Mar. 11	Tottenham Hotspur	Away	L 0-5
" 18	CRYSTAL PALACE	HOME	L 0-2
" 25	Charlton Athletic	Away	D 0-0
" 27	Orient (Cup-Sf)	Away	L 0-3
Apr. 15	TOTTENHAM	HOME	L 0-2
" 15	GILLINGHAM	HOME	W 2-1
" 22	Orient	Away

Home matches, on Saturdays, kick-off 11 a.m. are played at the Imperial Services Ground, Bishopsford Road, Mitcham, Surrey.

A BLOW FOR OSSIE . . . BUT IT MIGHT HAVE BEEN WORSE



We're three down in 22 minutes at Tottenham last Saturday, and a few minutes later things get worse as Peter Osgood is carried off with an injured left leg. But by Monday the news was brighter. The diagnosis was strained knee ligaments, not cartilage trouble, and Trainer Harry Medhurst was able to add the optimistic note: "He could play again before the season ends."



So there's hope that, before the curtain finally comes down on 1971-72 we shall see Ossie back in this sort of action, and that this won't prove his last shot of the season . . . one that produced a tremendous save by Spurs 'keeper Pat Jennings instead of the goal it deserved.

CFC
CFC
CFC

CLUB SHOP

CFC
CFC
CFC

OPEN today . . . and at every match. Buy from the **ONLY OFFICIAL CHELSEA SHOP**—better quality, lower prices and exclusive Club souvenirs unobtainable elsewhere.

Visit us today—inside the ground, facing Main Office block—before, during or after the game.

Or write for leaflet, which shows our full range of goods, to: Chelsea F.C. Shop, Stamford Bridge Grounds, Fulham Road, London, S.W.6.

THE CHELSEA MAGAZINE

IF you haven't yet bought **The Chelsea Magazine**, there's still time.

It's this season's re-styled Club Yearbook, with an all-colour cover and 32 pages packed with great contents.

There are more than 50 photographs . . . players' autographs . . . special features . . . charts, records, pen-pictures . . . all the facts and figures. . . .

You can buy **The Chelsea Magazine** here today—for only 20p.

CHELSEA POOLS ANNOUNCEMENT

IF you can't find an Agent in your locality, you can still enter the Chelsea Pool—by sending a cheque or postal orders for 70p. This will bring you the chance every week of winning the many big prizes in the Chelsea Pool.

Send your remittance, together with your name and address, to: Chelsea Pools Association, Chelsea F.C., Stamford Bridge Grounds, Fulham Road, London, S.W.6.

PRE-MATCH SPIN

Records played here on match-days are supplied by "Musicland" and can be obtained from their branch at 44 Berwick Street, London, W.1.

PROGRAMME SUBSCRIPTION SCHEME, 1972-73

SUPPORTERS wishing to have the Chelsea F.C. Programme sent to their home or to friends next season can do so for a subscription of £2.50p. including postage (£3 if abroad). Programmes will be sent for all first-team home fixtures in 1972-73, and will be despatched immediately after each match.

If you wish to take advantage of this service, please fill in the coupon below, enclose remittance and send to: **Programme Subscription, Chelsea Football Club, Stamford Bridge Grounds, Fulham Road, London, S.W.6.**

Please send each edition of the Chelsea F.C. Programme for Season 1972-73, for which I enclose remittance of £2.50p (£3 if abroad), to:

Name (Mr/Mrs/Miss)

Address

• If you do not wish to cut your programme, please write letter of application, enclosing remittance according to above instructions.

OUT OF THE FAT

MR Alec Cross, of Ranworth Close, Erith, is a keen Chelsea supporter. So keen in fact that he will not miss one of their matches—home or away.

After returning home from work, Mr. Cross was grilling a steak and frying chips, when his mind must have wandered from matters gastronomic to matters football. Without realising what he was doing he plunged one of his hands into the boiling fat.

Mr. Cross dashed off to hospital and soon after treatment was on the train for London and the Chelsea-Tottenham match.

When I saw him he had just returned from having his fingers dressed in hospital. But nothing could stop him talking about the wonders of Chelsea.

Mr. Cross is branch secretary of the Waterways Section of the Transport and General workers Union.

From the *Erith Observer & Kentish Times*



CHELSEA POOLS SECOND GREAT SEASON



Committee:

MR. J. B. MEARS (Chairman)
VISCOUNT CHELSEA
MR. L. J. MEARS
MR. G. M. THOMSON
MR. R. S. ATTENBOROUGH, C.B.E.
MR. D. SEXTON

Organiser and Secretary:

MR. GEOFF ABEL

CHELSEA F.C. POOLS ASSOCIATION

STAMFORD BRIDGE GROUNDS
FULHAM ROAD, LONDON S.W.6

01-385 3255

THE CHELSEA POOL does not close when we get to the end of the season's League football. We NEVER close! Our Pool goes on right through the summer to the start of next season, and from May 6 it will be based on Australian football.

And, as last summer showed, those high-scoring games in Australia mean MORE BIG SINGLE WINNERS in all sections of our Pool compared even with our own season.

So STAY IN THE CHELSEA POOL throughout the summer, and give yourself the continued chance of a big prize every week.

A lot of Chelsea Pool Members are going to have their summer holidays paid for by those Australian results . . . and YOU could be among them.

Call at the Pools Office (over the Club Offices) for full details about how to become a Member, or ring our Pools Organiser Geoff Abel and his staff on 385-3255.

They will also give you full details if you'd like to become a Chelsea Pools Agent . . . or you can receive them by post if you send in the form below.

Please return to:

Chelsea F.C. Pools Association, Stamford Bridge Grounds, Fulham Road, S.W.6.

I would like to help Chelsea Football Club by acting as an Agent for the "Chelsea Big Pool". Please send me details. I am over 18.

Name (Mr./Mrs./Miss)

Address

.

. County

I estimate I shall require tickets for members.

NEWCASTLE UNITED 1971-72



Back row: David Craig, Ian Mitchell (now Dundee Utd.), Stewart Barrowclough, Keith Burkinshaw (Coach), Martin Burleigh,
 Tommy Cassidy, Irving Natrass, Tommy Gibb.
Middle row: Wyn Davies (now Man. City), Keith Dyson (now Blackpool), John McNamee (now Blackburn), Malcolm Macdonald,
 John Tudor, Frank Clark, Jim Smith, Ollie Burton.
Front row: David Young, John Craggs (now Middlesbrough), Bobby Moncur, Joe Harvey (Manager), Alan Foggon (now Cardiff),
 Ben Arentoft (now Blackburn), Ron Guthrie.

FOCUS

on our

VISITORS

OVER the past year few clubs have made bigger changes in playing personnel than Newcastle United. The "revolution" began last May, when they paid their record fee of £185,000 to Luton Town to add the goal-power of Malcolm Macdonald to their ranks. Macdonald, one-time full-back with Fulham, has already proved the most exciting sharpshooter—especially left-foot—seen on Tyneside since Jackie Milburn.

He succeeded Wyn Davies, who moved to Manchester City for the start of the season, and by November there had been a whole string of departures from St. James's Park: Alan Foggon to Cardiff, John Craggs to Middlesbrough, Ben Arentoft and John McNamee to Blackburn, Gordon Hindson to Luton, Keith Dyson to Blackpool and Ian Mitchell to Dundee United.

There have been newcomers apart from Macdonald to the famous black-and-white stripes this season. Winger Terry Hibbitt was bought from Leeds last August. A month later Newcastle signed Barnsley centre-half Pat Howard, and in October they paid Blackpool £150,000 for Tony Green to open defences for Macdonald's powerful finishing. Another new forward arrival was Alex Reid from Dundee United.

THEIR PLAYERS

IAM McFAUL: N. Ireland goalkeeper (5 caps) signed from Linfield in November 1966. First-team regular with over 150 League appearances for United. Born Coleraine. 5 ft. 9½ in., 12 st.

DAVID CRAIG: Another Irish International (15 caps), he joined the club as a youth in 1960. Turned professional a year later and has over 200 first-team appearances to his credit. Born Belfast. 5 ft. 9½ in., 11 st. 13 lb.

FRANK CLARK: Has played more League games for the club (nearly 300) than any other present member of the staff. A former England Amateur International with Crook Town, he joined Newcastle in 1963. Born Highfield, Co. Durham. 6 ft. 0½ in., 12 st. 2 lb.

TOMMY GIBB: Driving midfield player signed from Partick Thistle for £35,000 in August 1968. Originally with Armadale Thistle, he has rarely been out of the first-team in four seasons with Newcastle. Born Bathgate. 5 ft. 10¼ in., 11 st. 1 lb.

PAT HOWARD: Centre-back, aged 23, signed from Barnsley last August for £21,000. Since making his First Division debut for Newcastle in September has been an impressive and regular member of the defence. Born Dodworth. 5 ft. 11 in., 12 st.

BOBBY MONCUR: Club captain and Scottish International defender (11 caps). Returned in February after missing the first half of the season with a serious leg injury. Joined Newcastle from school in 1960 and has made over 200 League appearances. Born Perth. 5 ft. 9¼ in., 10 st. 9 lb.

STEWART BARROWCLOUGH: Newcastle beat several other big clubs when signing this promising winger from Barnsley in June 1970 for £40,000. Is 20 and has appeared regularly in the first-team this season. Born Barnsley. 5 ft. 7 in., 9 st.

TONY GREEN: Stylish Scottish International midfield player (3 caps) who cost £150,000 from Blackpool last October. Began with Albion Rovers and joined Blackpool in May 1967. Born Glasgow. 5 ft. 7 in., 10 st. 13 lb.

MALCOLM MACDONALD: "Super-Mac" arrived last May from Luton at Newcastle's record fee of £185,000. A full-back with Tonbridge and Fulham, he was converted to striker at Luton. Newcastle's leading scorer, he is 22 and has gained three England Under-23 caps this year. Born London. 5 ft. 8 in., 11 st. 3 lb.

JOHN TUDOR: Tenacious forward signed for Newcastle in January 1971 in an exchange deal that took John Hope and David Ford to Sheffield Utd. Began his career with Coventry. Born Ilkeston. 5 ft. 10 in., 11 st. 10 lb.

ALEX REID: Midfield player secured last October from Dundee Utd. in an exchange which took Ian Mitchell back to Scotland. He has played regularly since. Born Glasgow. 5 ft. 9 in., 11 st.

Club address:
St. James' Park,
Newcastle-upon-
Tyne, 1



OFFICIALS

Chairman: RT. HON. LORD WESTWOOD, J.P.

Secretary: MR. MALCOLM HOOLE.

Manager: MR. JOE HARVEY.

Coach: MR. KEITH BURKINSHAW.

Captain: BOB MONCUR.

HONOURS

Football League Champions 1905, 1907, 1909, 1927.

Division II Champions 1965.

F.A. Cup Winners 1910, 1924, 1932, 1951, 1952, 1955.

European Fairs Cup Winners 1969.

TALK-BACK

Back in the team and back among the goals, today's subject in our series of Chelsea player interviews is

TOMMY BALDWIN



Family details:	My wife's name is Pauline and we have a lovely daughter, Lucy, aged eight months. We live at Wallington, Surrey.
This season's experiences:	I was going quite well, with 14 goals in 20 games—including a couple of hat-tricks—by the middle of November. Then I injured a hamstring at Crystal Palace. That took weeks to mend, and just as I was getting over it I did my Achilles tendon. I didn't get in the side again until I went on as substitute in the League Cup Final. I wasn't match-fit, but feel sharper after a run of Reserve games and it was great to be scoring First Division goals at Southampton on Tuesday.
Most memorable Chelsea games:	In six seasons since I came here from Arsenal I've won three medals in the F.A. Cup Finals of 1967 and 1970 and last year in the Cup-Winners' Cup. Those games all stand out. So does something else: We were the outsiders when we beat Leeds and Real Madrid to take those Cups, but hot favourites when Stoke beat us at Wembley in March. I hope we're outsiders again next time we're in a Final—there's not quite the same pressure on you to win.
Best pal at Stamford Bridge:	Charlie Cooke. We're regular room-mates when we go away for matches.
My Championship and F.A. Cup tips:	I can't see beyond Leeds. They're a helluva side. I reckon they're a fair bet to do the Double . . . unless we can stop them. What a game that'll be if we go there for the last game with them needing to win for the Championship and maybe the Double. Don't forget we upset their apple-cart in the F.A. Cup Final two years ago!
Most admired opponent:	Peter Simpson, of Arsenal. He was beginning to show in my time at Highbury and has become one of the best defenders in the business. In my view he's under-rated and still doesn't get the praise he deserves.
Best country visited:	Barbados, on Chelsea's summer tour two years ago. We'd just won the F.A. Cup and that made it all the merrier. I love a hot climate—for lying in the sun, not for playing football in. I'm looking forward to going back there in a few weeks.
Chelsea star of tomorrow:	Playing in the Combination side lately, I've been able to weigh up the young players we've got coming through. There are quite a few who can make top grade, but if I have to pick one I'll go for Gary Stanley. He's just 18—our former player Frank Upton sent him down from Derbyshire Schools football two years ago—and I was very impressed when he played up front with me in the Reserves at Ipswich two weeks ago. Gary got both our goals—he also plays well in midfield—and I shan't be at all surprised if he's really pushing next season.

MATCH SUMMARIES**FOOTBALL LEAGUE**

Saturday, 8th April.

Beat **CRYSTAL PALACE** (Home) 2-1. Half-time: 1-0.**Chelsea:** Bonetti; Mulligan, Boyle, Hollins, Dempsey, Harris, Garland, Webb, Osgood, Hudson, Cooke. Substitute (did not play) Baldwin.

Scorers: Hollins, Garland.

Crystal Palace (Yellow shirts): Jackson; Payne, Wall, Kellard, McCormick, Blyth, Craven, Goodwin, Wallace, Taylor, Tambling.

Scorer: Blyth.

Referee: Mr. E. D. Wallace (Swindon).

Attendance: 34,105.

Hollins, almost under the bar, scored seconds before half-time—his 18th goal of the season—after Dempsey headed against a post from Osgood's centre. Garland shot the second (74 mins.) following Cooke's cross, and with ten minutes left Blyth replied. Osgood was booked.

Wednesday, 12th April.

Beat **WOLVERHAMPTON WANDERERS** (Away) 2-0. Half-time: 1-0.**Wolves:** Parkes; Shaw, Parkin (Daley), Hegan, Munro, McAlle, McCalliog, Hibbitt, Richards, Eastoe, Wagstaffe.**Chelsea:** Bonetti; Mulligan, Boyle, Hollins, Dempsey, Harris, Garland, Webb, Osgood, Hudson, Cooke. Substitute (did not play): Kember.

Scorers: Garland, Osgood.

Referee: Mr. A. W. S. Jones (Ormskirk).

Attendance: 24,566.

Garland, intercepting Munro's back pass, scored after 50 seconds—the start of a bright display leading to our fifth successive League win and the season's double against Wolves. Osgood headed Richards' header off the line and himself shot the second goal (55 minutes) when later unmarked to receive Hudson's free-kick. Hudson was later booked.

Saturday, 15th April.

Lost to **TOTTENHAM HOTSPUR** (Away) 0-3. Half-time: 0-3.**Tottenham:** Jennings; Kinnear, Knowles (Pearce), Mullery, England, Collins, Gilzean, Perryman, Chivers, Peters, Coates.

Scorers: Chivers 2, Coates.

Chelsea: Bonetti; Mulligan, Boyle, Hollins, Dempsey, Harris, Garland, Webb, Osgood (Kember), Hudson, Cooke.

Referee: Mr. R. B. Lee (Cheadle).

Attendance: 45,799.

Chivers hooked Spurs ahead (2 minutes) when Gilzean headed on England's long free-kick. After Jennings made fine saves from Osgood's shot and header, Coates scored the second (17 minutes) with a power-drive which Bonetti parried but could not keep out. Chivers shot the third (22 minutes), and a minute later Osgood suffered strained ligaments of the left knee and was taken off on a stretcher.

FOOTBALL COMBINATION

Saturday, 8th April.

Drew with **QUEEN'S PARK RANGERS** (Away) 1-1.

Team: Sherwood; Locke, Lawrence, Droy, Perkins, Britton, Potrac, Hinton, Feely, Stanley, Finnieston (Morrison).

Scorer: Lawrence.

Tuesday, 11th April.

Drew with **IPSWICH TOWN** (Away) 2-2.

Team: Phillips; G. Wilkins, Perkins, Droy, Lawrence, Britton, Potrac, Hinton, Baldwin, Stanley, Houseman (Spong).

Scorer: Stanley 2.

Saturday, 15th April.

Drew with **TOTTENHAM HOTSPUR** (Home) 2-2.

Team: Phillips; Locke, Lawrence, Droy, McCreadie, Potrac, Brolly, Hinton, Baldwin, D. Gradi, Davis.

Scorer: Potrac 2.

SOUTHERN JUNIOR FLOODLIT CUP SEMI-FINAL

Thursday, 13th April.

Beat **ASTON VILLA** (Home 1-0).

Team: Sherwood; Locke, G. Wilkins, Perkins, Lawrence, Spong, B. Bason, Brolly, Stanley, S. Pople, Britton.

Scorer: Stanley.

S.E. COUNTIES LEAGUE—DIV. I

Saturday, 8th April.

Lost to **TOTTENHAM HOTSPUR** (Home—Mitcham) 0-2.

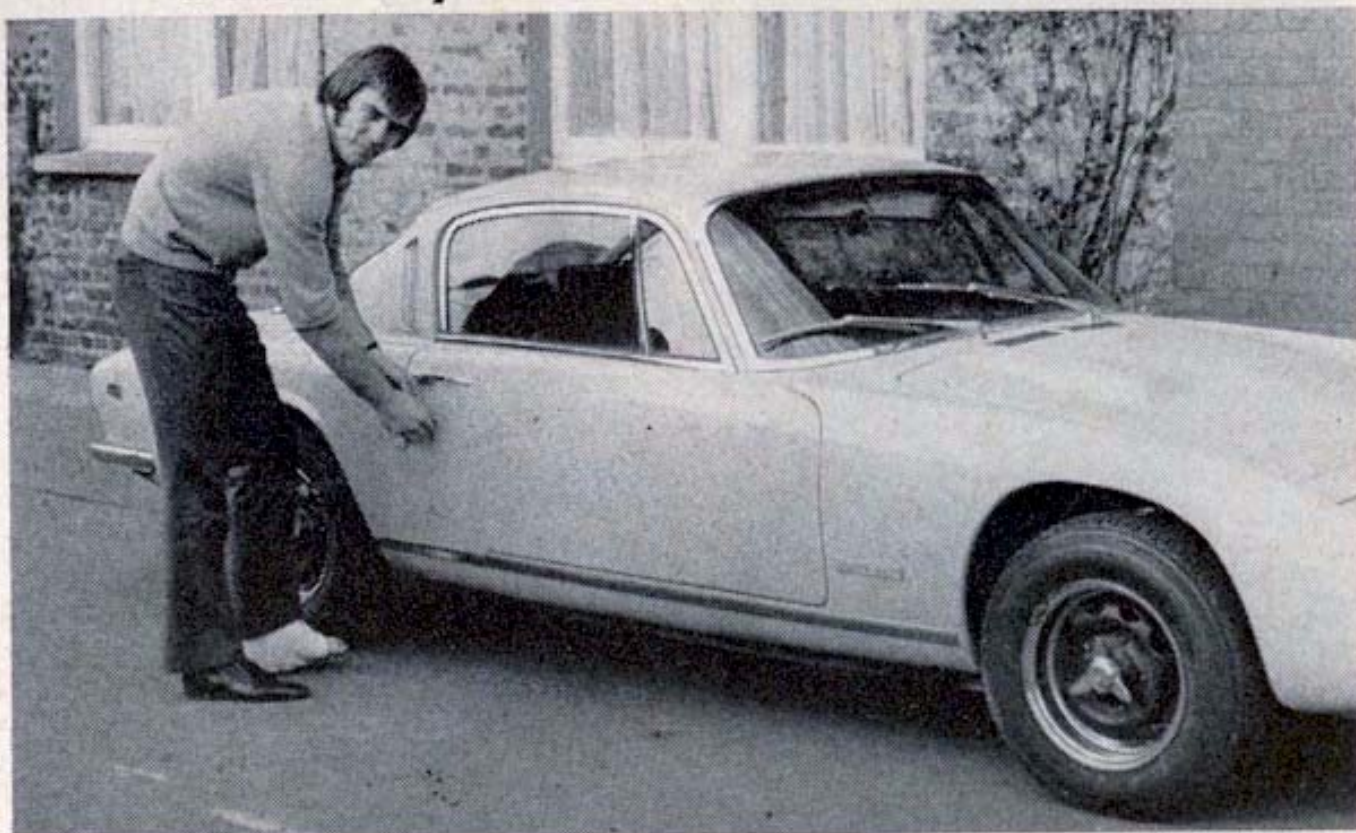
Team: D. Ebanks; G. Wilkins, P. Sees, Price, C. Harris, Spong, B. Bason, T. Warren, B. Bolton, S. Pople, J. Davis (R. Steer).

Two Cup Finals: On Thursday of last week our Juniors avenged their recent F.A. Youth Cup defeat against Aston Villa by beating Villa here in the semi-final of the Southern Junior Floodlit Cup. Gary Stanley scored the only goal, and we meet Coventry City in the Final—first leg here on Monday, May 1 (7.30 p.m.) and the return game at Coventry on Friday, May 5. Chelsea Juniors are in another Final—the London Youth Cup—away to Crystal Palace (single leg) this coming Monday.

* * *

New signing: Teddy Maybank, 15-year-old inside-forward from Brixton, who left school at Easter, has been signed as an apprentice. He joined us originally on Associated Schoolboy forms.

Hutch says 'Roll on Season 1972-73'



You can go places fast in a car like this, even with one foot in plaster, but one thing Ian Hutchinson can't get to soon enough in his new yellow Lotus Elan is the start of next season. "It can't come quickly enough," says Ian, desperate to get back in action after missing the later stages of last season

because of a cartilage operation and all this season with a broken leg. But his plaster came off this week, and after a further three-months' rest Hutch will report back in July two weeks before the rest of our players. Then, by the time they make a start, he should be ready to join them in full training.

NEXT HOME MATCHES

Monday, 24th April (7.30 p.m.)

STOKE CITY

Football League

©

Saturday, 29th April (3 p.m.)

READING

Football Combination

Golden Goals

There are just two more opportunities to win £50 in our Golden Goals competition—on today's match and on Monday night, when Stoke City are here in the final home League fixture of the season.

And at each game there's more than one £50 prize waiting to be won. At the last match here against Crystal Palace, we paid that amount to each of THREE winners.

Buy your tickets on the way in . . . and YOU could be one of the fans who goes home fifty pounds better off!

TODAY'S HALF-TIMES

FIRST DIVISION

A	Arsenal v. West Ham
B	Huddersfield v. Wolves
C	Leicester v. Coventry
D	Liverpool v. Ipswich
E	Man. City v. Derby
F	Nott'm. F. v. Man. Utd.
G	Sheff. Utd. v. Crystal P.
H	Southampton v. Tottenham
J	Stoke v. Everton
K	W.B.A. v. Leeds

SECOND DIVISION

L	Birmingham v. Middlesbro'
M	Burnley v. Millwall
N	Carlisle v. Fulham
O	Charlton v. Portsmouth
P	Norwich v. Swindon
R	Orient v. Watford
S	Oxford v. Cardiff
T	Sunderland v. Q.P.R.

THIRD DIVISION

U	Bradford C. v. Aston Villa
V	Brighton v. Bolton

FOURTH DIVISION

W	Brentford v. Exeter
---	---------------------	-------