

LEAGUE  
CHAMPIONS  
1954-55

# Chelsea Football Club

Stamford Bridge Grounds, London SW6



F.A. CUP—FOURTH ROUND

SEASON 1963-64

**CHELSEA**

v

**HUDDERSFIELD TOWN**

Saturday, 25th January, 1964

Kick-off 3 p.m.

Official Programme

6<sup>D</sup>

The right of admission to grounds  
is reserved.

# THE CHELSEA FOOTBALL & ATHLETIC CO. LTD.



League  
Champions 1955

FOUNDED 1905

CLUB COLOURS:

Shirts: Royal Blue (White Facings). Shorts: White.  
Stockings: Blue, Blue and White Tops.

Registered Address:

STAMFORD BRIDGE GROUNDS, FULHAM ROAD, LONDON, S.W.8.  
(FUL 5545)

PRESIDENT: The Right Hon. Earl Cadogan, M.C.

BOARD OF DIRECTORS:

J. H. Mears, (Chairman), C. J. Pratt (Vice-Chairman)  
L. J. Mears, L. R. Withey, J. B. Mears.

SECRETARY: J. Battersby

TEAM MANAGER: T. Docherty

TRAINER: H. Medhurst



F.A. Youth Cup  
1960 and 1961

## The Talk of Stamford Bridge

PLAYING at home on Cup Day is something that comes a little strange to us. Indeed, this is the first time in the last six Cup draws in which we have participated that we have come out first in the pairings. The last occasion was in the third round (of unhappy memory) against Crewe in 1961. The following year we were drawn away in the same round to Liverpool (and went out); last year we had away ties with Tranmere, Charlton, and Manchester United; and in this year's third round we were drawn away to Spurs. We have, of

course, staged home ties during this period—against Tranmere last season and Spurs two weeks ago—but these were replays, something different from being drawn at home.

\* \* \*

This is our first F.A. Cup meeting with Huddersfield Town. When there is a similarity of colours, both clubs are normally required to change in the Cup, but Huddersfield have sportingly suggested that we keep to our usual blue while they wear their second strip of white shirts and black shorts. We shall reciprocate the arrangement if the match is drawn and there is a replay at Huddersfield next Wednesday (7.15 p.m.). Tickets for seats at a replay will be priced 7/6, 10/- and 12/- and will be on sale to personal applicants at the Club offices on Monday until 5 p.m. Applications received through the post on Monday will also be dealt with — and any unsold tickets will be returned to Huddersfield on Monday evening. No tickets will be required for admission to the ground.

### OUR FRONT COVER

Ken Shellito presents the first £100 prize in the new Chelsea Development lucky numbers competition. Receiving it at half-time last Saturday on behalf of the winning ticket-holder, Mr. F. Canard, of Battersea, is seller R. Freeman, from Putney Vale. It could be YOUR turn TODAY—see back page.

We appeal to spectators to assist the police and stewards by packing towards the front of the terracing on big-match days. Some congestion was caused at the Cup replay against Spurs by early arrivals who picked a spot at the back and refused to move forward. This led to pressure being built up unnecessarily at the top of the terraces while, nearer the front, spectators had 'yards' of room.

\* \* \*

After last Saturday's win against Aston Villa, the boys had a special celebration at Terry Venables' home. It was a party to mark his 21st birthday (the previous week when we were at Liverpool), and our players presented him with a film projector.

\* \* \*

For your musical entertainment today we are pleased to welcome once again to Stamford Bridge the South London Girl Pipers.

\* \* \*

Since the news appeared that we are now holding training and coaching classes on Tuesday and Thursday nights for schoolboys of 13, 14 and 15, we have been inundated with applications. We would point out that we can take only *selected* schoolboys for training of this sort, and then no more than about two dozen.

\* \* \*

We are pushing on well towards the £10,000 target for Frank Blunstone's Testimonial, and hope that a "guess the gate" competition when we play Fulham here on March 7 will see it reached. See page 15 for entry form.

\* \* \*

Accommodation is sought for our young players, and if you are able to provide lodgings please write to the Secretary.

\* \* \*

Found in "F" Stand after last Saturday's match: a Ronson lighter inscribed "Gerry". Would the owner apply at the office please.

#### F.A. CUP APPEARANCES

BLUNSTONE .....2	MORTIMORE .....2
BRIDGES .....2	MURRAY .....2
DUNN .....2	UPTON .....2
HARRIS, R. ....2	VENABLES .....2
HINTON .....2	BROWN .....1
McCREADIE .....2	TAMBLING .....1
<i>Goalscorers: Murray 2, Tambling 1. Total, 3.</i>	

## MATCH SUMMARIES

### FOOTBALL LEAGUE

Saturday, 18th January.

Beat ASTON VILLA (Home) 1-0. Half-time: 1-0.  
Chelsea—Dunn; Hinton, Harris (A.); Harris (R.)  
Mortimore, Upton; Murray, Tambling, Bridges,  
Venables, Blunstone.

Scorer: Bridges.

Aston Villa—Sims; Wright, Aitken; Pountney,  
Sleeuwenhoek, Deakin; Fraser, Woosnam, Hate-  
ley, Tindall, Burrows.

Referee: Mr. L. Callaghan (Merthyr Tydfil).

Attendance: 23,968.

### F.A. YOUTH CUP (Third Round)

Monday, 20th January.

Lost to ARSENAL (Away) 1-3.

Team: R. Willis; S. Henderson, J. Boyle; Bruce,  
J. Callaghan, A. Beaumont; A. Wilks, J. Stewart,  
E. Whittington, McCalliog, Houseman.

Scorer: McCalliog.

### SOUTH-EAST COUNTIES LEAGUE

Saturday, 18th January.

Beat CRYSTAL PALACE (Away) 6-4.

Team: A. Day; P. Mallard, P. Jenkins; Bruce,  
J. Callaghan, A. Beaumont; M. Vowles, J. Scott,  
E. Whittington, Breen, A. Wilks.

Scorers: Whittington 4, Bruce, Wilks.

### OTHER MATCH

Monday, 20th January.

Drew with GREAT BRITAIN OLYMPIC XI (Home) 1-1.

Team (with substitutes): Cowen; Harris, A. (D.  
Sexton), McCreddie (Harris, A.); T. Docherty,  
Young, Sorrell; Brown (Fascione), Howarth  
(Brown), K. Duffel (Mulholland), Harmer  
(Burton), Knox (Somers).

Scorer: Mulholland.

Commentaries on all first team  
matches are relayed to local hospitals  
by members of Chelsea TOC H.

## NEXT HOME MATCHES

★

Monday, January 27 (Kick-off 7 p.m.)

### CHARLTON

SOUTHERN JUNIOR FLOODLIGHT CUP  
(Second Round)

★

Saturday, February 1 (Kick-off 2.45 p.m.)

### SWINDON TOWN

FOOTBALL COMBINATION

★

Saturday, February 8 (Kick-off 3 p.m.)

### WOLVES

FOOTBALL LEAGUE



Bobby Tambling (arrowed) scores from Bert Murray's centre . . .



. . . and we're on our way to victory in the Third Round replay against Spurs. Tambling and Terry Venables celebrate, and in the background Frank Blunstone does a jig.

# KNOCKED OUT SPURS IN ROUND 3



Murray, with a perfect header from Tambling's cross, clinches it . . .



. . . and is mobbed by jubilant team-mates. It's the first time we've ever put Spurs out of the Cup and Eddie McCreddie tops the "pile" of delighted Chelsea players.

## OUR VISITORS TODAY

**A**LTHOUGH we have never previously met them in the F.A. Cup, Huddersfield Town are no strangers to Stamford Bridge. Their most recent visit was on March 2 last year, when a 2-1 win enabled them to complete a League "double" at our expense. They were, in fact, the only side to beat us twice last winter.

The present playing staff includes three Internationals. They are goalkeeper Ray Wood, left-back Ray Wilson, and outside-left Mike O'Grady, all of whom have played for England, though Wood gained his honours while with Manchester United. Wilson and O'Grady have recently been absent through injury.

Right-back Denis Atkins, a native of Bradford, has been a professional with Huddersfield since 1956.

### TODAY'S REFEREE

**M**R. LEO CALLAGHAN, 39-year-old International referee from Merthyr Tydfil, is the "man in charge" here today for the third time this season (previous visits Manchester United in October and Aston Villa last week).

He is in his eleventh season on the Football League and F.A. lists. His occupation: social worker.

In the absence of Wilson, Ray Holt, normally the club's reserve centre-half, has been deputising at left-back. Born at Thorne, near Doncaster, he seems to have settled down well in his new position.

John Bettany and utility man Les Massie have each played at right-half in recent weeks.

Massie, a Scot from Aberdeen, has proved his versatility by playing in every forward and wing-half position. He is one of the club's longest-serving players, signing professional in 1952, and has made more than 250 League appearances.

Centre-half John Coddington, a professional at Leeds Road for nine years, played at full-back before being switched to his present role. Completing the middle line is Peter Dinsdale, the club's only

ever-present last winter, and again an outstanding member of the team. He signed as a professional in January 1956.

Outside-right Kevin McHale was two months' short of his 17th birthday when making his debut in August 1956. He has subsequently been a regular first-team player, and scored the goal against Plymouth in the third round.

Len White is now in his second full season at Leeds Road, having been signed from Newcastle in February 1962.

Centre-forward Derek Stokes, an England Under-23 cap, was signed from Bradford City in the summer of 1960. He began his career at outside-left and, with Kevin Lewis under suspension, is in that position today.

Leading the forwards, in his first F.A. Cup-tie, is 19-year-old ex-Junior Alan Gilliver, from Sheffield.

Chris Balderstone, a local product, has played exclusively at inside-left this winter, after alternating between the front line and both wing-half positions in recent seasons. He has been a professional since 1958.

Cup flashback: Two of Town's five F.A. Cup finals were at Stamford Bridge—they lost 1-0 to Aston Villa in 1920 and beat Preston 1-0 here two years later.

### FOOTBALL LEAGUE—DIVISION II

	HOME			Goals AWAY			Goals	L	F	A	Pts.	
	P	W	D	L	F	A						
Leeds	27	7	6	0	21	9	8	4	2	24	12	40
Sunderland	28	10	1	2	29	12	7	5	3	23	17	40
P.N.E.	27	7	6	0	24	11	8	2	4	30	26	38
Charlton	26	8	2	3	31	18	6	3	4	22	28	33
Swindon	27	8	5	1	28	11	3	4	6	13	21	31
Newcastle	27	9	2	3	34	18	4	1	8	15	27	29
South'pton	25	8	1	3	38	18	3	5	5	16	22	28
Man. C.	26	7	2	4	34	18	4	4	5	20	23	28
Portsmouth	27	5	6	3	30	22	5	2	6	22	21	28
Middlesbro.	26	10	2	2	35	8	1	3	8	14	24	27
Norwich	27	7	3	4	31	22	2	5	6	19	28	26
Rotherham	26	8	2	3	26	17	2	3	8	24	34	25
North'pton	27	6	0	7	23	22	4	5	5	16	19	25
Swansea	27	8	1	4	28	16	1	5	8	13	31	24
Derby Co.	26	5	3	5	18	19	3	5	5	11	19	24
Leyton O.	26	5	4	3	16	13	3	4	7	13	25	24
Cardiff	25	6	5	2	18	15	2	1	9	16	37	22
H'FIELD	26	7	3	3	21	13	1	2	10	12	28	21
Grimsby	27	4	4	5	19	21	1	5	8	10	32	19
Bury	25	3	4	5	21	19	3	1	9	14	31	17
Scunthorpe	24	4	6	4	18	17	1	0	9	6	26	16
Plymouth	28	2	5	7	15	26	1	4	9	12	27	15

# F.A. CUP SPECIAL

This chart, based on today's Fourth Round pairings, shows the round reached by each club in every post-war season. (Sf = Semi-finalists; F = Finalists; W = Winners.)

## PROGRESS YEAR BY YEAR

	1945-46	1946-47	1947-48	1948-49	1949-50	1950-51	1951-52	1952-53	1953-54	1954-55	1955-56	1956-57	1957-58	1958-59	1959-60	1960-61	1961-62	1962-63
CHELSEA ... ..	5	4	4	5	Sf	5	Sf	5	3	5	5	4	4	4	4	3	3	5
HUDDERSFIELD ... ..	3	3	3	4	3	5	3	4	3	6	3	5	3	3	4	4	4	3
ALDERSHOT ... ..	4	2	2	3	1	3	2	1	2	2	3	1	3	1	1	4	2	2
SWINDON ... ..	1	2	5	3	2	2	5	3	2	1	4	2	1	2	1	2	1	4
BARNSELY ... ..	5	4	3	3	3	3	4	4	2	2	4	5	3	3	1	6	2	3
BURY ... ..	4	3	3	3	4	3	3	4	3	3	3	3	2	3	3	1	3	4
BEDFORD ... ..	-	-	-	-	-	-	1	-	1	1	3	2	-	-	1	-	-	2
CARLISLE ... ..	2	3	1	1	3	3	1	1	1	2	1	3	2	2	1	2	3	3
BLACKBURN ... ..	3	5	4	3	3	3	Sf	3	4	3	5	3	Sf	4	F	5	6	3
FULHAM ... ..	3	3	6	3	3	6	3	3	4	3	4	4	Sf	4	4	3	Sf	3
BOLTON ... ..	Sf	4	3	3	4	4	3	F	6	4	4	3	W	6	4	4	3	3
PRESTON ... ..	5	6	6	4	3	4	3	4	F	4	3	5	3	5	6	4	6	3
BURNLEY ... ..	3	F	3	5	5	3	6	5	4	3	4	6	4	6	6	Sf	F	4
NEWPORT ... ..	3	3	2	5	3	4	3	3	1	1	1	4	1	4	3	1	2	1
IPSWICH ... ..	2	2	1	1	3	2	3	3	5	3	1	3	4	5	3	3	4	4
STOKE ... ..	6	5	4	5	3	5	4	4	4	4	5	3	5	4	3	5	4	3
LEEDS ... ..	3	3	3	3	6	4	5	3	3	3	3	3	3	3	3	3	3	5
EVERTON ... ..	3	4	5	4	Sf	3	3	Sf	5	4	6	5	4	5	3	3	5	5
LEYTON ORIENT ... ..	1	1	1	2	1	1	5	1	6	2	4	3	4	3	3	5	4	5
WEST HAM ... ..	4	3	3	3	4	4	4	3	4	3	6	4	5	3	3	3	3	6
LIVERPOOL ... ..	4	Sf	4	5	F	3	5	3	3	5	5	3	6	3	4	4	5	Sf
PORT VALE ... ..	3	4	1	1	4	3	1	2	Sf	4	4	3	2	1	5	3	5	4
MANCHESTER UNITED ... ..	4	4	W	Sf	6	6	3	5	3	4	3	F	F	3	5	4	Sf	W
BRISTOL ROVERS ... ..	2	1	4	1	1	6	4	3	3	4	4	4	6	3	4	3	3	1
OXFORD UNITED ... ..	-	-	-	-	-	-	-	-	4	1	-	-	-	2	1	3	1	3
BRENTFORD ... ..	6	4	4	6	3	3	4	4	3	4	2	2	1	4	2	1	3	1
SHEFFIELD UNITED ... ..	4	6	3	4	4	4	6	4	3	3	5	3	5	6	6	Sf	6	5
SWANSEA ... ..	3	4	3	2	4	3	5	3	4	5	3	3	3	3	4	5	3	4
SUNDERLAND ... ..	5	3	3	4	4	6	3	4	3	Sf	Sf	4	3	3	3	6	4	5
BRISTOL CITY ... ..	4	2	2	3	1	5	2	1	3	1	3	5	5	4	3	4	3	3
W.B.A. ... ..	4	4	4	6	3	3	5	4	W	4	5	Sf	6	5	5	3	5	4
ARSENAL ... ..	3	3	3	4	W	5	F	6	4	4	6	6	3	5	3	3	4	5

# HUDDERSFIELD TOWN 1963-64



*(By courtesy of the "Huddersfield Examiner.")*

*Standing: J. Coddington, J. Bettany, L. Massie, R. Wood, P. Dinsdale, D. Atkins, R. Wilson.*

*Seated: K. McHale, L. White, D. Stokes, C. Balderstone, M. O'Grady.*

*Insets: K. Lewis, R. Holt.*



# CHELSEA

Colours—Shirts: Royal Blue (White Facings) Shorts: White.  
Stockings: Blue; Blue and White Tops.

(Goal)				
<b>DUNN</b>				
1				
(Right-back)		(Left-back)		
<b>HINTON</b>		<b>McCREADIE</b>		
2		3		
(Right-half)		(Centre-half)	(Left-half)	
<b>HARRIS (R.)</b>		<b>MORTIMORE</b>	<b>UPTON</b>	
4		5	6	
(Outside-right)	(Inside-right)	(Centre-forward)	(Inside-left)	(Outside-left)
<b>MURRAY</b>	<b>TAMBLING</b>	<b>BRIDGES</b>	<b>VENABLES</b>	<b>BLUNSTONE</b>
7	8	9	10	11

*Referee:*  
**Mr. L. CALLAGHAN**  
(Merthyr Tydfil)



*Linesmen:*  
**Mr. P. R. PARSONS**  
(Cheltenham)  
(Red Flag)  
**MR. G. F. SQUIRRELL**  
(Woodbridge)  
(Yellow Flag)

11	10		9	8	7
<b>STOKES</b>	<b>BALDERSTONE</b>		<b>GILLIVER</b>	<b>WHITE</b>	<b>McHALE</b>
(Outside-left)	(Inside-left)		(Centre-forward)	(Inside-right)	(Outside-right)
6	5			4	
<b>DINSDALE</b>	<b>CODDINGTON</b>			<b>MASSIE</b>	
(Left-half)	(Centre-half)			(Right-half)	
3	2				1
<b>HOLT</b>	<b>ATKINS</b>				<b>WOOD</b>
(Left-back)	(Right-back)				(Goal)

# HUDDERSFIELD TOWN

Colours—Shirts: Blue and White Stripes. Shorts: White.  
Stockings: White, Blue Hooped Tops.

(Playing today in White Shirts and Black Shorts)



## PICTURE OF THE YEAR

**F**OR a split second, time stands still. A camera clicks . . . and the result is a picture that portrays the joys and sorrows of the Cup.

Bert Murray has headed our equaliser at White Hart Lane in the first meeting with Spurs, and jumps for joy.

But it's a moment of anguish for Spurs' keeper Hollowbread. You can almost hear him cry, "Oh, no!" as the ball hums into the net.

To us, it's the "picture of the year." For the time being, anyway . . .

**F.A. CUP SPECIAL**

# Tables, Appearances & Goalscorers

(Up to and including Saturday, January 18)

## FOOTBALL LEAGUE—DIVISION I

	HOME			Goals			AWAY			Goals			Pts
	P	W	D	L	F	A	W	D	L	F	A		
Tottenham	26	9	2	1	35	14	7	3	4	36	32	37	
Blackburn	28	7	4	3	31	16	7	3	4	32	23	35	
Liverpool	25	9	0	5	33	15	7	2	2	15	10	34	
Sheff. W.	27	11	1	1	34	9	3	4	7	21	29	33	
Arsenal	28	9	4	2	48	26	4	3	6	24	30	33	
Man. U.	27	9	1	3	34	13	5	3	6	23	29	32	
CHELSEA	27	7	3	4	23	18	4	6	3	22	19	31	
Everton	27	8	2	3	28	17	4	5	5	18	27	31	
Leicester	27	7	2	5	23	15	4	6	3	18	18	30	
W.B.A.	27	5	5	4	28	24	6	2	5	17	13	29	
Sheff. U.	27	6	4	4	25	16	5	3	5	20	25	29	
Burnley	28	9	2	3	29	14	2	5	7	17	29	29	
Nottm. F.	27	5	5	4	22	17	5	3	5	18	23	28	
Fulham	27	8	3	2	32	14	1	4	9	8	27	25	
West Ham	27	4	6	4	25	28	4	3	6	16	22	25	
Wolves	27	4	5	4	22	25	4	4	6	18	31	25	
Aston Villa	27	6	2	5	23	15	3	3	8	16	25	23	
B'ham. C.	26	5	5	3	17	17	3	0	10	14	35	21	
Stoke	26	2	5	5	22	25	4	2	8	22	33	19	
Blackpool	27	4	4	6	14	23	2	1	10	13	30	17	
Bolton	27	2	4	7	19	20	2	2	10	13	32	14	
Ipswich	27	3	2	8	19	31	0	4	10	11	44	12	

## FOOTBALL COMBINATION—DIVISION II

	P	W	D	L	F	A	Pts
CHELSEA ...	18	11	4	3	42	12	26
Birmingham C.	18	10	5	3	46	24	25
Portsmouth...	18	11	3	4	46	27	25
Swindon Town	17	11	2	4	52	31	24
Charlton ...	18	9	5	4	33	25	23
Leyton Orient	20	9	4	7	39	43	22
Coventry City	20	8	5	7	35	32	21
Fulham ...	19	8	5	6	37	34	21
Southampton	21	9	2	10	42	42	20
Bournemouth	19	7	5	7	30	27	19
Reading ...	19	7	5	7	48	47	19
Watford ...	19	6	5	8	36	39	17
Millwall ...	19	6	5	8	23	27	17
Brentford ...	20	6	5	9	31	43	17
Brighton & H.A.	18	6	3	9	31	52	15
Queen's Park R.	19	5	1	13	24	44	11
Aldershot ...	19	2	6	11	21	42	10
Southend United	19	2	4	13	33	58	8

## SOUTH-EAST COUNTIES LEAGUE

	P	W	D	L	F	A	Pts
CHELSEA ...	19	14	3	2	87	21	31
Fulham ...	19	13	3	3	65	30	29
Queen's Park R.	15	11	4	0	53	15	26
Leyton Orient	19	11	3	5	51	28	25
Tottenham ...	18	10	3	5	59	29	23
Arsenal ...	16	8	4	4	33	18	20
Charlton ...	17	8	3	6	40	34	19
West Ham ...	18	7	3	8	35	33	17
Portsmouth...	20	7	2	11	45	58	16
Crystal Palace	18	6	4	8	39	56	16
Luton Town	17	5	5	7	48	52	15
Watford ...	17	6	3	8	33	47	15
Brentford ...	18	7	0	11	31	69	14
Millwall ...	18	4	1	13	34	93	9
Bexley United	17	3	1	13	28	54	7
Brighton ...	20	1	2	17	20	64	4

## FOOTBALL LEAGUE APPEARANCES

BLUNSTONE.....	27	SHELLITO .....	11
VENABLES.....	27	UPTON.....	11
HARRIS, R.....	26	BROWN.....	7
MORTIMORE .....	26	HARRIS, A.....	5
McCREADIE .....	25	MULHOLLAND .....	5
BONETTI.....	24	HOUSEMAN .....	3
MURRAY .....	23	DUNN.....	2
TAMBLING .....	21	SORRELL .....	2
BRIDGES .....	20	WATSON .....	2
MOORE .....	15	HARMER .....	1
HINTON .....	13	McNALLY.....	1

Goalscorers: Bridges 11, Venables 7, Blunstone 6, Murray 6, Tambling 6, Moore 3, Brown 1, Hinton 1, Houseman 1, Mortimore 1, Mulholland 1, Watson 1. Total 45.

## FOOTBALL COMBINATION APPEARANCES

HOLLINS .....	17	McCALLIOG .....	7
HARRIS, A.....	15	UPTON .....	7
YOUNG .....	15	BURTON .....	6
FASCIONE .....	11	MULHOLLAND .....	6
SORRELL .....	11	COWEN .....	5
WATSON.....	11	O'ROURKE .....	5
DUNN .....	9	HINTON .....	4
S. HENDERSON .....	9	McNALLY.....	3
HOUSEMAN .....	9	BRIDGES .....	2
KNOX .....	9	MURRAY .....	2
BROWN .....	8	MOORE .....	1
HARMER .....	8	A. WILKS .....	1
HOWARTH .....	8	R. WILLIS .....	1
SOMERS .....	8		

Goalscorers: Fascione 7, Howarth 7, Brown 5, Houseman 5, Murray 4, O'Rourke 4, Burton 2, Harris (A.) 1, Hollins 1, Knox 1, McCalliog 1, Mulholland 1, Somers 1, Watson 1, Opponent 1. Total 42.

## SOUTH-EAST COUNTIES LEAGUE APPEARANCES

A. BEAUMONT.....	19	J. ACTESON.....	5
J. SCOTT .....	17	HOUSEMAN .....	5
A. WILKS .....	17	J. BOYLE .....	4
R. WILLIS .....	14	B. FOSCOLO .....	4
BRUCE.....	12	HOLLINS .....	4
P. JENKINS .....	12	H. HAGGIS .....	3
J. CALLAGHAN .....	11	G. SHEPHERD .....	3
S. HENDERSON .....	10	BREEN .....	2
P. MALLARD .....	10	C. CLARKE .....	2
M. VOWLES .....	10	A. DAY .....	2
J. STEWART .....	9	B. ADAMS .....	1
E. WHITTINGTON.....	9	K. BREWER .....	1
A. THOMSON .....	8	B. JAMES .....	1
McCALLIOG .....	6	T. LEAVER .....	1
R. WOSAHLO .....	6	J. RYAN .....	1

Goalscorers: Scott 11, Whittington 11, Wilks 10, Bruce 9, Houseman 9, Thomson 9, Stewart 8, McCalliog 5, Clarke 3, Vowles 3, Wosahlo 3, Beaumont 2, Boyle 1, Hollins 1, Opponents 2, Total 87.

# QUESTION & ANSWER

A new-style series of interviews with the personalities of Chelsea F.C. Today's questions put by Albert Sewell to

## HARRY MEDHURST

**WHENEVER** it comes to Chelsea and the Cup, I see Freddie Cox scoring that freak corner-kick goal against you in the 1950 Semi-Final at Tottenham — the goal that sent Arsenal to Wembley instead of Chelsea. Does it still haunt you?

It always will. We were leading 2-0 (Roy Bentley scored both) when Arsenal got that corner. It was the last kick of the first half. Cox drove the ball hard across, it went over our left-back Bill Hughes and swerved violently inside the near post as I rushed from the far one. Arsenal forced a replay and won it, but it was Cox's corner that really knocked us out.

**Was that the nearest you have been to appearing in a Wembley Final?**

No, I was 'keeper for West Ham when they reached the 1940 War Cup Final against Blackburn. I had played in every round, but couldn't get Army leave for the Final. They gave me a medal, but it wasn't the same as playing.

**Before we turn to the trainer stage of your career, can you briefly sketch in the details of your playing days?**

I was born at Byfleet, decided when I was about five that I wanted to be a footballer, joined Woking as an outside-left, was converted into a goalkeeper at 17 and signed pro for West Ham in season 1934-35. In 1946 I joined Chelsea (Joe Payne went to West Ham in an exchange deal) and was a player here till November, 1952, when I joined Brighton. I came back the following summer as assistant-trainer to Jack Oxberry, and became head trainer in 1960.

**Did you find your height, 5 ft. 8 in., any disadvantage as a goalkeeper?**

I would have liked to be a couple of inches taller with the sort of reach Frank Swift had. But there have been good keepers, before and since, shorter than I was. I knew I had to make up for lack of inches with extra agility and quicker reflexes.

**When did you first see yourself as a trainer?**

I was in the St. John Ambulance Brigade nearly 20 years ago, and held certificates for first aid. My interest was probably increased through my sister being a nurse (she is now a matron) and as a player I saw a lot of injuries — mostly other people's, though I suffered five finger-joint fractures and a broken wrist myself. When a vacancy occurred here, I gave up playing to take it. I studied hard on the medical side, and was among the first to gain the F.A. trainers' certificate. I've been on their summer course every year since 1959. You're always learning in this game, whether you're a player, manager, coach or trainer. If the day comes when you think you know it all, you might as well pack up.

**What training honours have you earned?**

England Youth, Amateur and Under-23's. I went on the 1962 FIFA course at Macolin, Switzerland, being selected to attend along with Walter Winterbottom, Billy Wright and Les Shannon.

**How does the Chelsea set-up of 1964 compare with the days when you were a player here?**

There is not a better-run club in the country than Chelsea today. And, thanks to Tommy Docherty, we now have the one great thing the club had always lacked on

the field: method. Chelsea always had "names"; with the present combination of "names" and method, we must have the best chance we've ever had of winning honours.

**There have been instances this season of players being fined for absence from training or lateness for treatment. How rigid is discipline here?**

It's firm but fair. Players are very well paid and looked after nowadays. In return Tommy Docherty demands 100 per cent. effort all the time (which is what he gives himself) from everyone on the staff. There are no favourites. First-team regulars have to toe the line the same as the newest apprentice.

**What is a normal day for you?**

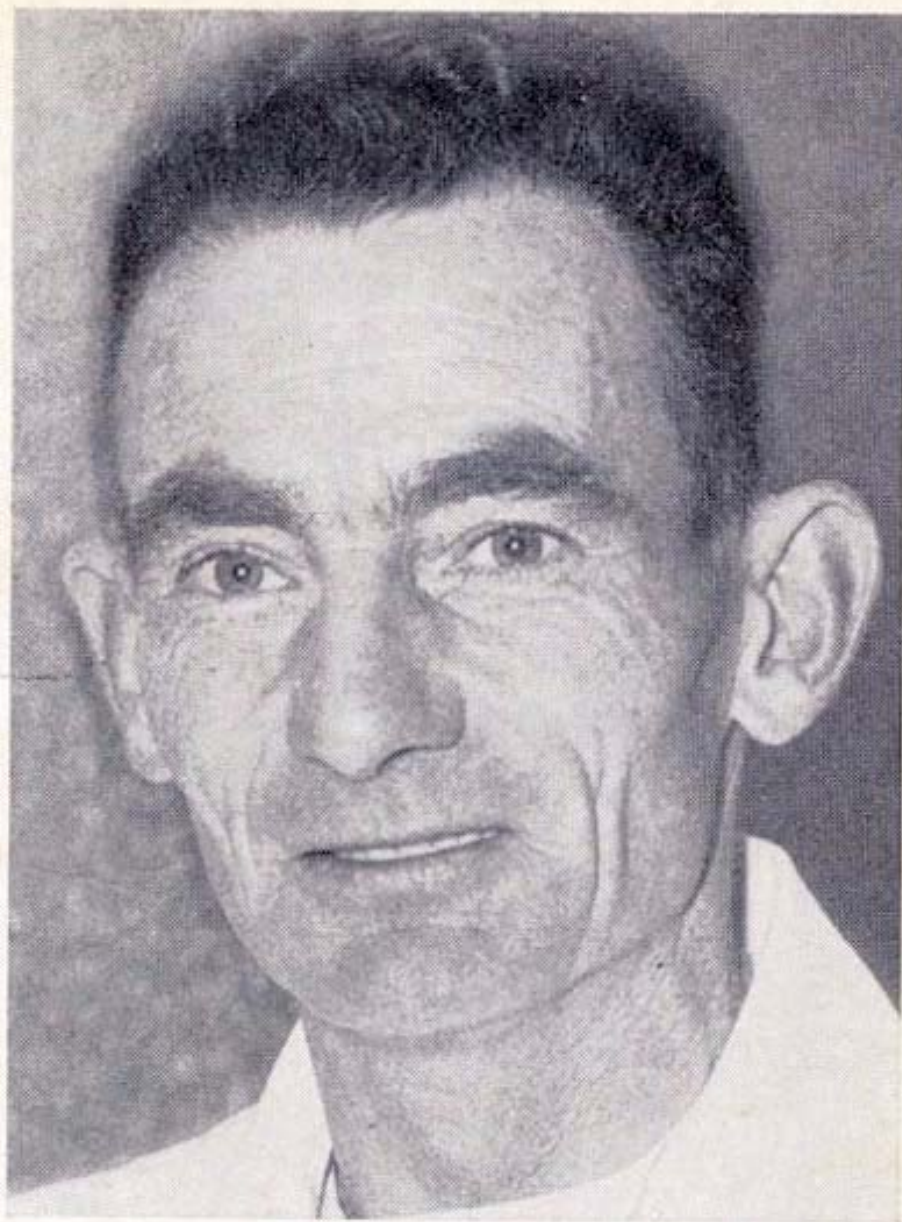
Up at 5.30 a.m., catch the 7.15 at Woking, arrive here by 8.30. Prepare for first treatments at 9.30. This can last till lunch-time, with another batch afterwards.

Medical books have to be kept up to date, also index cards for every player showing injuries, treatment, progress, etc. There's playing kit, training gear, medical supplies and equipment to be checked and ordered. I rarely leave before 5.30 p.m., with late nights on Tuesday and Thursday now that we have started coaching and training for selected schoolboys of 13, 14 and 15.

**At what value do you put your equipment in the medical room?**

Over £1,000. With short wave, ultra-sonic and Faradism (for muscle rehabilitation) we are equipped as well as any club and far better than most.

**The old picture of the trainer who organised the actual training of players is out of date now. With white**



**coat instead of track-suit, you are really a medical man?**

Yes, physiotherapist is more apt these days, not trainer. The Continentals have taught us that "training" is the coach's job.

**Are you and Norman unique as a father-and-son combination of first-team and reserve-team trainer — and how did he come to join Chelsea?**

I don't know of another such "double act." For a time after leaving school Norman worked as a picture framer, but he was also a member of St. John, and he came here a year ago when I was needing some assistance. He's 20 now and studying to become a chartered physiotherapist with his own practice one day.

*Continued on page 15*

# FIXTURES 1963-64

## Football League Division I

© Football League Ltd., 1963-64

1963	Opponents	Venue	F.A.
Aug. 24	WEST HAM UNITED...	HOME	0 0
" 27	Burnley ... ..	Away	0 0
" 31	Sheffield United ... ..	Away	1 1
Sept. 4	BURNLEY ... ..	HOME	2 0
" 7	LIVERPOOL ... ..	HOME	1 3
" 11	BLACKBURN ROVERS	HOME	1 0
" 14	Aston Villa ... ..	Away	0 2
" 16	Blackburn Rovers ... ..	Away	2 2
" 21	TOTTENHAM H. ... ..	HOME	0 3
" 25	Swindon (League Cup— 2nd Round)	Away	0 3
" 28	Wolverhampton ... ..	Away	1 4
Oct. 2	MANCHESTER UNITED	HOME	1 1
" 5	STOKE CITY ... ..	HOME	3 3
" 12	Ipswich Town ... ..	Away	3 1
" 19	SHEFFIELD WED. ... ..	HOME	1 2
" 26	Fulham ... ..	Away	1 0
Nov. 2	BIRMINGHAM CITY...	HOME	2 3
" 9	West Bromwich Albion ...	Away	1 1
" 16	ARSENAL ... ..	HOME	3 1
" 23	Leicester City ... ..	Away	4 2
" 30	BOLTON WANDERERS	HOME	4 0
Dec. 7	Everton ... ..	Away	1 1
" 14	West Ham United ... ..	Away	2 2
" 21	SHEFFIELD UNITED...	HOME	3 2
" 26	Blackpool ... ..	Away	5 1
" 28	BLACKPOOL ... ..	HOME	1 0

1964

Jan. 4	(3) Tottenham Hotspur ...	Away	1 1
" 8	(Replay) TOT'N'HAM H.	HOME	2 0
" 11	Liverpool ... ..	Away	1 2
" 18	ASTON VILLA ... ..	HOME	1 0
" 25	(4) HUDDERSFIELD T.	HOME	.....
Feb. 1	Tottenham Hotspur ... ..	Away	.....
" 8	WOLVERHAMPTON W.	HOME	.....
" 15	(5) Stoke City ... ..	Away	.....
" 22	IPSWICH TOWN ... ..	HOME	.....
" 29	(6) Manchester United ...	Away	.....
Mar. 7	FULHAM ... ..	HOME	.....
" 14	(S.F.) Arsenal ... ..	Away	.....
" 21	WEST BROMWICH A.	HOME	.....
" 28	Birmingham City ... ..	Away	.....
" 30	NOTTINGHAM F. ... ..	HOME	.....
" 31	Nottingham Forest ... ..	Away	.....
April 4	LEICESTER CITY ... ..	HOME	.....
" 11	Bolton Wanderers ... ..	Away	.....
" 18	EVERTON ... ..	HOME	.....
" 25	Sheffield Wednesday ...	Away	.....
May 2	F.A. Cup Final ... ..	.....	.....

## Football Combination

1963	Opponents	Venue	F.A.
Aug. 27	Millwall ... ..	Away	3 1
" 31	BOURNEMOUTH ... ..	HOME	1 2
Sept. 11	Portsmouth ... ..	Away	1 1
" 14	QUEEN'S PARK R. ... ..	HOME	5 0
" 28	SOUTHEND UNITED...	HOME	1 1
" 30	ARSENAL ... .. (1962-63 Championship)	HOME	0 2
Oct. 12	READING ... ..	HOME	6 2
" 14	Fulham ... ..	Away	1 0
" 23	Southampton ... ..	Away	0 1
" 26	BRENTFORD ... ..	HOME	5 0
Nov. 2	Birmingham City...	Away	1 1
" 9	BRIGHTON & HOVE A.	HOME	2 0
" 20	Coventry City ... ..	Away	2 1
" 23	LEYTON ORIENT ... ..	HOME	5 0
Dec. 7	SOUTHAMPTON ... ..	HOME	5 0
" 14	MILLWALL ... ..	HOME	2 0
" 21	Bournemouth & Bos. Ath.	Away	0 0
1964			
Jan. 4	ALDERSHOT ... ..	HOME	2 1
" 11	PORTSMOUTH... ..	HOME	0 1
Feb. 1	SWINDON TOWN ... ..	HOME	.....
" 10	Southend United ... ..	Away	.....
" 15	FULHAM ... ..	HOME	.....
" 25	Brentford ... ..	Away	.....
" 29	BIRMINGHAM CITY...	HOME	.....
Mar. 7	Brighton & Hove Albion	Away	.....
" 14	COVENTRY CITY ... ..	HOME	.....
" 21	Leyton Orient ... ..	Away	.....
" 28	CHARLTON ATH. ... ..	HOME	.....
April 8	Reading ... ..	Away	.....
" 11	WATFORD ... ..	HOME	.....
" 18	Charlton Athletic ... ..	Away	.....
" 21	Swindon Town ... ..	Away	.....
" 25	Watford ... ..	Away	.....
Undated	Queen's Park Rangers ...	Away	.....
"	Aldershot ... ..	Away	.....

## South-East Counties League

1963	Opponents	Venue	F. A.
Aug. 24	MILLWALL ... ..	Hendon	6 2
" 31	BRIGHTON & H. A. ... ..	Hendon	9 0
Sept. 7	Watford ... ..	Away	5 0
" 14	LUTON TOWN... ..	Hendon	2 0
" 21	Luton Town ... ..	Away	2 2
Oct. 5	ARSENAL ... ..	Hendon	4 0
" 12	FULHAM ... ..	Hendon	4 1
" 19	Leyton Orient ... ..	Away	2 3
" 26	WATFORD ... ..	Hendon	4 1
Nov. 2	Fulham ... ..	Away	2 4
" 9	TOTTENHAM ... ..	Hendon	4 1
" 16	BRENTFORD ... ..	Hendon	11 0
" 23	PORTSMOUTH... ..	Hendon	7 0
" 30	West Ham United ... ..	Away	2 0
Dec. 7	Tottenham ... ..	Away	2 2
" 14	CRYSTAL PALACE ... ..	Hendon	11 0
" 28	Q.P.R. ... ..	Hendon	1 1
1964			
Jan. 4	WEST HAM ... ..	Hendon	3 0
" 18	Crystal Palace ... ..	Away	6 4
" 25	CHARLTON ... ..	Hendon	.....

## QUESTION & ANSWER

Harry Medhurst—Continued from page 13

My wife, Marjorie, and I are very pleased with his progress, especially when he passed the F.A. preliminary trainer's certificate last summer at the first attempt.

**How old are you, Harry?**

I shall be 48 on February 5.

**You watched Ken Shellito's recent cartilage operation. All part of your medical education?**

Yes, Ken's was the third operation I've attended. I feel that seeing these things from the surgeon's point of view must help me — and the player — when I am giving him treatment in the weeks that follow.

**As trainer, do you qualify for any of the bonuses the players get?**

I receive the same win and draw bonuses, but no League position bonus. That is entirely for the players.

**How varied are individual player reactions to injury?**

You get men like Frank Blunstone and Frank Upton who will have a really bad knock yet not come near the treatment room. Yet the slightest injury can get on top of another player. You may have to push him or kid him — it comes with experience. No one knows a player better, physically and mentally, than the trainer. I try to study them all, their make-up and what makes them tick.

**Which players did you admire most in your goalkeeping days?**

Tommy Lawton and Jack Rowley for their shooting (Lawton for his superb heading, too, of course) and Peter Doherty as the complete forward.

**What advice would you give to a young player just starting a career in football?**

You can never know too much about this game. Be willing to listen and learn and, if the ability is there, you'll get to the top. Cultivate good habits in hygiene, dress and deportment.

**Your own ambitions, Harry?**

Two of them: To be England team trainer . . . and to step out with Chelsea at Wembley on Cup Final day.

## FRANK BLUNSTONE TESTIMONIAL FUND

CHELSEA v. FULHAM

Saturday, 7th March, 1964

Name

Forecast

_____	1
_____	2
_____	3
_____	4
_____	5
_____	6
_____	7
_____	8
_____	9
_____	10
_____	11
_____	12

N.B. 1/- per line, 6 for 5/-. 12 for 10/-. Total Stake: I am over 21 years of age.

Name \_\_\_\_\_

Address \_\_\_\_\_

----- CUT HERE -----

Forecast (Your copy)	1	2	3	4	5	6	7	8	9	10	11	12
_____	_____	_____	_____	_____	_____	_____	_____	_____	_____	_____	_____	_____

If no correct attendance is forecast, the next best will receive first prize, and second prize will go to the second best estimate. In case of a tie, prizes will be shared.

Selections must be handed in to attendants at the Kiosks, Tote Booths as advertised and be in their possession before half-time or posted direct to the Promoter — postal orders made payable to the Frank Blunstone Testimonial Fund.

No person under 21 years of age can participate.

The correct figure is that submitted to the Football League. Winners published in following programme.

All correspondence — claims to Promoter, Mr. T. Beattie-Edwards, Chelsea Development Association, Stamford Bridge Grounds, London, S.W.6.

### FRANK BLUNSTONE TESTIMONIAL FUND

Try your skill and forecast the official attendance.

FIRST PRIZE £50

SECOND PRIZE £25

CHELSEA v. FULHAM

Saturday, 7th March, 1964

(If not played on this date later date to count).

Previous Attendances:

1959-60 — 38,687

1960-61 — 39,185

1961-62 — 37,998

# CHELSEA F.C. DEVELOPMENT ASSOCIATION

Committee:

J. H. Mears (*Chairman Chelsea F.C.*)  
 C. J. Pratt (*Vice-Chairman Chelsea F.C.*)  
 J. Battersby (*Secretary*)  
 Rex North  
 T. Beattie-Edwards (*Consultant*)

STAMFORD BRIDGE  
 FULHAM ROAD  
 LONDON, S.W.6  
 Tel. FULHAM 5546

**YOUR CHANCE TO WIN UP TO £100 HERE TODAY:  
 BUY YOUR TICKET (ONE SHILLING EACH) AND CHECK  
 TO SEE IF YOU ARE AMONG THESE PRIZES**

**LUCKY NUMBER COMPETITION LOTTERY—WEEK 3**  
 (Monday, January 20th to Saturday, January 25th)

	£25	£10	£3
Monday	15566	15648	04697
Tuesday	09607	06302	00013
Wednesday	06178	00664	14087
Thursday	15027	02072	01091
Friday	13312	16033	10502

**Saturday—Bumper Prize of £100—12723**

(Results printed daily in the "Daily Sketch" London Edition.)

**SELLERS URGENTLY WANTED**

*Apply in writing or by telephone to Tom Beattie-Edwards at the address above.*

## TODAY'S HALF-TIME SCOREBOARD

### F.A. CUP—FOURTH ROUND

A Aldershot v. Swindon .....
B Barnsley v. Bury .....
C Bedford v. Carlisle .....
D Blackburn v. Fulham .....
E Bolton v. Preston .....
F Burnley v. Newport .....
G Ipswich v. Stoke .....
H Leeds v. Everton .....
J L. Orient v. West Ham .....
K Liverpool v. Port Vale .....
L Man. Utd. v. Bristol R. ....
M Oxford Utd. v. Brentford .....

N Sheff. Utd. v. Swansea .....
O Sunderland v. Bristol C. ....
P W.B.A. v. Arsenal .....

### DIVISION I

R Tottenham v. A. Villa .....
-------------------------------

### DIVISION II

S Derby v. Scunthorpe .....
-----------------------------

### DIVISION III

T Crystal P. v. Peterboro .....
U Luton v. Colchester .....
V Reading v. Watford .....

## SEAT RESERVATIONS FOR LEAGUE MATCHES

Prices of reserved seats at home League matches are 6/-, 8/-, 10/- and 12/-. Applications (by post only) will be accepted one calendar month in advance, and should be accompanied by remittance and stamped addressed envelope. It will be appreciated if separate application is made for each match. Seats may be purchased, if still available, by personal application at the club offices in the week preceding the match.