



FULHAM FOOTBALL CLUB

official programme 6d

SEASON 1965-6 LEAGUE DIVISION ONE

CHELSEA

SATURDAY 28 AUGUST 1965 KICK OFF 3.0 PM

HERE'S A TREBLE CHANCE to pick YOUR winning line!

Kick off to a fresh start in one of these fine G.P.O. jobs:



Installation

The job: Installation of telephones, internal wiring, power units, switchboards.
Special features: Technically interesting work for the keen intelligent man.



Plumber Jointing

The job: Jointing cables (under cover in wet weather).
Special features: Open-air life, ideal for a practical man keen to learn a new skill.



Maintenance

The job: Clearing of faults on telephones and switchboards in customers' houses and business premises. Special features: Opportunity to exercise initiative and responsibility.

*5 day, 40 hour week, paying an average of £15 a week.
Age: 20 years or over. Tools, clothing and training provided.*

EXCELLENT PROMOTION PROSPECTS

For details of these and other good jobs write to:—

Telephone Manager, West Area (FH), Bromyard Avenue, ACTON, W.3.



MOTOR INSURANCE

NO CLAIM DISCOUNT UP TO 60%

Attractive Rates for Life, Endowment, Household and all General Insurances

RONALD BERNARD & CO., INSURANCE BROKERS

155, FULHAM PALACE ROAD, LONDON, W.6 - FUL 9512/7452

£1 to £2

— NEW —
or REMOULD

UNCONDITIONAL OLD - TYRE
ALLOWANCE ON ANY MAKE OF

TYRES

FREE FITTING AND BALANCING WHILE YOU WAIT

Tubed and Tubeless PUNCTURES 2/6

GUARANTEED BATTERIES AT COMPETITIVE PRICES

—FOREMOST—

TYRE SERVICES LTD.

612, KING'S ROAD, FULHAM, S.W.6

Phone: RENown 4770

HOURS: Monday to Friday 9 a.m. - 7 p.m.

Saturday 9 a.m. - 5.30 p.m.

EASY TERMS
Sunday 10 a.m. - 12.30 p.m.

FULHAM

FOOTBALL & ATHLETIC CO. LIMITED

Registered Office: Craven Cottage, Stevenage Road, Fulham, S.W.6

Directors—T. TRINDER (Chairman), N. A. D'AMATO (Vice-Chairman),
R. A. DEAN, J. G. WALSH, C. B. DEAN.

Secretary—G. I. S. HORTOP.

Manager—V. BUCKINGHAM.

Medical Officer

Dr. W. R. D. WIGGINS, M.R.C.S., D.A., R.C.P. and S. (England).

Telephone

RENOWN 5621.

Telegrams

"FULHAMISH, LONDON, S.W.6."

Voice of Fulham

THE new season has hardly got its boots laced up and here we are face-to-face with our well-to-do neighbours Chelsea. And next Saturday Tottenham play at Craven Cottage. Two London derbies in the first two weeks! Scarcely gives you time to draw breath.

But we are delighted to have them for all that. Nothing gives soccer more spice than a tussle between neighbouring clubs. And it is bound to be said that, of all our London derbies, none has more lip-smacking flavour than our twice a season get-together with our close friends and rivals from up the road.

Of course Chelsea have been pinching most of the headlines from this part of the soccer world, what with their great runs of success and untiring globe-trotting in recent years. And Fulham, we assure you, are more pleased for them than envious.

We still like to think, however, that the relative status of our two clubs is always second place on a day like today. It's them against us and you need to be a S.W. local to appreciate the true feeling and atmosphere that exists when we meet.

Because we clash so early in the season our positions in Division One can hardly be compared. But we are naturally bucked with the point gained at Blackpool in the opening game of the season last Saturday.

And no-one was more pleased than our chairman Tommy Trinder who is topping the bill at the North Pier theatre in Blackpool. Mr. Trinder was reluctantly expecting to miss the club's first game — then the fixtures came out showing Blackpool as our first match.

So he was there to greet the team on Saturday morning, saw the game and then dashed away to be ready for the start of the evening show at 6 p.m. Things could not have worked out better.

We had one or two anxious moments after Johnny Key put us into the lead. Blackpool first equalised and then took the lead with five minutes to go. Right at the death Johnny Haynes whipped in to score and thereby reward us with a point.

And manager Vic Buckingham was one of the few who missed seeing that valuable last minute swoop by Haynes.

He says "I thought we'd had it so I started to make my way into the players' tunnel. I stopped to chat to someone and looked back towards the pitch. Half the pitch was obscured by a wall but I could just see Johnny Key centering the ball. The Blackpool goal was out of sight but all of a sudden Johnny Haynes came into view leaping about with delight. Only then did I realise we'd scored."

Manager Buckingham goes on; "Although we were pleased with the point the boys and I agreed that we can play much better. The pattern is there but with only 70 per cent. efficiency. But it will come, believe me."

* * * * *

The new rule of substitution for an injured player is still a matter of high controversy in soccer. But we feel that it has come to stay and we welcome it. The total of 13 substitutes used on the first day of the season is nowhere near as high as

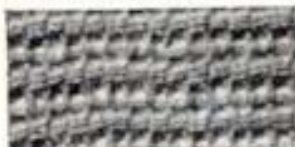
Continued overleaf

**LOOMED FROM
FINEST 100% WOOL**



This One Blanket Is All You Need All-year-round

Revolutionary improved cellular weaves warms with AIR-NOT WEIGHT



NEW MODERN-WEIGHT BLANKET WORKS BY THERMAL INSULATION.

This winter the marvellous luxury of warmth without weight can at last, truly, be yours. Thanks to a new triumph in fabric design, the THERMAL BLANKET is woven scientifically with thousands of tiny air cells, specially shaped to hold in body heat, keeping you warm as toast, yet permitting your skin to breathe naturally for relaxing, healthful comfort.

SLEEP BETTER—MORE SOUNDLY, and awaken fully refreshed without the heaviness of ordinary blankets on your body. The THERMAL BLANKET is so amazingly light you'll barely know it's there—yet its 'warmth-weight ratio' is better than ordinary blankets. You don't need anything else.

WINTER AND SUMMER. These THERMAL BLANKETS are designed for year-round use, eliminating storage problems and giving you far more value and service for your money. In cold weather, a light sheet on top closes the thousands of insulating air pockets to keep your body warmth in and the cold out! In summer, use your THERMAL BLANKET alone and the air cells let your body heat out.

DRAMATICALLY BEAUTIFUL. You can actually use your THERMAL BLANKET as a bedspread. It looks for all the world like an expensive hand-crocheted afghan, yet it's so durable that it will last for years and years.

SATISFACTION GUARANTEED OR YOU OWE NOTHING

MADE FROM 100% PURE WOOL. THERMAL BLANKETS are made from purest, downy-soft wool for perfection in luxury and durability. They are bound in $5\frac{1}{2}$ " satin ribbon, and are available in exquisite, colour-fast shades of dawn pink, sky blue, primrose yellow and moss green. They are moth-proofed and guaranteed shrink resistant, and can be washed time and time again (if washing instructions are followed) without reducing their efficiency.

DOUBLE GUARANTEE OF SATISFACTION You must be thoroughly delighted with your THERMAL BLANKET, or you can return it within 7 days and pay nothing. In addition, every THERMAL BLANKET is fully guaranteed against defective materials and workmanship for three years or it will be replaced free. Beware of inferior imitations. Insist on the original THERMAL BLANKET. **ORDER TODAY** Only a limited number of THERMAL BLANKETS are available at these low, direct-to-you prices that eliminate all middlemen and store profits. Avoid disappointment. For the ultimate bedtime luxury of perfect warmth without cumbersome weight, send the order form—**WITHOUT MONEY—off today.**

THE CORSANO COMPANY LTD., DEPT. T 20, St. Ann's Crescent, London, S.W. 18.

Please send me the following THERMAL BLANKETS for FREE trial. Insert ticks against size and colour required. If I am not thoroughly delighted, I will return them within 7 days and owe nothing. Otherwise I will remit payment at the price shown plus 4/- packing and postage charge for each blanket.

QUANTITY	TYPE	COLOUR	PRICE EACH
	Single size (70" x 90")	<input type="checkbox"/> Dawn Pink <input type="checkbox"/> Sky Blue <input type="checkbox"/> Primrose Yellow <input type="checkbox"/> Moss Green	79/6
	Double size (90" x 100")	<input type="checkbox"/> Dawn Pink <input type="checkbox"/> Sky Blue <input type="checkbox"/> Primrose Yellow <input type="checkbox"/> Moss Green	99/6

NAME _____

ADDRESS _____

NOTE: A convenient monthly payment plan available. Full details enclosed with order.

VOICE OF FULHAM *continued*

the critics expected — proof, we are sure, that the expected wholesale abuse of the law just isn't going to happen.

Football fans pay their price of admission to see two full teams play a game of football. It is in their interest that the game should not be spoilt by one side being depleted through injury.

Vic Buckingham, who has had more experience than most managers of the substitute law because of his time in Holland, agrees;

"Personally it would never enter my head to abuse this rule. Substitutes are too precious a commodity to waste, just for the sake of it. A manager should put his best side out and use his substitute only when absolutely necessary. That's the policy I shall strictly follow."

TICKETS FOR AWAY MATCHES

For the guidance and assistance of members we publish below details as to how tickets for away matches can be obtained. The information published has been supplied by the respective clubs during the close season.

Name of Club	Address	Price of Tickets	When to apply (in advance)
Arsenal	Arsenal Stadium. Highbury, London, N.5.	12/6, 15/-, 20/-	3 weeks
Aston Villa	Trinity Road, Aston, Birmingham.	***	
Blackburn Rovers	Ewood Park, Blackburn.	8/6	2 weeks
Burnley	Turf Moor, Burnley.	8/-, 10/-	3 weeks
Chelsea	Stamford Bridge Grounds, S.W.6.	7/6, 10/-, 12/6, 15/-	1 calendar month
Everton	Goodison Park, Liverpool, 4.	8/-	3 weeks
Leeds United	Elland Road, Leeds, 11.	No seats available, all season tickets.	
Leicester City	Filbert Street, Leicester.	11/- Unreserved seats also available on the day.	4 weeks
Liverpool	Anfield Road, Liverpool, 4.	8/-	2 weeks
Manchester United	Old Trafford, Manchester, 16.	8/-, 8/6, 10/-	14 days
Newcastle United	St. James' Park, Newcastle-on-Tyne, 1.	No seats available, all season tickets.	
Northampton Town	County Ground, Northampton.	10/-	2 weeks
Nottingham Forest	City Ground, Nottingham.	8/-, 9/-, 10/-	12 days
Sheffield United	Bramall Lane, Sheffield, 2.	7/6, 9/-, 10/-, 12/6	2 weeks
Sheffield Wednesday	Hillsborough, Sheffield, 6.	7/6, 10/-	3 weeks
Stoke City	Victoria Ground, Stoke-on-Trent.	8/-, 10/-	2 weeks
Sunderland	Roker Park, Sunderland.	12/-	2 weeks
Tottenham Hotspur	High Road, N.17.	10/-	3 weeks
West Bromwich Albion	The Hawthorns, West Bromwich.	7/6	8 weeks
West Ham United	Boleyn Ground, Green Street, E.13.	No advance bookings accepted, but unreserved seats available on the day.	

***Owing to alteration to Stands at Villa Park, no information available yet as to price of reserved seats.



Back row (left to right): G. COHEN, J. DEMPSEY, R. KEETCH, E. MACEDO, J. MCCLELLAND, K. MEALAND, F. CALLAGHAN,
R. ROBSON.

Middle row (left to right): J. KEY, S. BROWN, G. LEGGAT, J. HAYNES, R. MARSH, B. O'CONNELL.

Front row (left to right): M. PEARSON, T. DYSON.

(Photo by Ken Cotton)

WELCOME TO CHELSEA

UNDER the leadership of manager Tommy Docherty Chelsea always seem to be one-step ahead in the modern approach to soccer. Last season they were in the chase for the League title and the F.A. Cup right from the word go.

They finished up winning the Football League Cup, getting to the semi-final of the F.A. Cup and narrowly missing the championship in the last thrilling few weeks of the season.

In which was a most exciting season for them they also were invited to play against the German national side in Duisburg. And they didn't stop to weep over the honours that just eluded them.

As soon as the season was over they were off for a whistle-stop tour of Australia during which they played 11 matches. No sooner were they back in this country than they were off on July 27 for a breath-taking sweep around Europe playing eight matches. Their total summer mileage must have been near 50,000. That's some going.

Now the big question is can they take the First Division by storm this season. Certainly they are a mighty force to be reckoned with and we look forward with interest to having a first hand glimpse of their power this afternoon.

PETER BONETTI (goalkeeper): Signed professional in April 1959. Made League debut versus Manchester City in April 1960 and has been a regular first choice since. Has 12 England Under-23 caps and has made 190 League, ten F.A. Cup and ten Football League Cup appearances. Born Putney of Swiss parents and now lives at Sompting, near Worthing and is 23.

EDDIE MCCREADIE (left back): Made tremendous progress last season when he gained his first full cap for Scotland against England at Wembley last April with further appearances versus Spain, Poland and Finland. Joined Chelsea from East Stirling in 1962 has now made 101 League (two goals), seven F.A. Cup and six Football League (one goal) appearances. Born Glasgow and is 25.

KEN SHELLITO (right back): Born East Ham. Signed professional in April 1957 and has now made 98 League (two goals), four F.A. Cup and one Football League Cup appearances. In the past two seasons has been limited to only 31 games owing to two cartilage operations. has one full England and one Under-23 cap.

JOHN BOYLE (wing half): 1965 proved a memorable season for John who signed professional forms in August 1964. Made his first team debut in the first leg of the League Cup Semi-Final versus Aston Villa at Villa Park in January and scored the winning goal. Last season made six League, two F.A. Cup and four Football League Cup appearances and gained a Scottish Youth cap. Born Motherwell and is 18.

RON HARRIS (left half): After joining the Club in 1960 signed professional in November 1961. Captained England's Youth team that won International Youth Tournament at Wembley in April 1963 and afterwards clinched a first team place in Chelsea's promotion side in Season 1962-63. Born Hackney and is 20.

JOHN HOLLINS (right half): Signed professional in July 1963. Established himself as a regular first team man last Season when he made 41 appearances (two goals), five F.A. Cup (one goal) and six Football League Cup

games. Is 19 and was born at Guildford.

MARVIN HINTON (centre half): Costliest player in the side, Marvin joined Chelsea in August 1963 from Charlton Athletic where he gained three Under-23 caps. Whilst with Charlton made 129 League appearances and has now made 61 League (two goals), eight F.A. Cup and six Football League Cup appearances for Chelsea. Born Croydon and is now 25.

BARRY BRIDGES (centre forward): Born Horsford, near Norwich in April 1941, Barry signed professional for Chelsea in May 1958. Gained many England Youth caps and won his first full cap against Scotland at Wembley in April. Has now made 147 League (71 goals), 11 F.A. Cup (seven goals) and five Football League Cup (three goals) appearances.

GEORGE GRAHAM (inside right): After spending four years at Aston Villa George joined Chelsea in June 1964. Was a Scottish Youth cap when he joined them and this was followed by two Under-23 caps last season against Wales and England. Appearances: 30 League (17 goals), five F.A. Cup and seven Football League Cup (four goals). 20 years old.

BERT MURRAY (outside right): Signed professional in May 1961. In successive seasons Bert has set up a post-war scoring record for a Chelsea winger, 12 goals in Season 1963-64 and 17 last season. Gained his first England Under-23 cap against Roumania last December. Born Shoreditch and is 23 next month.

BOB TAMBLING (outside left): Born Storrington, Sussex and joined Chelsea straight from school and signed professional in 1958. Holds two full England caps (Wales and France) and twelve Under-23 caps. Successfully switched from inside right to outside left last season.

TERRY VENABLES (inside left): After playing for England at Schoolboy, Youth and Amateur and Under-23 level, Terry gained his first full cap versus Belgium at Wembley last November and another versus Holland later that year. Was successfully switched from wing half to inside left two seasons ago and was appointed Club Captain in succession to Ken Shellito when he was injured.

MACAULAY BATTERIES

Show you a saving of at least
50%

From MACAULAY to MOTORIST means that you buy a **FULLY GUARANTEED BATTERY** at **FACTORS' PRICES.**

For example: 6 volt from £3. 3. 6
12 volt from £5. 2. 0

Every type ready charged in stock.
FREE DELIVERY and **FITTING**
IN ALL AREAS.

Call or telephone:

MACAULAY BATTERIES LTD.

25/27 MALLINSON ROAD,
CLAPHAM JUNCTION, S.W.11
Phone: BATtersea 9242/3

Also at:

2 Battersea Rise, 25 Spring Lane,
Clapham Junction, Woodside,
S.W.11 S.E.25
Phone: Phone:
BATtersea 4566 ADDiscombe 7655

TOP TAILORING

FOR THE

SMARTER MAN!

DAVE WAX

160 HAMMERSMITH ROAD
W.6

(LATYMER COURT)

RIVerside 5796

OPEN ALL DAY SATURDAY

OUR GOAL—YOUR SATISFACTION

AND AT

82 UPPER STREET,
LONDON, N.1

CANonbury 4994

"METTOY WEMBLEY

ARE IDEAL FOR TRAINING
says John

THEY ARE RE-INFLATABLE, REPAIR
CONDITIONS AND TREATMENT, AND



Wembley Official
Wembley Regulation (Correct)

SEE THE VAST RANGE OF **METTOY**

FULL

White Shirts, Black Shorts.

R

Tony M

2
George Cohen

4
Stan Brown

5
Bobby

8
Brian O'Connell

7
Johnny Key

9
Rodney

Referee—

Mr. J. K. TAYLOR
(Wolverhampton)



11
Bobby Tambling

12
Barry

10
Terry Venables

6
Ron Harris

13
Marvin

3
Eddie McCreadie

14
Peter

L

CHE

Royal Blue Shirts (White Facings), Royal B

Patrons will be advised of an

If it's
WINNERS
you're after

GRE EXP

IS THE

★ READ BY CLEVER BACKERS OF DOGS,

ALL ENQUIRIES FOR ADVERTISING in this Programme to STILWELL DARBY & CO., LT

VINYL FOOTBALLS

FOR AND PRACTICE GAMES"
Johnny Haynes

ABLE, TOUGH AND WILL STAND UP TO ANY
 OF COURSE ARE IDEAL FOR YOUNGSTERS

size in poly bag 6/6.
 Football Weight) 10/6; in tan or white.

PLAYBALLS AT YOUR SPORTS SHOP NOW



*Enjoy Big Dividends
 every day-
 the RIZLA way!*



GET A **RIZLA OUTFIT**

FROM YOUR TOBACCONIST TODAY

ONLY
9^{1d}/₂

I AM

Sub : **Fred Callaghan**

lacedo

³
Barry Mealand

keetch

⁶
Bobby Robson

¹⁰
Johnny Haynes

Marsh

¹¹
Terry Dyson

Linesmen—

Mr. D. A. WATKINS
 (Red Flag)

Mr. G. SQUIRES
 (Yellow Flag)

Bridges

⁷
Bert Murray

⁸
George Graham

Hinton

⁴
John Hollins

²
Ken Shellito

Donetti

R

SEA

ue Shorts.

Sub : **John Boyle**

change in the above teams.

YHOUND PRESS

PAPER TO BUY!

HORSES AND FIXED ODDS ★

9^{D.}
 DAILY

ALL NEWSAGENTS

The Nearest Houses
 for

YOUNG & CO'S
 SPECIAL PRIZE BEER

THE CASTLE
 (with First Class Restaurant)

PUTNEY BRIDGE ROAD

THE DUKES HEAD
PARSONS GREEN

D., 24, Old Burlington Street, London, W.1.

'Phone : REGent 8671 (5 lines)

FIXTURES 1965-66

DIVISION 1

Date	Opponents	Ground	Result
1965			
Aug. 21	Blackpool	Away	2-2
" 25	BLACKBURN	Home	5-2
" 28	CHELSEA	Home
Sept. 1	Blackburn R.	Away
" 4	TOTTENHAM ...	Home
" 8	SHEFFIELD U. ..	Home
" 11	Liverpool	Away
" 15	Sheffield United.	Away
" 18	ASTON VILLA ..	Home
" 25	Sunderland	Away
Oct. 2	WEST HAM U. ..	Home
" 9	Arsenal	Away
" 16	EVERTON	Home
" 23	Manchester U.	Away
" 30	NEWCASTLE U. ..	Home
Nov. 6	West Brom. A.	Away
" 13	(1) NOTTM. F. ..	Home
" 20	Sheffield Wed.	Away
" 27	NORTHAMPT'N ..	Home
Dec. 4	(2) Stoke City ...	Away
" 11	BURNLEY	Home
" 18	Everton	Away
" 27	LEICESTER C. ..	Home
" 28	Leicester City ...	Away
1966			
Jan. 1	ARSENAL	Home
" 8	Burnley	Away
" 15	MAN. UNITED ..	Home
" 22	(3)
" 29	BLACKPOOL	Home
Feb. 5	Chelsea	Away
" 12	(4)
" 19	Tottenham H. ...	Away
" 26	LIVERPOOL	Home
Mar. 5	(5)
" 12	Aston Villa	Away
" 19	SUNDERLAND ..	Home
" 26	(6) W. Ham U.	Away
Apr. 2	W. BROM. A.	Home
" 8	LEEDS UNITED ..	Home
" 9	Nottingham F. ...	Away
" 12	Leeds United ...	Away
" 16	SHEFFIELD W. ..	Home
" 23	(S.F.) North'ton	Away
" 30	STOKE CITY ...	Home
May 7	Newcastle U. ...	Away
" 14	(FINAL)

FOOTBALL LEAGUE — DIVISION I

Final Table Season 1964-65

	P	W	L	D	F	A	Pts
Manchester United ...	42	26	7	9	89	39	61
Leeds United	42	26	7	9	83	52	61
Chelsea	42	24	10	8	89	54	56
Everton	42	17	10	15	69	60	49
Nottingham Forest ..	42	17	12	13	71	67	47
Tottenham Hotspur .	42	19	16	7	87	71	45
Liverpool	42	17	15	10	67	73	44
Sheffield Wednesday	42	16	15	11	57	55	43
West Ham United ...	42	19	19	4	82	71	42
Blackburn Rovers ...	42	16	16	10	83	79	42
Stoke City	42	16	16	10	67	66	42
Burnley	42	16	16	10	70	70	42
Arsenal	42	17	18	7	69	75	41
West Bromwich A. ..	42	13	16	13	70	65	39
Sunderland	42	14	19	9	64	74	37
Aston Villa	42	16	21	5	57	82	36
Blackpool	42	12	19	11	67	78	35
Leicester City	42	11	18	13	69	85	35
Sheffield United	42	12	19	11	50	64	35
FULHAM	42	11	19	12	60	78	34
Wolverhampton W. ..	42	13	25	4	59	80	30
Birmingham City	42	8	23	11	64	96	27

FOOTBALL COMBINATION

DIVISION 1

Date	Opponents	Ground	Result
1963			
Aug. 21	PETERBORO'	Home	0-2
" 28	Chelsea	Away	
Sept. 1	Southampton	Away	
" 11	TOTTENHAM	Home	
" 18	Norwich City	Away	
" 25	WEST HAM U.	Home	
" 28	Coventry City	Away	
Oct. 9	NORTHAMPT'N	Home	
" 16	Plymouth Argyle	Away	
" 23	CRYSTAL PAL.	Home	
" 30	Nottingham F.	Away	
Nov. 6	SHREWSBURY	Home	
" 13	Ipswich Town	Away	
" 20	SWINDON T.	Home	
" 27	Arsenal	Away	
Dec. 4	PLYMOUTH A.	Home	
" 11	Northampton T.	Away	
" 18	NOTTM. F.	Home	

8

Jan. 8	IPSWICH T. ...	Home
" 15	Shrewsbury T. ...	Away
" 29	Peterborough U. ...	Away
Feb. 5	CHELSEA	Home
" 12	Leicester City ...	Away
" 19	SOUTHAMPTON	Home
" 26	Tottenham H. ...	Away
Mar. 5	LEICESTER C.	Home
" 12	NORWICH C.	Home
" 19	West Ham Utd. ...	Away
" 26	COVENTRY C.	Home
" 29	Swindon Town ...	Away
Apr. 9	ARSENAL	Home
" 23	CARDIFF CITY	Home
May 4	Cardiff City ...	Away

© Football League Ltd., 1965/66

FOOTBALL COMBINATION — DIVISION I

Final Table Season 1964-65

	P	W	D	L	F	A	Pts
Chelsea	34	24	5	5	100	32	53
Tottenham Hotspur ..	34	21	6	7	96	42	48
West Ham United ...	34	21	4	9	82	47	46
Peterborough United	34	19	4	11	82	62	42
Nottingham Forest ..	34	17	6	11	66	53	40
Arsenal	34	17	5	12	73	54	39
Northampton Town ..	34	14	7	13	68	67	35
Cardiff City	34	12	8	14	60	66	32
FULHAM	34	14	4	16	53	62	32
Crystal Palace	34	14	3	17	57	57	31
Portsmouth	34	13	5	16	67	74	31
Plymouth Argyle	34	12	6	16	49	58	30
Norwich City	34	12	6	16	43	55	30
Shrewsbury Town	34	11	6	17	68	90	28
Leicester City	34	11	5	18	60	73	27
Ipswich Town	34	10	7	17	48	79	27
Mansfield Town	34	9	7	18	64	80	25
Colchester United	34	5	6	23	43	119	16



PYE RECORDS
PRESENTING HERE
AND IN YOUR HOME

A WORLD OF ENTERTAINMENT

SOUTH EAST COUNTIES LEAGUE

Date	Opponents	Ground	Result
Aug. 21	Chelsea	Away	1-5
„ 28	Arsenal	Away	
Sept. 4	Crystal Palace	Away	
„ 11	Millwall	Away	
„ 18	LUTON TOWN	Home	
„ 25	1st Rnd L Cup	Away	
Oct. 2	Q.P.R.	Home	
„ 9	Charlton A.	Away	
„ 16	BEXLEY U.	Home	
„ 23	Brighton	Away	

SOUTH EAST COUNTIES LEAGUE

Final Table Season 1964-65

	P	W	D	L	F	A	Pts
Arsenal	30	22	7	1	94	23	51
Queen's Park Rangers	30	21	2	7	94	40	44
Chelsea	30	20	3	7	107	51	43
FULHAM	30	20	2	8	79	43	42
Tottenham Hotspur	30	17	4	9	114	55	38
West Ham United	30	16	6	8	72	42	38
Portsmouth	30	16	3	11	85	57	35
Brighton	30	14	3	13	60	82	31
Millwall	30	13	2	15	74	63	28
Leyton Orient	30	10	5	15	54	83	25
Charlton Athletic	30	11	1	18	69	89	23
Crystal Palace	30	10	3	17	59	81	23
Watford	30	8	4	18	53	78	20
Bexley United	30	8	2	20	54	137	18
Brentford	30	4	3	23	44	96	11
Luton Town	30	4	2	24	50	142	10

FUTURE GAMES

FOOTBALL LEAGUE

TOTTENHAM HOTSPUR

Saturday, 4th September

Kick-Off 3 p.m.

FOOTBALL COMBINATION

TOTTENHAM HOTSPUR

Saturday, 11th September

Kick-Off 3 p.m.

FOOTBALL LEAGUE

SHEFFIELD UNITED

Wednesday, 8th September

Kick-Off 7.30 p.m.

FOOTBALL LEAGUE

ASTON VILLA

Saturday, 18th September

Kick-Off 3 p.m.

So many
people are saying
Martini



Sweet, Dry or Bianco

**FULHAM
FLASHES**

JOHNNY THE KICK



★ **JOHNNY KEY**, half hidden by a Blackpool defender, kicks home our first goal with a shot at full speed that gives goalkeeper Tony Waiters no chance at all. Skipper Johnny Haynes had laid on the goal with a typically well-measured pass. This goal put us one up in the 51st minute, but Blackpool hit back to take the lead five minutes from time.

(Photo by Ken Coton)

**FULHAM
FLASHES**

JOHNNY THE FLICK



JOHNNY HAYNES scores our dramatic last minute equaliser with as cute a flick as you've ever seen. Johnny Key repaid his skipper's help in the goal by crossing the ball fast and low. Haynes cleverly pushed his left foot forward, brought his right foot around the back and flicked the ball between Waiters and the near post. It is sure a cool way to score such a vital goal.

(Photo by Ken Coton)

F. AMBRIDGE

Linoleum, Floorcloth and Carpet Warehouse

351, NORTH END ROAD, FULHAM, S.W.6

Telephone : FULham 3078

SUPPORTER'S NOTES

LAST Saturday a party of supporters made the long trip to Blackpool by coach for the opening game of the season and we hope they all had an enjoyable time. We would like more of you to take advantage of our coach excursions to away matches this season and provide the team with some much needed support in foreign parts. The next excursion is on September 11th when we go to Liverpool. The fare is 26/- return and the coach leaves from Colehill Lane—Fulham Palace Road at 7.30 a.m. You may book today at the Supporters' Club kiosks or at the headquarters at "The Golden Lion", Fulham High Street, any Monday evening from 8 p.m. Train details are: Depart Euston 8.35 a.m., arrive Liverpool 12.33 p.m.; depart Liverpool (Lime Street) 17.30, arrive Euston 21.05; or depart Liverpool 17.45, arrive Euston 21.47 with a change at Crewe. The fare is 44/6d., Juniors 22/3d.

The Club newsletter is now available and can be obtained at the kiosks, etc. This is free to all members so if you have not joined yet do so now. Adults' membership is 2/6 and Juniors under 14 1/6.

The new photograph of the team is on sale at 2/6 and also new postcard sizes of individual players at 1/- each. These and all items listed below can be bought today.

Our congratulations to Stewart Christie and David Bell of the Fulham & District referees society who have been elected to the Football League linesman's list this season. Stewart is a very good contributor to our sports quiz evenings.

Finally don't forget our amateur cine and slide show on Monday, September 27th. Bring along any of your films or slides and give a short commentary with them. Our last show of this kind was an eye opener.

JACKPOT RESULTS—Saturday, 21st August, 1965

1st :	A00220.	£3 0 0.	Mrs. A. Walbanke, S.W.6.
2nd :	A00469.	£1 16 0.	Not claimed.
3rd :	A00412.	£1 4 0.	L. Bringlow, Bedford.

JACKPOT RESULTS—Wednesday, 25th August, 1965

1st :	A10501.	£45 0 0.	S. Woodman, S.W.11.
2nd :	A10332.	£27 0 0.	L. Chesswas, Uxbridge.
3rd :	A14275.	£18 0 0.	E. Green, Teddington.
4th :	A11516.	Two Free Stand Tickets for next home League match. R. Adams, West Molesey.	

ADVANCE BOOKINGS FOR STAND SEATS

WE should like to remind supporters that advance bookings for each home fixture are accepted one calendar month prior to the game. Prices are : 12s. 6d., 10s. 6d. 8s. and 7s.

During this period, applications must be received through the post with the appropriate remittances. A stamped, addressed envelope should be included.

Also, advance bookings can be made in person at the ticket office from 9.30 a.m.—5 p.m. Monday to Friday; and 9.30 a.m.—12 noon, Saturday.

GUINNESS

IS GOOD

FOR YOU



WELL MADE • WELL PACKED

HIGH BLOOD PRESSURE

Take Rutin, the proved natural remedy, in Rutin- 'T' or Rutivite Tablets.
9/8 from all good Health Stores and Chemists, or in case of difficulty,
post free from

RUTIN PRODUCTS LTD. Wokingham, Berks.

RED

AMBER

GREEN

WHITE

PINK

HALF-TIME SCOREBOARD

PINK	A Aston Villa	B Burnley	C Northampton
	D Leicester C.	E Arsenal	F Man. Utd.
WHITE	A West Ham	B Bury	C Charlton A.
	D Leeds United	E Derby Co.	F Ipswich T.
GREEN	A Norwich C.	B Plymouth A.	C Preston N.E.
	D Cardiff City	E Bolton W.	F Birmingham
AMBER	A Rotherham	B Southampton	C Wolves
	D Coventry C.	E Portsmouth	F Carlisle Utd.
RED	A Brighton	B Bristol R.	C Gillingham
	D Hull City	E Brentford	F Millwall
	A Oldham Ath.	B Oxford Utd.	C Q.P.R.
	D Peterborough	E Shrewsbury	F Mansfield T.
	A Stoke City	B Scunthorpe	C Swansea T.
	D Everton	E Reading	F Swindon T.
	A Barnsley	B Darlington	C Wrexham
	D Bradford C.	E Chester	F Hartlepool

ALL ENQUIRIES FOR ADVERTISING

IN THIS PROGRAMME

TO

STILWELL DARBY & CO. LIMITED

24. OLD BURLINGTON ST.,
LONDON, W.1.

Phone : REGENT 8671 (5 lines)

*Charm and
Confidence
naturally with*

STEPHANIE BOWMAN

Every woman wants to be beautiful, to wear chic clothes, to move with grace and confidence, to be admired.

Stephanie Bowman exercise garments are designed with you in mind. They are safe, simple, comfortable. Thousands upon thousands of women have taken this first step to charm and confidence.

We will be pleased to send our illustrated Brochure without obligation, on receipt of the coupon below


☐

Tick here for Men's Plan

Name

Address

To: Stephanie Bowman (Sales) Ltd.,
Dept., FF 39, 1, Marldox Street, W.1.